

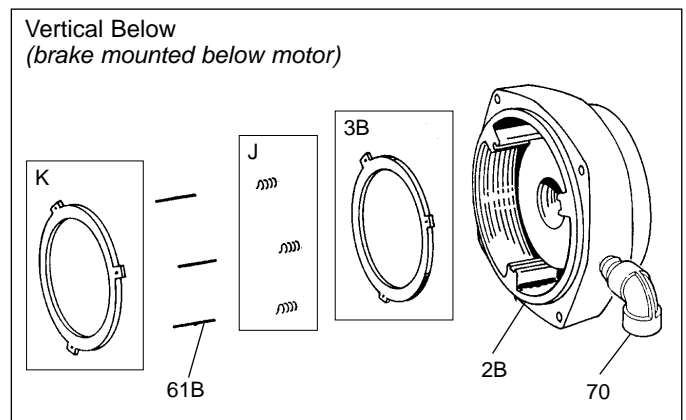
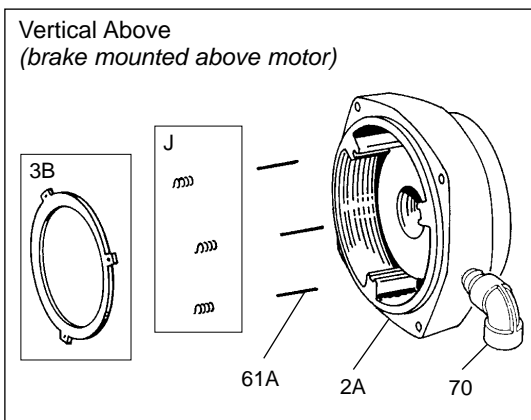
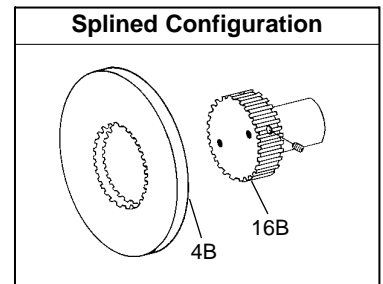
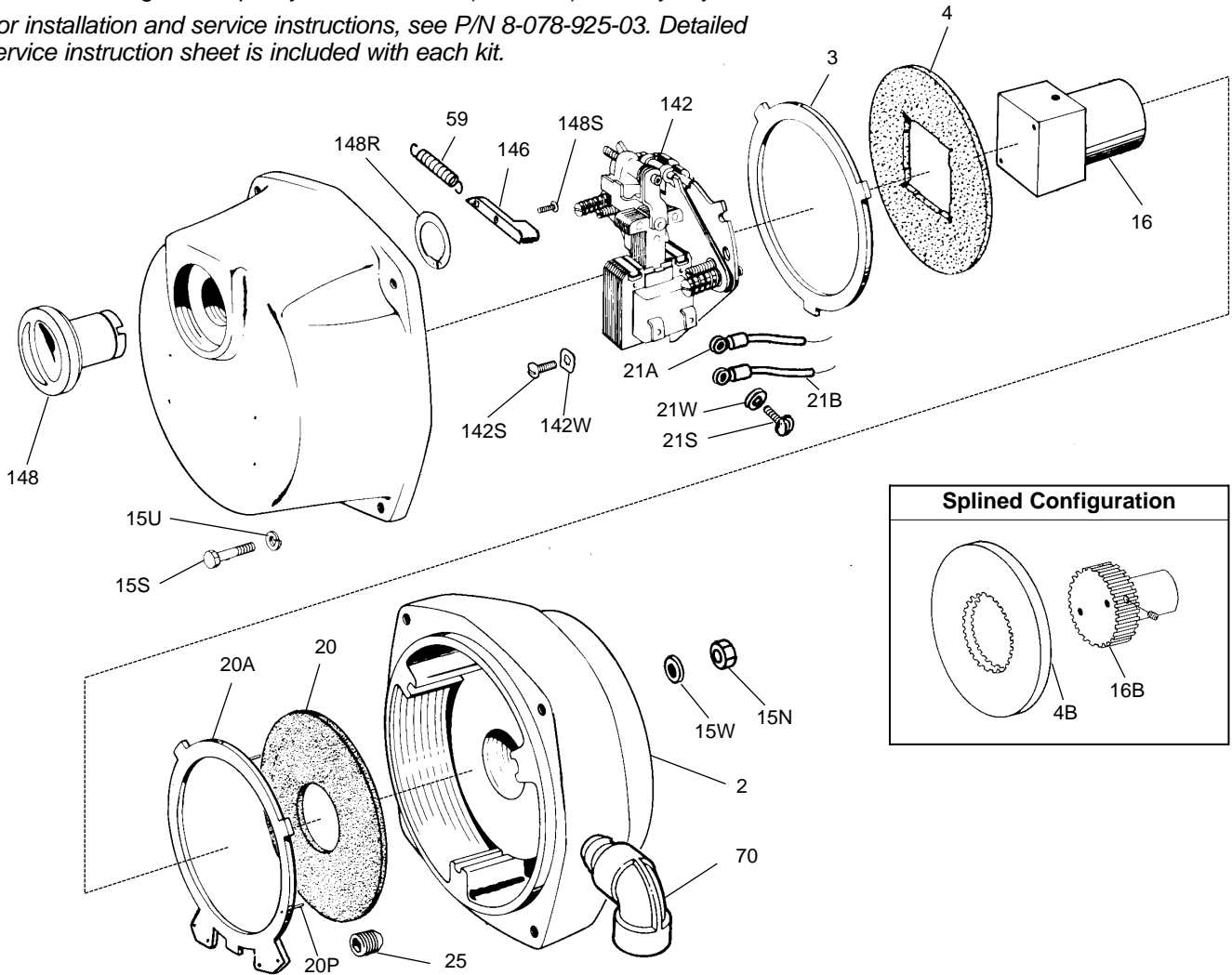
## Parts List for 65,300 Series Brakes

### Information required when ordering replacement parts:

When ordering brake parts, give part number of parts or kits needed, brake model number, and brake serial number. The brake model and serial number may identify special brakes not covered by this parts list.

When ordering hubs, specify shaft diameter (hub bore) and keyway.

For installation and service instructions, see P/N 8-078-925-03. Detailed service instruction sheet is included with each kit.

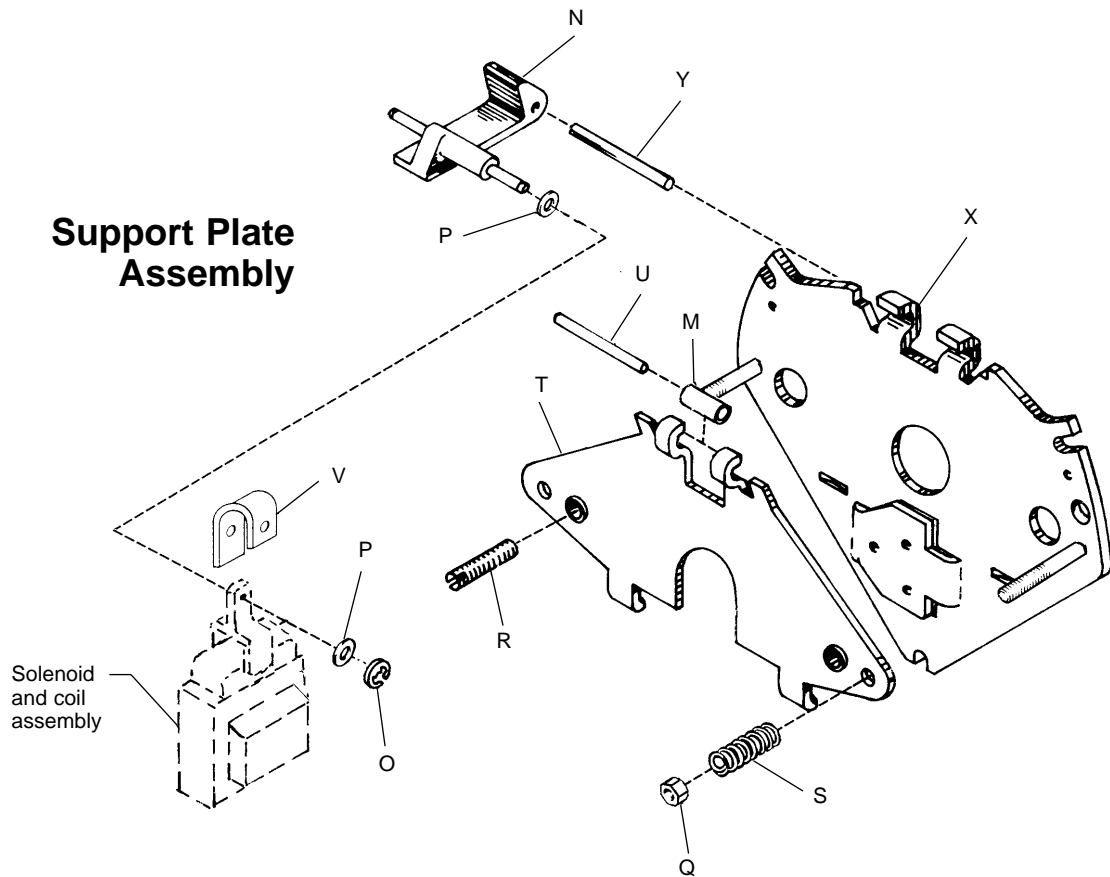


**TABLE 1**  
Components of 65,300 Series Brakes

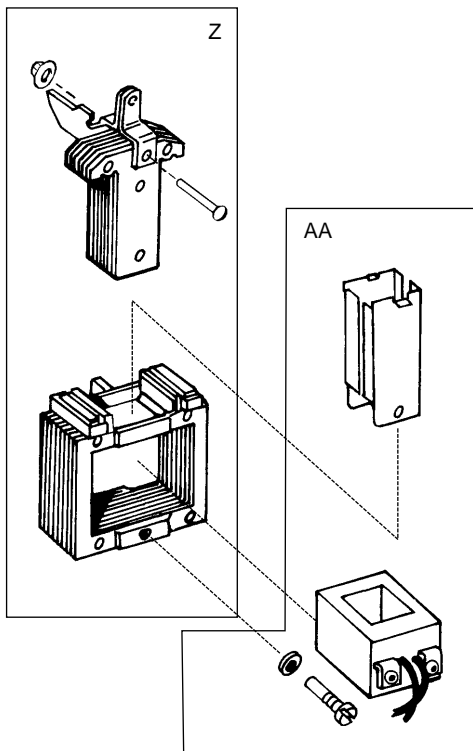
Item No. or Kit No.	Description	Part Number ↓	Cast Iron Enclosure					Aluminum Enclosure														
			Torque (lb-ft)	1.5	3	6	10	15	1.5	3	6	10	15									
			Brake Model Number →	1-065-311-05	1-065-321-05	1-065-331-05	1-065-351-05	1-065-361-05	1-065-311-06	1-065-321-06	1-065-331-06	1-065-351-06	1-065-361-06									
2*	Housing and endplate assembly Housing and endplate assembly Housing and endplate assembly	5-72-5501-00 5-72-5502-00 5-72-5503-00	1	1	1	1	1															
	Housing and endplate assembly Housing and endplate assembly Housing and endplate assembly	5-72-5504-00 5-72-5505-00 5-72-5506-00						1	1		1	1	1									
3	Stationary disc kit	5-66-8351-00	1	1	2	3	3	1	1	2	3	3	3									
4	Friction disc	5-66-8452-00	1	1	2	3	3	1	1	2	3	3	3									
4B	Friction disc kit splined	5-66-8458-00	1	1	2	3	3	1	1	2	3	3	3									
15S	Cap screw hex head 3/8 - 16 × 2 grade 5	9-16-3232-00	4	4	4	4	4	4	4	4	4	4	4									
15U	Flat washer plain 3/8	9-45-0132-00	4	4	4	4	4	4	4	4	4	4	4									
15W	Lock washer, spring 3/8 med.	9-45-0332-00	4	4	4	4	4	4	4	4	4	4	4									
15N	Nut, hex, reg. 3/8 - 16	9-40-0232-00	4	4	4	4	4	4	4	4	4	4	4									
16	Hub and set screw assembly (1-disc brake) Hub and set screw assembly (2-disc brake) Hub and set screw assembly (3-disc brake)	5-16-5008-00 5-16-5009-00 5-16-5010-00	1	1	1	1	1	1	1		1	1	1									
16B	Splined hub and set screw assembly (1-disc brake) Splined hub and set screw assembly (2-disc brake) Splined hub and set screw assembly (3 disc brake)	5-16-5138-00 5-16-5139-00 5-16-5140-00	1	1	1	1	1	1	1		1	1	1									
20	Heat barrier	8-020-501-01	1	1	1	1	1	1	1	1	1	1	1									
20A	Insulator disc	8-003-504-01	1	1	1	1	1	1	1	1	1	1	1									
20P	Spirol pin 3/32 dia. × 5/8 flared head, stainless steel	9-32-2003-00	3	3	3	3	3	3	3	3	3	3	3									
21A	Thermostat and lead wire (red leads)	5-57-5001-00	1	1	1	1	1	1	1	1	1	1	1									
21B	Thermostat and lead wire (yellow leads)	5-57-5002-00	1	1	1	1	1	1	1	1	1	1	1									
21S	Machine screw, round head #5 - 40 × 1/4	9-10-2504-00	4	4	4	4	4	4	4	4	4	4	4									
21W	Lock washer, spring #5 med.	9-45-0325-00	4	4	4	4	4	4	4	4	4	4	4									
25	Set screw 3/4 - 16 × 3/4	9-23-0023-00	4	4	4	4	4	4	4	4	4	4	4									
59	Release spring	9-71-0005-00	1	1	1	1	1	1	1	1	1	1	1									
70	Elbow	9-33-3004-00	1	1	1	1	1	1	1	1	1	1	1									
142	Support plate assembly (see Table 2)	5-42-5007-00-04	1	1	1	1	1	1	1	1	1	1	1									
142S	Machine screw, filister head #10 - 24 × 1/2	9-12-2808-00	3	3	3	3	3															
142W	Lock washer, star int. teeth #10	9-45-0528-00	3	3	3	3	3															
142S	Thread rolling screw #10 - 24 × 1/2 Rolok	9-25-7331-00						3	3	3	3	3	3									
146	Release arm	8-146-501-01	1	1	1	1	1	1	1	1	1	1	1									
148	Release knob	8-148-504-01	1	1	1	1	1	1	1	1	1	1	1									
148R	Retaining ring Truarc #5108-100-ZD	9-03-0001-00	1	1	1	1	1	1	1	1	1	1	1									
148S	Machine screw, bind head #8 - 32 × 1/2	9-13-3058-00	1	1	1	1	1	1	1	1	1	1	1									
<b>Vertical Above Modifications</b>																						
2A**	Housing and endplate assembly Housing and endplate assembly Housing and endplate assembly Housing and endplate assembly	5-72-5512-00 5-72-5513-00 5-72-5515-00 5-72-5516-00	No modifi- cation req.					1	1				1	1	1							
3B	Stationary disc kit	5-66-8352-00						2	3	3	No modifi- cation req.					2	3	3				
20A	Insulator disc	8-003-504-03						1	1	1						1	1	1	1	1	1	1
61A	Vertical mounting pin Vertical mounting pin	9-32-4062-00 9-32-4071-00						3								3	3			3	3	3
J	Vertical mounting spring kit (blue) Vertical mounting spring kit (white) Vertical mounting spring kit (red)	5-66-3151-00 5-66-3152-00 5-66-3153-00	1	1	1	1	1	1	1	1						1	1	1				
<b>Vertical Below Modifications</b>																						
2B*	Housing and endplate assembly Housing and endplate assembly Housing and endplate assembly Housing and endplate assembly	5-72-5522-00 5-72-5523-00 5-72-5525-00 5-72-5526-00	No modifi- cation req.					1	1	1			1	1	1							
K	Pressure plate kit	5-66-8553-00						1	1	1	No modifi- cation req.					1	1	1				
3B	Stationary disc kit	5-66-8352-00						1	2	2						1	1	1	1	1	1	1
20A	Insulator disc	8-003-504-02						1	1	1						3	3			3	3	3
61B	Vertical mounting pin Vertical mounting pin	9-32-4070-00 9-32-4062-00				3	3									3	3					
J	Vertical mounting spring kit (blue) Vertical mounting spring kit (white)	5-66-3151-00 5-66-3152-00	1	1	1	1	1			1	1	1	1									

\* Includes 15S, 15U, 15W, 15N, 20 20A, 20P, 21A, 21B, 21S, 21W, 25, 59, 70, 146, 148, 148R, 142S

\*\* Includes 15S, 15U, 15W, 15N, 20, 20A, 20P, 21A, 21B, 21S, 21W, 25, 59, 61A, 70, 146, 148, 148R, 148S



### Solenoid and Coil



**TABLE 2**  
*Components of Support Plate Assembly*  
*(less coil) 5-42-5007-00-04*

Item	Description	Part Number	Number Required
M	Bearing	8-006-501-00	1
N	Solenoid lever	8-008-504-01	1
O	Retaining ring	9-03-0057-00	1
P	Spacer	9-45-0168-00	2
Q	Torque adjustment nut	9-40-3928-00	2
R	Wear adjustment screw	8-100-501-00	2
S	Pressure spring	9-70-1302-00	2
T	Lever arm and stop nut assembly	5-17-5002-00	1
U	Bearing pin	9-29-4826-00	1
V	Plunger stop	8-094-504-00	2
X	Support plate and stop nut assembly	5-26-5017-00	1
Y	Pivot pin	9-29-4836-00	1
Z	Solenoid assembly	5-12-5543-00	1

**TABLE 3**

Item	Description	Part Number	Number Required	
AA	No. 4 coil assembly 60 Hz	230/460 Vac	5-96-6409-05	1
		115 Vac	5-96-6401-05	1
		230 Vac	5-96-6402-05	1
		460 Vac	5-96-6404-05	1
		575 Vac	5-96-6405-05	1

Above coils are UL listed as Class A, however, they contain Class H insulation.

**TABLE 4**  
*Replacement*

Torque (lb-ft)	Current Model Number	Obsolete Model Numbers
1.5	1-065-311-05	UH-52 or UHC-52
3	1-065-321-05	UH-52A or UHC-52A
6	1-065-331-05	UH-54 or UHC-54
10	1-065-351-05	UH-56A or UHC-56A
15	1-065-361-05	UH-56B or UHC-56B
1.5	1-065-311-06	UHB-52 or UHCB-52
3	1-065-321-06	UHB-52A or UHCB-52A
6	1-065-331-06	UHB-54 or UHCB-54
10	1-065-351-06	UHB-56A or UHCB-56A
15	1-065-361-06	UHB-56B or UHCB-56B

**TABLE 5**  
*Contents of Kits and Assemblies*  
*(contents may vary)*

Letter Designation	Kit Description
3	Stationary disc kit (5-66-8351-00) 1 - Stationary disc
3B	Stationary disc kit - vertical mounting (5-66-8352-00) 1 - Stationary disc for vertical above or below mounting
J	Vertical mounting spring kit - blue (5-66-3151-00) 3 - Vertical mounting springs - blue
	Vertical mounting spring kit - white (5-66-3152-00) 3 - Vertical mounting springs - white
	Vertical mounting spring kit - red (5-66-3153-00) 3 - Vertical mounting springs - red
K	Pressure plate kit - vertical mounting (5-66-8553-00) 1 - Pressure plate - vertical below
Z	No. 4 AC solenoid assembly (5-12-5543-00) 1 - Plunger 1 - Solenoid link 1 - Frame 1 - Solenoid link cap screw 1 - Solenoid link nut 3 - Solenoid mounting screws
AA	#4 coil assembly (5-96-64XX-05) 1 - Coil 2 - Plunger guides 1 - Plunger guide screw 1 - Plunger guide lock washer



Rexnord Industries, Inc.  
 Stearns Division  
 5150 S. International Dr.,  
 Cudahy, Wisconsin 53110  
 (414) 272-1100 Fax: (414) 277-4364 [www.rexnord.com](http://www.rexnord.com)