

Parts List for 65,000 Series Brakes

Information required when ordering replacement parts:

- When ordering brake parts, give part number of parts or kits needed, brake model number and brake serial number. The brake model and serial number may identify special brakes not covered by this parts list.
- Give part number of parts or kits needed.
- When ordering hubs, specify shaft diameter (hub bore) and keyway.
- Cast iron enclosure.

For installation and service instructions, see P/N 8-078-925-03. Detailed service instruction sheet is included with each kit.

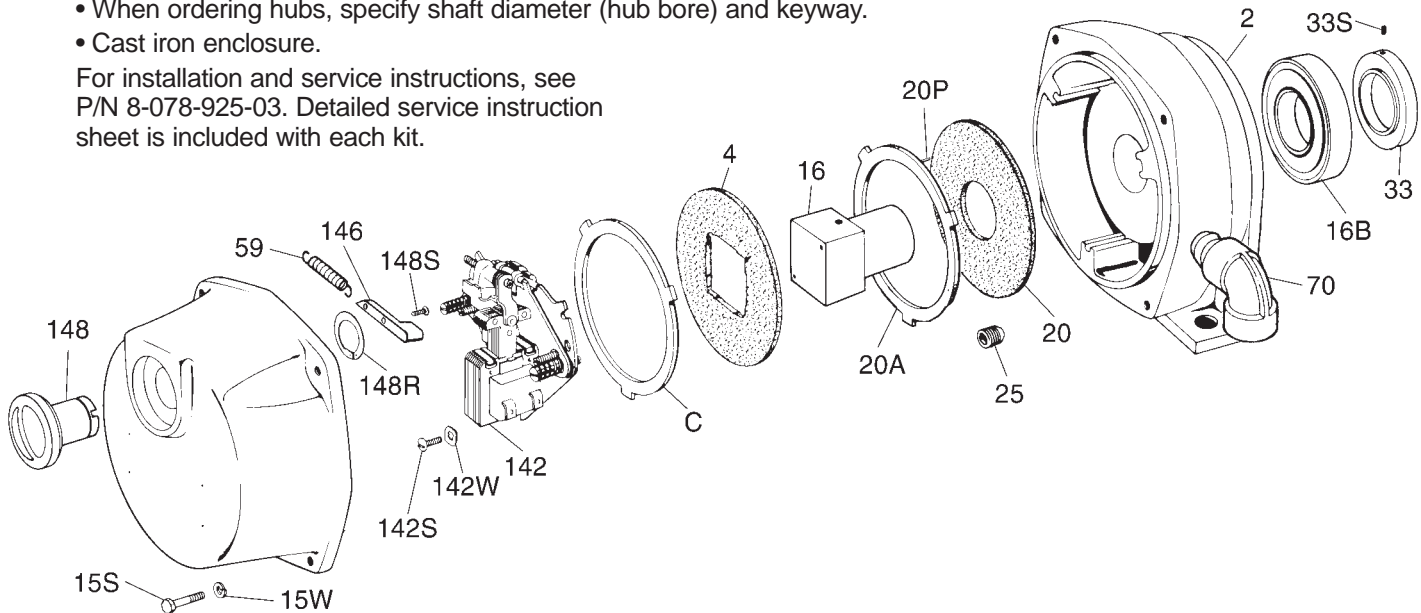
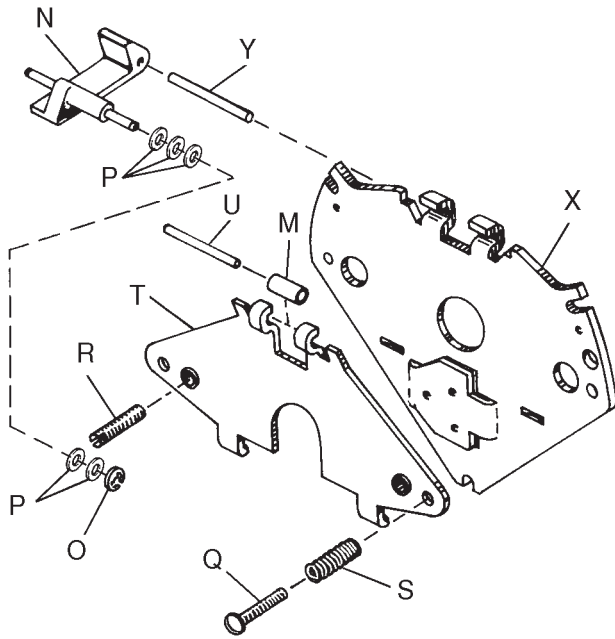


TABLE 1
Components of Standard Horizontal AC Brakes

Item No. or Kit No.	Description	Part Number ↓	Torque (lb-ft)				
			1.5	3	6	10	15
			Brake Model Number → 1-065-012-00 1-065-022-00 1-065-032-00 1-065-052-00 1-065-062-00				
2*	Housing and endplate assembly	5-72-5507-00	1	1			
	Housing and endplate assembly	5-72-5508-00			1		
	Housing and endplate assembly	5-72-5509-00				1	1
C	Stationary disc kit	5-66-8351-00	1	1	2	3	3
4	Friction disc	5-66-8452-00	1	1	2	3	3
148S	Machine screw hex head 3/8 - 16 x 2 grade 5	9-16-3232-00	4	4	4	4	4
15U	Flat washer plain 3/8	9-45-0132-00	4	4	4	4	4
15W	Lock washer, spring 3/8 med.	9-45-0332-00	4	4	4	4	4
15N	Nut, hex, reg. 3/8 -16	9-40-0232-00	4	4	4	4	4
16	Hub and set screw assembly (1-disc brake)	5-16-5005-00	1	1			
	Hub and set screw assembly (2-disc brake)	5-16-5006-00			1		
	Hub and set screw assembly (3-disc brake)	5-16-5007-00				1	1
16B	Ball bearing (hub)	9-01-6506-00	1	1	1	1	1
20	Heat barrier	8-020-501-00	1	1	1	1	1
20A	Insulator disc	8-003-501-04	1	1	1	1	1
20P	Spirol pin 3/32 dia. x 5/8 flared head, stainless steel	9-32-2003-00	3	3	3	3	3
25	Set screw 3/4 - 16 x 3/4	9-20-8912-00	4	4	4	4	4
33	Set collar (hub)	8-033-501-00	1	1	1	1	1
33S	Set screw (collar)	9-22-0806-00	1	1	1	1	1
59	Release spring	9-71-0005-00	1	1	1	1	1
70	90° elbow	9-33-3004-00	1	1	1	1	1
142	Support plate assembly (see Table 3)	5-42-5007-00-04	1	1	1	1	1
142S	Machine screw, fillister head #10 - 24 x 1/2	9-12-2808-00	3	3	3	3	3
142W	Lock washer, star internal teeth #10	9-45-0528-00	3	3	3	3	3
146	Release arm	8-146-501-01	1	1	1	1	1
148	Release knob	8-148-504-01	1	1	1	1	1
148R	Retaining ring Truarc #5108-100-ZD	9-03-0001-00	1	1	1	1	1
148S	Machine screw, bind head #8 - 32 x 1/2	9-13-3058-00	1	1	1	1	1

*Includes 15S, 15U, 15W, 15N, 20, 20A, 20P, 25, 59, 70, 146, 148, 148R and 148S.



Support Plate Assembly

TABLE 3

Components of Support Plate Assembly
(less coil) 5-42-5007-00-04

Item	Description	Part Number	No. Req.
M	Bearing	8-006-501-00	1
N	Solenoid lever	8-008-504-01	1
O	Retaining ring	9-03-0057-00	1
P	Spacer	9-45-0168-00	5
Q	Torque adjustment screw	8-009-501-00	2
R	Wear adjustment screw	8-100-501-00	2
S	Pressure spring	9-70-1302-00	2
T	Lever arm and stop nut assembly	5-17-5002-00	1
U	Bearing pin	9-29-4826-00	1
X	Support plate and stop nut assembly	5-26-5007-00	1
Y	Pivot pin	9-29-4836-00	1
Z	No. 4 AC solenoid assembly (less coil)	5-12-5543-00	1

TABLE 4 – Coil Assemblies (No. 4 - 60 Hz)

Item	Description	Part No.	No. Req.
ZZ	115 Vac	5-96-6401-05	1
	230 Vac	5-96-6402-05	1
	460 Vac	5-96-6404-05	1
	575 Vac	5-96-6405-05	1
	115/230 Vac	5-96-6407-05	1
	230/460 Vac	5-96-6409-05	1

Above coils are UL listed as Class A, however, they contain Class H insulation.

TABLE 5 – Replacement Brakes

Torque (lb-ft)	Current Model Number	Obsolete Model Number
1.5	1-065-012-00	UHF-52
3	1-065-022-00	UHF-52A
6	1-065-032-00	UHF-54
10	1-065-052-00	UHF-56A
15	1-065-062-00	UHF-56B

Solenoid and Coil

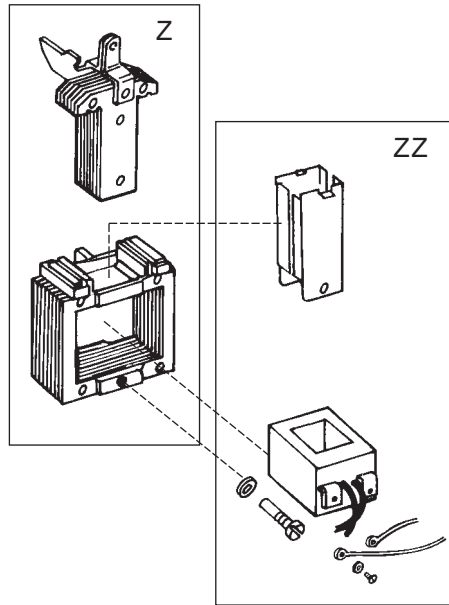


TABLE 6 – Contents of Kits and Assemblies

Letter Designation	Kit Description
C	Stationary disc kit (5-66-8351-00) 1 – Stationary disc
Z	No. 4 AC solenoid assembly (5-12-5543-00) 1 – Plunger and solenoid link assembly 1 – Frame 3 – Solenoid mounting screws
ZZ	Coil assembly (5-96-64XX-00) 1 – Coil 2 – Lead wire and terminal assemblies 2 – Terminal screws 2 – Terminal lock washers 2 – Plunger guides 1 – Plunger guide screw 1 – Plunger guide lock washer