



Two Groove Sheaves COMBINATION GROOVE FOR "4L" or "A" Belts and "5L" or "B" Belts

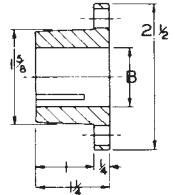


Table No. 1

Part No.	DIAMETERS			Type	DIMENSIONS								Wt. Lbs. Less Bush.
	O.D.	Datum "A"	Datum "B"		O.L.	F	L	P	C	X	G	E	
2BK32H	3.35"	2.60"	3.00"	1	2 13/16"	1 3/4"	1 1/4"	7/8"	1 5/16"	7/8"	7/16"	3/16"	2.1
2BK34H	3.55	2.80	3.20	1	2 13/16	1 3/4	1 1/4	7/8	1 5/16	7/8	7/16	3/16	2.4
2BK36H	3.75	3.00	3.40	1	2 3/8	1 3/4	1 1/4	7/16	7/8	7/8	7/16	3/16	2.0
2BK40H	3.95	3.20	3.60	1	2 3/8	1 3/4	1 1/4	7/16	7/8	7/8	7/16	3/16	2.4
2BK45H	4.25	3.50	3.90	1	2 3/8	1 3/4	1 1/4	7/16	7/8	7/8	7/16	3/16	3.0
2BK47H	4.45	3.70	4.10	2	1 3/4	1 3/4	1 1/4	7/16	—	7/8	7/16	3/16	2.8
2BK50H	4.75	4.00	4.40	2	1 3/4	1 3/4	1 1/4	7/16	—	7/8	7/16	3/16	3.3
2BK52H	4.95	4.20	4.60	2	1 3/4	1 3/4	1 1/4	7/16	—	7/8	7/16	3/16	3.6
2BK55H	5.25	4.50	4.90	2	1 3/4	1 3/4	1 1/4	7/16	—	7/8	7/16	3/16	3.9
2BK57H	5.45	4.70	5.10	2	1 3/4	1 3/4	1 1/4	7/16	—	7/8	7/16	3/16	4.3
2BK60H	5.75	5.00	5.40	2	1 3/4	1 3/4	1 1/4	7/16	—	7/8	7/16	3/16	4.4
2BK62H	5.95	5.20	5.60	2	1 3/4	1 3/4	1 1/4	7/16	—	7/8	7/16	3/16	4.5
2BK65H	6.25	5.50	5.90	3	1 3/4	1 3/4	1 1/4	7/16	1/4	7/8	7/16	3/16	4.5
2BK67H	6.45	5.70	6.10	3	1 3/4	1 3/4	1 1/4	7/16	1/4	7/8	7/16	3/16	5.0
2BK70H	6.75	6.00	6.40	3	1 3/4	1 3/4	1 1/4	7/16	1/4	7/8	7/16	3/16	5.1
2BK80H	7.75	7.00	7.40	3	1 3/4	1 3/4	1 1/4	7/16	1/4	7/8	7/16	3/16	6.4
2BK90H	8.75	8.00	8.40	3	1 3/4	1 3/4	1 1/4	7/16	1/4	7/8	7/16	3/16	7.6
2BK100H	9.75	9.00	9.40	3	1 3/4	1 3/4	1 1/4	7/16	1/4	7/8	7/16	3/16	8.4
2BK110H	10.75	10.00	10.40	3	1 3/4	1 3/4	1 1/4	7/16	1/4	7/8	7/16	3/16	9.3
2BK120H	11.75	11.00	11.40	3	1 3/4	1 3/4	1 1/4	7/16	1/4	7/8	7/16	3/16	11.0
2BK130H	12.75	12.00	12.40	3	1 3/4	1 3/4	1 1/4	7/16	1/4	7/8	7/16	3/16	13.1
2BK140H	13.75	13.00	13.40	3	1 3/4	1 3/4	1 1/4	7/16	1/4	7/8	7/16	3/16	14.8
2BK160H	15.75	15.00	15.40	3	1 3/4	1 3/4	1 1/4	7/16	1/4	7/8	7/16	3/16	17.5
2BK190H	18.75	18.00	18.40	3	1 3/4	1 3/4	1 1/4	7/16	1/4	7/8	7/16	3/16	21.5

Stock "H" Bushings

Table No. 2

Stock Bores	Keyseats
3/8"	None
7/16"	None
1/2"	1/8" x 1/16"
9/16"	1/8 x 1/16
5/8"	3/16 x 3/32
11/16"	3/16 x 3/32
3/4"	3/16 x 3/32
13/16"	3/16 x 3/32
7/8"	3/16 x 3/32
15/16"	1/4 x 1/8
1	1/4 x 1/8
1 1/16"	1/4 x 1/8
1 1/8"	1/4 x 1/8
1 3/16"	1/4 x 1/8
1 1/4"	1/4 x 1/16*
1 5/16"	5/16 x 1/16*
1 3/8"	5/16 x 1/16*
1 3/8"	3/8 x 1/16*
1 7/16"	3/8 x 1/16*
1 1/2"	3/8 x 1/16*

Millimeter Bores

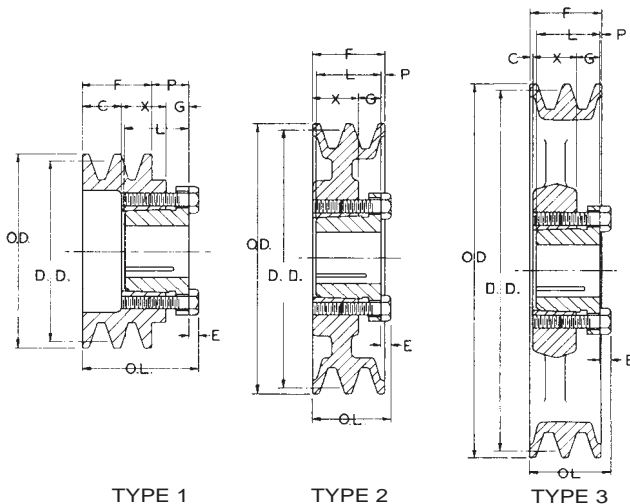
Millimeter Bore	Keyseat
10 mm	None
11	None
12	None
14	5 mm x 2.5 mm
16	5 x 2.5
18	6 x 3
19	6 x 3
20	6 x 3
22	6 x 3
24	8 x 3.5
25	8 x 3.5
28	8 x 3.5
30	8 x 3.5
32	10 x 4
35	10 x 4
36	10 x 4
38	10 x 4

Stock Spline Bores

.978 - 10 Inv.	x
1 1/8 - 6B	x
1 3/8 - 6B	x
1 3/8 - 21 Inv.	x

Part Numbers are specified by "H" and bore size. Example: "H - 1 1/8"

*These sizes are furnished with special keys to fit standard depth keyseats.



CLAMP FIT ON SHAFT

