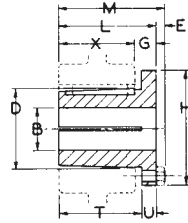
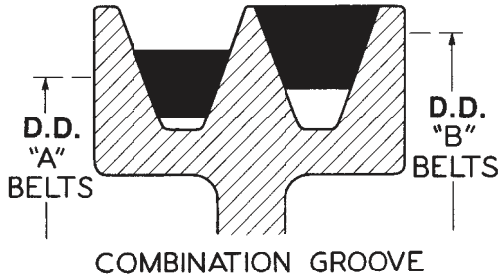


For Use with All "A" and "B" Section Belts



Standard Keyseats

Table No. 1

Bore Range	Keyseat
1/2" - 9/16"	1/8" x 1/16"
5/8 - 7/8	3/16 x 3/32
15/16 - 1 1/4	1/4 x 1/8
1 5/16 - 1 3/8	5/16 x 5/32
1 7/16 - 1 3/4	3/8 x 3/16
1 13/16 - 2 1/4	1/2 x 1/4
2 5/16 - 2 11/16	5/8 x 5/16

1 3/8" Bore Bushings also available with 3/8" x 3/16" Keyseat

A

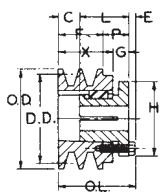
COMBINATION GROOVE



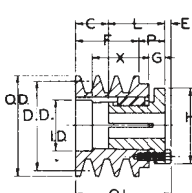
Table No. 2

Bushing Dimensions

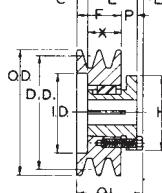
Part No.	Dimensions									Bore Range	Wt. Lbs.
	M	L	G	X	E	T	U	D	H		
P1	2 3/16"	1 15/16"	5/8"	1 5/16"	1/4"	1 17/32"	13/32"	1 15/16"	3"	1/2" - 1 3/4"	1 1/4
P2	3 3/16	2 15/16	5/8	2 5/16	1/4"	2 17/32	13/32	1 15/16	3	3/4 - 1 3/4	1 1/2
Q1	2 25/32	2 1/2	3/4	1 3/4	9/32"	1 31/32	17/32	2 7/8	4 1/8	3/4 - 2 11/16	3 1/2



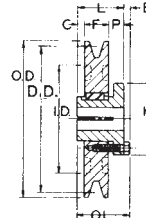
TYPE 2



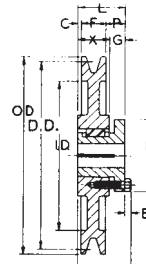
TYPE 3



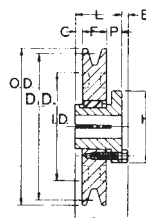
TYPE 5



TYPE 10



TYPE 13



TYPE 16

Table No. 3

Specifications — Stock "TB" Sheaves

DIAMETERS				1 GROOVE, F = 1"											Wt. Less Bush.
Datum "A"	Datum "B"	Outside	Inside	Part Number		Type	Dimensions								
				Sheave	Bushing		O.L.	L	P	C	H	G	X	E	
3.0"	3.4"	3.75"	—	1TB34	P1	2	2 5/16"	1 15/16"	1 1/16"	1/8"	3"	5/8"	1 7/16"	1/4"	2.0
3.2	3.6	3.95	—	1TB36	P1	2	2 5/16	1 15/16	1 1/16	1/8	3	5/8"	1 7/16	1/4	2.3
3.4	3.8	4.15	—	1TB38	P1	2	2 5/16	1 15/16	1 1/16	1/8	3	5/8"	1 7/16	1/4	2.6
3.6	4.0	4.35	—	1TB40	P1	10-Sol.	2 3/16	1 15/16	5/8	5/16	3	—	—	1/4	2.1
3.8	4.2	4.55	—	1TB42	P1	10-Sol.	2 3/16	1 15/16	5/8	5/16	3	—	—	1/4	2.4
4.0	4.4	4.75	—	1TB44	P1	10-Sol.	2 3/16	1 15/16	5/8	5/16	3	—	—	1/4	2.8
4.2	4.6	4.95	—	1TB46	P1	10-Sol.	2 3/16	1 15/16	5/8	5/16	3	—	—	1/4	3.1
4.4	4.8	5.15	—	1TB48	P1	10-Sol.	2 3/16	1 15/16	5/8	5/16	3	—	—	1/4	3.5
4.6	5.0	5.35	—	1TB50	P1	10-Sol.	2 3/16	1 15/16	5/8	5/16	3	—	—	1/4	3.9
4.8	5.2	5.55	—	1TB52	P1	10-Sol.	2 3/16	1 15/16	5/8	5/16	3	—	—	1/4	4.1
5.0	5.4	5.75	—	1TB54	P1	10-Sol.	2 3/16	1 15/16	5/8	5/16	3	—	—	1/4	4.6
5.2	5.6	5.95	—	1TB56	P1	10-Sol.	2 3/16	1 15/16	5/8	5/16	3	—	—	1/4	5.1
5.4	5.8	6.15	—	1TB58	P1	10-Sol.	2 3/16	1 15/16	5/8	5/16	3	—	—	1/4	5.6
5.6	6.0	6.35	4 1/2"	1TB60	P1	10-Web	2 3/16	1 15/16	5/8	5/16	3	—	—	1/4	6.0
5.8	6.2	6.55	4 11/16"	1TB62	P1	10-Web	2 3/16	1 15/16	5/8	5/16	3	—	—	1/4	5.5
6.0	6.4	6.75	4 7/8	1TB64	P1	10-Web	2 3/16	1 15/16	5/8	5/16	3	—	—	1/4	5.8
6.2	6.6	6.95	5 1/16	1TB66	P1	10-Web	2 3/16	1 15/16	5/8	5/16	3	—	—	1/4	5.9
6.4	6.8	7.15	5 5/16	1TB68	P1	10-Web	2 3/16	1 15/16	5/8	5/16	3	—	—	1/4	6.1
6.6	7.0	7.35	5 1/2	1TB70	P1	16-Arm	2 3/16	1 15/16	25/32	5/32	3	5/8	1 5/16	1/4	6.4
7.0	7.4	7.75	5 15/16	1TB74	P1	16-Arm	2 3/16	1 15/16	25/32	5/32	3	5/8	1 5/16	1/4	7.3
7.6	8.0	8.35	6 1/2	1TB80	P1	16-Arm	2 3/16	1 15/16	25/32	5/32	3	5/8	1 5/16	1/4	7.8
8.2	8.6	8.95	7 1/16	1TB86	P1	16-Arm	2 3/16	1 15/16	25/32	5/32	3	5/8	1 5/16	1/4	8.6
8.6	9.0	9.35	7 1/2	1TB90	P1	16-Arm	2 3/16	1 15/16	25/32	5/32	3	5/8	1 5/16	1/4	8.9
9.0	9.4	9.75	7 15/16	1TB94	P1	16-Arm	2 3/16	1 15/16	25/32	5/32	3	5/8	1 5/16	1/4	9.1
10.6	11.0	11.35	9 7/16	1TB110	P1	16-Arm	2 3/16	1 15/16	25/32	5/32	3	5/8	1 5/16	1/4	11.1
12.0	12.4	12.75	10 15/16	1TB124	Q1	16-Arm	2 25/32	2 1/2	1 1/8	3/8	4 1/8	3/4	1 3/4	9/32	17.8
13.2	13.6	13.95	12 1/16	1TB136	Q1	16-Arm	2 25/32	2 1/2	1 1/8	3/8	4 1/8	3/4	1 3/4	9/32	18.2
15.0	15.4	15.75	13 15/16	1TB154	Q1	16-Arm	2 25/32	2 1/2	1 1/8	3/8	4 1/8	3/4	1 3/4	9/32	20.3
15.6	16.0	16.35	14 1/2	1TB160	Q1	16-Arm	2 25/32	2 1/2	1 1/8	3/8	4 1/8	3/4	1 3/4	9/32	22.0
18.0	18.4	18.75	16 15/16	1TB184	Q1	16-Arm	2 25/32	2 1/2	1 1/8	3/8	4 1/8	3/4	1 3/4	9/32	27.5
19.5	20.0	20.35	18 1/2	1TB200	Q1	16-Arm	2 25/32	2 1/2	1 1/8	3/8	4 1/8	3/4	1 3/4	9/32	27.2
24.5	25.0	25.35	23 1/2	1TB250	Q1	16-Arm	2 25/32	2 1/2	1 1/8	3/8	4 1/8	3/4	1 3/4	9/32	42.4
29.5	30.0	30.35	28 1/2	1TB300	Q1	16-Arm	2 25/32	2 1/2	1 1/8	3/8	4 1/8	3/4	1 3/4	9/32	56.0
37.5	38.0	38.35	36 1/2	1TB380	Q1	16-Arm	2 25/32	2 1/2	1 1/8	3/8	4 1/8	3/4	1 3/4	9/32	78.0

For optimum sheave selection, see B5V Stock Sheave Listing on Page A-11.