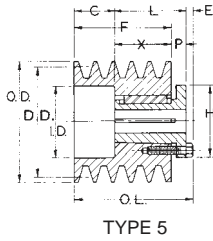
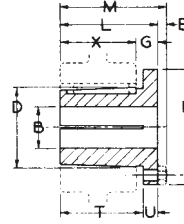
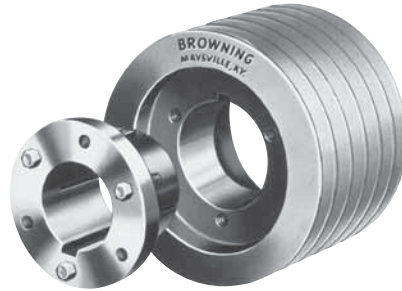


For Use with All "A" and "B" Section Belts



TYPE 5

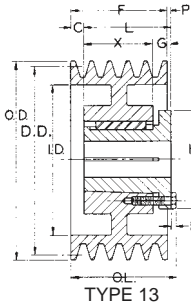


Standard Keyseats

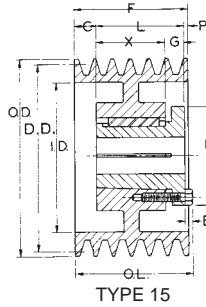
Table No. 1

Bore Range	Keyseat
1" - 1 1/4"	1/4" x 1/8"
1 5/16 - 1 3/8	5/16 x 5/32
1 7/16 - 1 3/4	3/8 x 3/16
1 13/16 - 2 1/4	1/2 x 1/4
2 5/16 - 2 3/4	5/8 x 5/16
2 13/16 - 3 1/4	3/4 x 3/8
3 3/8 - 3 5/8	7/8 x 7/16
3 7/8 - 4 1/2	1 x 1/2
4 5/8 - 5 1/2	1 1/4 x 5/8

1 3/8" Bore Bushings (except R2) also available with 3/8" x 3/16" Keyseat.



TYPE 13



TYPE 15

Table No. 2

Bushing Dimensions

Part No.	Dimensions									Bore Range	Wt. Lbs.
	M	L	G	X	E	T	U	D	H		
Q2	3 25/32"	3 1/2"	3/4"	2 3/4"	9/32"	2 31/32"	17/32	2 7/8"	4 1/8"	1" - 2 5/8"	4 1/2
R2	5 5/32	4 7/8	7/8	4	9/32	4 1/4	5/8	4	5 3/8	1 3/8 - 3 5/8	11
S1	4 3/4	4 3/8	1 1/16	3 5/16	3/8	3 5/8	3/4	4 5/8	6 3/8	1 11/16 - 4 1/4	13 1/2
U0	5 13/32	4 15/16	1 3/16	3 3/4	15/32	4 3/16	3/4	6	8 3/8	2 3/8 - 5 1/2	27

Table No. 3

Specifications — Stock "B" Sheaves

DIAMETERS				8 Grooves, F = 6 1/4"											Wt. Less Bush.
Datum "A"	Datum "B"	Outside	Inside	Part Number		Type	Dimensions								
				Sheave	Bushing		OL	L	P	C	H	G	X	E	
8 GROOVES, F = 6 1/4"															
5.0"	5.4"	5.75"	3 7/8"	8B54Q	Q2	5	7 9/32"	3 1/2"	3/4"	3 1/2"	4 1/8"	—	2 3/4"	9/32"	18.1
5.2	5.6	5.95	4 1/16	8B56Q	Q2	5	7 9/32	3 1/2	3/4	3 1/2	4 1/8	—	2 3/4	9/32	20.6
5.4	5.8	6.15	4 1/4	8B58Q	Q2	15-Web	6 1/4	3 1/2	2	3/4	4 1/8	3/4"	2 3/4	9/32	20.9
5.6	6.0	6.35	4 7/16	8B60Q	Q2	15-Web	6 1/4	3 1/2	2	3/4	4 1/8	3/4	2 3/4	9/32	23.0
5.8	6.2	6.55	4 11/16	8B62Q	Q2	15-Web	6 1/4	3 1/2	2	3/4	4 1/8	3/4	2 3/4	9/32	23.0
6.0	6.4	6.75	4 7/8	8B64Q	Q2	15-Web	6 1/4	3 1/2	2	3/4	4 1/8	3/4	2 3/4	9/32	25.0
6.2	6.6	6.95	5 1/16	8B66Q	Q2	15-Web	6 1/4	3 1/2	2	3/4	4 1/8	3/4	2 3/4	9/32	27.3
6.4	6.8	7.15	5 1/4	8B68Q	Q2	15-Web	6 1/4	3 1/2	2	3/4	4 1/8	3/4	2 3/4	9/32	31.1
6.6	7.0	7.35	5 1/2	8B70R	R2	15-Web	6 9/32	4 7/8	1/4	1 1/8	5 3/8	7/8	4	9/32	29.5
7.0	7.4	7.75	5 7/8	8B74R	R2	15-Web	6 9/32	4 7/8	1/4	1 1/8	5 3/8	7/8	4	9/32	34.9
7.6	8.0	8.35	6 1/2	8B80R	R2	15-Web	6 9/32	4 7/8	1/4	1 1/8	5 3/8	7/8	4	9/32	42.9
8.2	8.6	8.95	7 1/16	8B86R	R2	15-Web	6 9/32	4 7/8	1/4	1 1/8	5 3/8	7/8	4	9/32	52.0
8.6	9.0	9.35	7 1/2	8B90R	R2	15-Web	6 9/32	4 7/8	1/4	1 1/8	5 3/8	7/8	4	9/32	48.3
9.0	9.4	9.75	7 7/8	8B94R	R2	15-Web	6 9/32	4 7/8	1/4	1 1/8	5 3/8	7/8	4	9/32	49.3
10.6	11.0	11.35	9 1/2	8B110R	R2	15-Web	6 9/32	4 7/8	1/4	1 1/8	5 3/8	7/8	4	9/32	55.0
12.0	12.4	12.75	10 7/8	8B124R	R2	15-Arm	6 9/32	4 7/8	1/4	1 1/8	5 3/8	7/8	4	9/32	60.0
13.2	13.6	13.95	12 1/16	8B136R	R2	15-Arm	6 9/32	4 7/8	1/4	1 1/8	5 3/8	7/8	4	9/32	68.5
15.0	15.4	15.75	13 7/8	8B154R	R2	15-Arm	6 9/32	4 7/8	1/4	1 1/8	5 3/8	7/8	4	9/32	77.3
18.0	18.4	18.75	16 7/8	8B184R	R2	15-Arm	6 9/32	4 7/8	1/4	1 1/8	5 3/8	7/8	4	9/32	90.0
19.5	20.0	20.35	18 1/2	8B200R	R2	15-Arm	6 9/32	4 7/8	1/4	1 1/8	5 3/8	7/8	4	9/32	96.0
24.5	25.0	25.35	23 1/2	8B250R	R2	15-Arm	6 9/32	4 7/8	1/4	1 1/8	5 3/8	7/8	4	9/32	129
29.5	30.0	30.35	28 1/2	8B300R	R2	15-Arm	6 9/32	4 7/8	1/4	1 1/8	5 3/8	7/8	4	9/32	163
29.5	30.0	30.35	28 1/2	8B300S	S1	15-Arm	6 1/4	4 3/8	1/4	1 1/8	6 3/8	1 1/16	3 5/16	3/8	168
37.5	38.0	38.35	36 1/2	8B380R	R2	15-Arm	6 9/32	4 7/8	1/4	1 1/8	5 3/8	7/8	4	9/32	228
37.5	38.0	38.35	36 1/2	8B380S	S1	15-Arm	6 1/4	4 3/8	1/4	1 1/8	6 3/8	1 1/16	3 5/16	3/8	238