

For Use with All "A" and "B" Section Belts

### Standard Keyseats

Table No. 1

Bore Range	Keyseat
1/2" — 9/16"	1/8" x 1/16"
5/8 — 7/8	3/16 x 3/32
15/16 — 1 1/4	1/4 x 1/8
1 5/16 — 1 3/8	5/16 x 5/32
1 7/16 — 1 3/4	3/8 x 3/16
1 13/16 — 2 1/4	1/2 x 1/4
2 5/16 — 2 11/16	5/8 x 5/16

1 3/8" Bore Bushings also available with 3/8" x 3/16" Keyseat

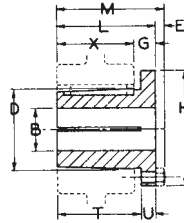
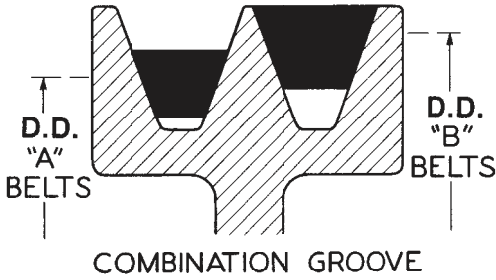
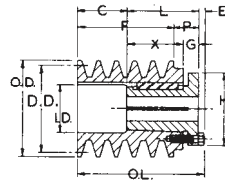


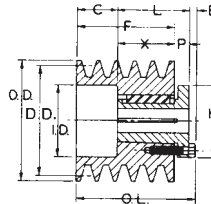
Table No. 2

### Bushing Dimensions

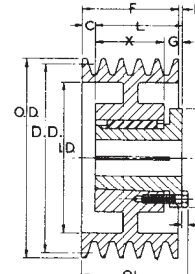
Part No.	Dimensions										Bore Range	Wt. Lbs.
	M	L	G	X	E	T	U	D	H			
P1	2 3/16"	1 15/16"	5/8"	1 5/16"	1/4"	1 17/32"	13/32"	1 15/16"	3"	1/2" — 1 3/4"	1 1/4	
P2	3 3/16	2 15/16	5/8	2 5/16	1/4	2 17/32	13/32	1 15/16	3	3/4 — 1 3/4	1 1/2	
Q1	2 25/32	2 1/2	3/4	1 3/4	9/32	1 31/32	17/32	2 7/8	4 1/8	3/4 — 2 11/16	3 1/2	
Q2	3 25/32	3 1/2	3/4	2 3/4	9/32	2 31/32	17/32	2 7/8	4 1/8	1 — 2 5/8	4 1/2	



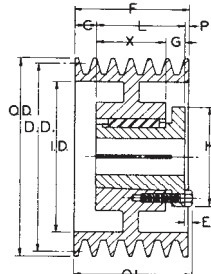
TYPE 3



TYPE 5



TYPE 13



TYPE 15

Table No. 3

### Specifications — Stock "TB" Sheaves

DIAMETERS				4 GROOVES, F = 3 1/4"											Wt. Less Bush.
Datum "A"	Datum "B"	Outside	Inside	Part Number		Type	Dimensions								
				Sheave	Bushing		OL	L	P	C	H	G	X	E	
3.0"	3.4"	3.75"	2"	4TB34	P2	3	4 9/16"	2 15/16"	1 1/16"	1 3/8"	3"	5/8"	2 5/16"	1/4"	4.5
3.2	3.6	3.95	2 1/16	4TB36	P2	3	4 9/16	2 15/16	1 1/16	1 3/8	3	5/8	2 5/16	1/4	5.3
3.4	3.8	4.15	2 5/16	4TB38	P1	5	4 1/8	1 15/16	5/8	1 15/16	3	—	1 5/16	1/4	4.8
3.6	4.0	4.35	2 1/2	4TB40	P1	5	4 1/8	1 15/16	5/8	1 15/16	3	—	1 5/16	1/4	5.5
3.8	4.2	4.55	2 11/16	4TB42	P1	5	4 1/8	1 15/16	5/8	1 15/16	3	—	1 5/16	1/4	5.9
4.0	4.4	4.75	2 7/8	4TB44	P1	13-Web	3 1/2	1 15/16	0	1 5/16	3	5/8	1 5/16	1/4	6.5
4.2	4.6	4.95	3 1/16	4TB46	P1	13-Web	3 1/2	1 15/16	0	1 5/16	3	5/8	1 5/16	1/4	7.1
4.4	4.8	5.15	3 5/16	4TB48	P1	13-Web	3 1/2	1 15/16	0	1 5/16	3	5/8	1 5/16	1/4	7.5
4.6	5.0	5.35	3 1/2	4TB50	P1	13-Web	3 1/2	1 15/16	0	1 5/16	3	5/8	1 5/16	1/4	8.3
4.8	5.2	5.55	3 11/16	4TB52	P1	13-Web	3 1/2	1 15/16	0	1 5/16	3	5/8	1 5/16	1/4	9.1
5.0	5.4	5.75	3 7/8	4TB54	P1	13-Web	3 1/2	1 15/16	0	1 5/16	3	5/8	1 5/16	1/4	9.6
5.2	5.6	5.95	4 1/16	4TB56	P1	13-Web	3 1/2	1 15/16	0	1 5/16	3	5/8	1 5/16	1/4	10.6
5.4	5.8	6.15	4 5/16	4TB58	P1	13-Web	3 1/2	1 15/16	0	1 5/16	3	5/8	1 5/16	1/4	11.6
5.6	6.0	6.35	4 1/2	4TB60	P1	13-Web	3 1/2	1 15/16	0	1 5/16	3	5/8	1 5/16	1/4	11.9
5.8	6.2	6.55	4 11/16	4TB62	P1	13-Web	3 1/2	1 15/16	0	1 5/16	3	5/8	1 5/16	1/4	11.1
6.0	6.4	6.75	4 7/8	4TB64	P1	13-Web	3 1/2	1 15/16	0	1 5/16	3	5/8	1 5/16	1/4	11.8
6.2	6.6	6.95	5 1/16	4TB66	P1	13-Web	3 1/2	1 15/16	0	1 5/16	3	5/8	1 5/16	1/4	12.0
6.4	6.8	7.15	5 5/16	4TB68	P1	13-Web	3 1/2	1 15/16	0	1 5/16	3	5/8	1 5/16	1/4	12.5
6.6	7.0	7.35	5 1/2	4TB70	Q1	13-Web	3 17/32	2 1/2	0	3/4	4 1/8	3/4	1 3/4	9/32	15.3
7.0	7.4	7.75	5 15/16	4TB74	Q1	13-Web	3 17/32	2 1/2	0	3/4	4 1/8	3/4	1 3/4	9/32	15.3
7.6	8.0	8.35	6 1/2	4TB80	Q1	13-Web	3 17/32	2 1/2	0	3/4	4 1/8	3/4	1 3/4	9/32	17.0
8.2	8.6	8.95	7 1/16	4TB86	Q1	13-Web	3 17/32	2 1/2	0	3/4	4 1/8	3/4	1 3/4	9/32	20.8
8.6	9.0	9.35	7 1/2	4TB90	Q1	13-Arm	3 17/32	2 1/2	0	3/4	4 1/8	3/4	1 3/4	9/32	20.0
9.0	9.4	9.75	7 15/16	4TB94	Q1	13-Arm	3 17/32	2 1/2	0	3/4	4 1/8	3/4	1 3/4	9/32	20.1
10.6	11.0	11.35	9 7/16	4TB110	Q1	13-Arm	3 17/32	2 1/2	0	3/4	4 1/8	3/4	1 3/4	9/32	25.8
12.0	12.4	12.75	10 15/16	4TB124	Q1	13-Arm	3 17/32	2 1/2	0	3/4	4 1/8	3/4	1 3/4	9/32	27.5
13.2	13.6	13.95	12 1/16	4TB136	Q1	13-Arm	3 17/32	2 1/2	0	3/4	4 1/8	3/4	1 3/4	9/32	31.5
15.0	15.4	15.75	13 15/16	4TB154	Q1	13-Arm	3 17/32	2 1/2	0	3/4	4 1/8	3/4	1 3/4	9/32	36.0
15.6	16.0	16.35	14 1/2	4TB160	Q1	13-Arm	3 17/32	2 1/2	0	3/4	4 1/8	3/4	1 3/4	9/32	39.0
18.0	18.4	18.75	16 15/16	4TB184	Q1	13-Arm	3 17/32	2 1/2	0	3/4	4 1/8	3/4	1 3/4	9/32	44.8
19.5	20.0	20.35	18 1/2	4TB200	Q1	13-Arm	3 17/32	2 1/2	0	3/4	4 1/8	3/4	1 3/4	9/32	57.0
24.5	25.0	25.35	23 1/2	4TB250	Q1	13-Arm	3 17/32	2 1/2	0	3/4	4 1/8	3/4	1 3/4	9/32	69.5
29.5	30.0	30.35	28 1/2	4TB300	Q1	13-Arm	3 17/32	2 1/2	0	3/4	4 1/8	3/4	1 3/4	9/32	90.8
37.5	38.0	38.35	36 1/2	4TB380	Q1	13-Arm	3 17/32	2 1/2	0	3/4	4 1/8	3/4	1 3/4	9/32	125

For optimum sheave selection, see B5V Stock Sheave Listing on Page A-14

