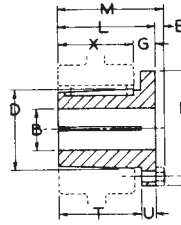


For Use with All "C" Section Belts



Standard Keyseats

Table No. 1

Bore Range	Keyseat
3/4" — 7/8"	3/16" x 3/32"
15/16" — 1 1/4"	1/4 x 1/8
1 5/16" — 1 3/8"	5/16 x 5/32
1 7/16" — 1 3/4"	3/8 x 3/16
1 13/16" — 2 1/4"	1/2 x 1/4
2 5/16" — 2 11/16"	5/8 x 5/16

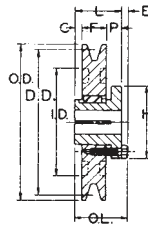
1 3/8" Bore Bushings also available with 3/8" x 3/16" Keyseat.

Table No. 2

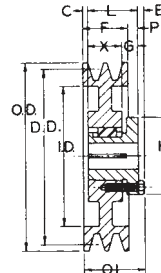
Bushing Dimensions

Part No.	Dimensions									Bore Range	Wt. Lbs..
	M	L	G	X	E	T	U	D	H		
Q1	2 25/32"	2 1/2"	3/4"	1 3/4"	9/32"	1 31/32"	17/32"	2 7/8"	4 1/8"	3/4" — 2 11/16"	3 1/2

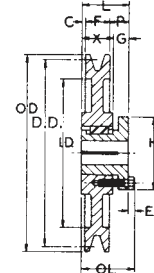
Close Grain
Cast Iron
◆
Accurately
Machined
◆
Statically
Balanced



TYPE 10



TYPE 13



TYPE 16

Table No. 3

Specifications — Stock "TC" Sheaves

DIAMETERS			1 GROOVE, F = 1 1/4"											Wt. Less Bush.
Datum "C"	Outside	Inside	Part Number		Type	DIMENSIONS								
			Sheave	Bush- ing		O.L.	L	P	C	H	G	X	E	
7.0"	7.40"	—	1TC70	Q1	10-Sol.	2 25/32"	2 1/2"	3/4"	1/2"	4 1/8"	—	—	9/32"	9.3
7.2	7.60	—	1TC72	Q1	10-Web.	2 25/32	2 1/2	3/4	1/2	4 1/8	—	—	9/32	10.1
7.4	7.80	—	1TC74	Q1	10-Web.	2 25/32	2 1/2	3/4	1/2	4 1/8	—	—	9/32	10.8
7.6	8.00	—	1TC76	Q1	10-Web.	2 25/32	2 1/2	3/4	1/2	4 1/8	—	—	9/32	11.4
7.8	8.20	6"	1TC78	Q1	10-Web.	2 25/32	2 1/2	3/4	1/2	4 1/8	—	—	9/32	9.8
8.0	8.40	6 1/4	1TC80	Q1	10-Web.	2 25/32	2 1/2	3/4	1/2	4 1/8	—	—	9/32	9.9
8.2	8.60	6 7/16	1TC82	Q1	10-Web.	2 25/32	2 1/2	3/4	1/2	4 1/8	—	—	9/32	10.1
8.4	8.80	6 5/8	1TC84	Q1	10-Web.	2 25/32	2 1/2	3/4	1/2	4 1/8	—	—	9/32	11.0
8.6	9.00	6 13/16	1TC86	Q1	10-Web.	2 25/32	2 1/2	3/4	1/2	4 1/8	—	—	9/32	10.6
8.8	9.20	7	1TC88	Q1	10-Web.	2 25/32	2 1/2	3/4	1/2	4 1/8	—	—	9/32	11.6
9.0	9.40	7 1/4	1TC90	Q1	10-Web.	2 25/32	2 1/2	3/4	1/2	4 1/8	—	—	9/32	11.4
9.2	9.60	7 7/16	1TC92	Q1	10-Web.	2 25/32	2 1/2	3/4	1/2	4 1/8	—	—	9/32	12.6
9.4	9.80	7 5/8	1TC94	Q1	16-Arm	2 25/32	2 1/2	1	1/4	4 1/8	3/4"	1 3/4"	9/32	14.8
9.6	10.00	7 13/16	1TC96	Q1	16-Arm	2 25/32	2 1/2	1	1/4	4 1/8	3/4	1 3/4	9/32	15.8
9.8	10.20	8	1TC98	Q1	16-Arm	2 25/32	2 1/2	1	1/4	4 1/8	3/4	1 3/4	9/32	15.9
10.0	10.40	8 1/4	1TC100	Q1	16-Arm	2 25/32	2 1/2	1	1/4	4 1/8	3/4	1 3/4	9/32	16.8
10.2	10.60	8 7/16	1TC102	Q1	16-Arm	2 25/32	2 1/2	1	1/4	4 1/8	3/4	1 3/4	9/32	16.1
10.6	11.00	8 13/16	1TC106	Q1	16-Arm	2 25/32	2 1/2	1	1/4	4 1/8	3/4	1 3/4	9/32	17.3
11.0	11.40	9 1/4	1TC110	Q1	16-Arm	2 25/32	2 1/2	1	1/4	4 1/8	3/4	1 3/4	9/32	17.5
11.4	11.80	9 5/8	1TC114	Q1	16-Arm	2 25/32	2 1/2	1	1/4	4 1/8	3/4	1 3/4	9/32	18.6
12.0	12.40	10 1/4	1TC120	Q1	16-Arm	2 25/32	2 1/2	1	1/4	4 1/8	3/4	1 3/4	9/32	19.5
13.0	13.40	11 1/4	1TC130	Q1	16-Arm	2 25/32	2 1/2	1	1/4	4 1/8	3/4	1 3/4	9/32	22.8
16.0	16.40	14 1/4	1TC160	Q1	16-Arm	2 25/32	2 1/2	1	1/4	4 1/8	3/4	1 3/4	9/32	28.5
20.0	20.40	18 1/4	1TC200	Q1	16-Arm	2 25/32	2 1/2	1	1/4	4 1/8	3/4	1 3/4	9/32	37.8
24.0	24.40	22 1/4	1TC240	Q1	16-Arm	2 25/32	2 1/2	1	1/4	4 1/8	3/4	1 3/4	9/32	49.5

For Use with All "C" Section Belts
Specifications — Stock "TC" Sheaves

Table No. 1

DIAMETERS			2 GROOVES, F = 2 1/4"											Wt. Less Bush.
Datum "C"	Outside	Inside	Part Number		Type	DIMENSIONS								
			Sheave	Bushing		O.L.	L	P	C	H	G	X	E	
7.0"	7.40"	5 1/4"	2TC70	Q1	13-Web	3 1/32"	2 1/2"	1/2"	1/4"	4 1/8"	3/4"	1 3/4"	9/32"	14.0
7.2	7.60	5 7/16	2TC72	Q1	13-Web	3 1/32	2 1/2	1/2	1/4	4 1/8	3/4	1 3/4	9/32	15.4
7.4	7.80	5 5/8	2TC74	Q1	13-Web	3 1/32	2 1/2	1/2	1/4	4 1/8	3/4	1 3/4	9/32	16.6
7.6	8.00	5 13/16	2TC76	Q1	13-Web	3 1/32	2 1/2	1/2	1/4	4 1/8	3/4	1 3/4	9/32	17.6
7.8	8.20	6	2TC78	Q1	13-Web	3 1/32	2 1/2	1/2	1/4	4 1/8	3/4	1 3/4	9/32	14.1
8.0	8.40	6 1/4	2TC80	Q1	13-Web	3 1/32	2 1/2	1/2	1/4	4 1/8	3/4	1 3/4	9/32	14.3
8.2	8.60	6 7/16	2TC82	Q1	13-Web	3 1/32	2 1/2	1/2	1/4	4 1/8	3/4	1 3/4	9/32	14.8
8.4	8.80	6 5/8	2TC84	Q1	13-Web	3 1/32	2 1/2	1/2	1/4	4 1/8	3/4	1 3/4	9/32	16.4
8.6	9.00	6 13/16	2TC86	Q1	13-Web	3 1/32	2 1/2	1/2	1/4	4 1/8	3/4	1 3/4	9/32	16.1
8.8	9.20	7	2TC88	Q1	13-Web	3 1/32	2 1/2	1/2	1/4	4 1/8	3/4	1 3/4	9/32	17.1
9.0	9.40	7 1/4	2TC90	Q1	13-Web	3 1/32	2 1/2	1/2	1/4	4 1/8	3/4	1 3/4	9/32	16.8
9.2	9.60	7 7/16	2TC92	Q1	13-Web	3 1/32	2 1/2	1/2	1/4	4 1/8	3/4	1 3/4	9/32	18.4
9.4	9.80	7 5/8	2TC94	Q1	13-Arm	3 1/32	2 1/2	1/2	1/4	4 1/8	3/4	1 3/4	9/32	19.1
9.6	10.00	7 13/16	2TC96	Q1	13-Arm	3 1/32	2 1/2	1/2	1/4	4 1/8	3/4	1 3/4	9/32	20.6
9.8	10.20	8	2TC98	Q1	13-Arm	3 1/32	2 1/2	1/2	1/4	4 1/8	3/4	1 3/4	9/32	19.5
10.0	10.40	8 1/4	2TC100	Q1	13-Arm	3 1/32	2 1/2	1/2	1/4	4 1/8	3/4	1 3/4	9/32	22.0
10.2	10.60	8 7/16	2TC102	Q1	13-Arm	3 1/32	2 1/2	1/2	1/4	4 1/8	3/4	1 3/4	9/32	21.3
10.6	11.00	8 13/16	2TC106	Q1	13-Arm	3 1/32	2 1/2	1/2	1/4	4 1/8	3/4	1 3/4	9/32	22.4
11.0	11.40	9 1/4	2TC110	Q1	13-Arm	3 1/32	2 1/2	1/2	1/4	4 1/8	3/4	1 3/4	9/32	22.4
11.4	11.80	9 5/8	2TC114	Q1	13-Arm	3 1/32	2 1/2	1/2	1/4	4 1/8	3/4	1 3/4	9/32	23.5
12.0	12.40	10 1/4	2TC120	Q1	13-Arm	3 1/32	2 1/2	1/2	1/4	4 1/8	3/4	1 3/4	9/32	24.9
13.0	13.40	11 1/4	2TC130	Q1	13-Arm	3 1/32	2 1/2	1/2	1/4	4 1/8	3/4	1 3/4	9/32	28.6
16.0	16.40	14 1/4	2TC160	Q1	13-Arm	3 1/32	2 1/2	1/2	1/4	4 1/8	3/4	1 3/4	9/32	36.0
20.0	20.40	18 1/4	2TC200	Q1	13-Arm	3 1/32	2 1/2	1/2	1/4	4 1/8	3/4	1 3/4	9/32	46.0
24.0	24.40	22 1/4	2TC240	Q1	13-Arm	3 1/32	2 1/2	1/2	1/4	4 1/8	3/4	1 3/4	9/32	59.5

For Sheaves with larger bores, see Page A-51.

Table No. 2

Specifications — Stock "TC" Sheaves

DIAMETERS			3 GROOVES, F = 3 1/4"											Wt. Less Bush.
Datum "C"	Outside	Inside	Part Number		Type	DIMENSIONS								
			Sheave	Bushing		O.L.	L	P	C	H	G	X	E	
7.0"	7.40"	5 1/4"	3TC70	Q1	13-Web	3 17/32"	2 1/2"	0	3/4"	4 1/8"	3/4"	1 3/4"	9/32"	16.8
7.2	7.60	5 7/16	3TC72	Q1	13-Web	3 17/32	2 1/2	0	3/4	4 1/8	3/4	1 3/4	9/32	18.0
7.4	7.80	5 5/8	3TC74	Q1	13-Web	3 17/32	2 1/2	0	3/4	4 1/8	3/4	1 3/4	9/32	19.1
7.6	8.00	5 13/16	3TC76	Q1	13-Web	3 17/32	2 1/2	0	3/4	4 1/8	3/4	1 3/4	9/32	21.3
7.8	8.20	6	3TC78	Q1	13-Web	3 17/32	2 1/2	0	3/4	4 1/8	3/4	1 3/4	9/32	17.4
8.0	8.40	6 1/4	3TC80	Q1	13-Web	3 17/32	2 1/2	0	3/4	4 1/8	3/4	1 3/4	9/32	17.8
8.2	8.60	6 7/16	3TC82	Q1	13-Web	3 17/32	2 1/2	0	3/4	4 1/8	3/4	1 3/4	9/32	17.9
8.4	8.80	6 5/8	3TC84	Q1	13-Web	3 17/32	2 1/2	0	3/4	4 1/8	3/4	1 3/4	9/32	20.4
8.6	9.00	6 13/16	3TC86	Q1	13-Web	3 17/32	2 1/2	0	3/4	4 1/8	3/4	1 3/4	9/32	19.5
8.8	9.20	7	3TC88	Q1	13-Web	3 17/32	2 1/2	0	3/4	4 1/8	3/4	1 3/4	9/32	22.5
9.0	9.40	7 1/4	3TC90	Q1	13-Web	3 17/32	2 1/2	0	3/4	4 1/8	3/4	1 3/4	9/32	20.4
9.2	9.60	7 7/16	3TC92	Q1	13-Web	3 17/32	2 1/2	0	3/4	4 1/8	3/4	1 3/4	9/32	22.8
9.4	9.80	7 5/8	3TC94	Q1	13-Arm	3 17/32	2 1/2	0	3/4	4 1/8	3/4	1 3/4	9/32	23.0
9.6	10.00	7 13/16	3TC96	Q1	13-Arm	3 17/32	2 1/2	0	3/4	4 1/8	3/4	1 3/4	9/32	25.3
9.8	10.20	8	3TC98	Q1	13-Arm	3 17/32	2 1/2	0	3/4	4 1/8	3/4	1 3/4	9/32	24.4
10.0	10.40	8 1/4	3TC100	Q1	13-Arm	3 17/32	2 1/2	0	3/4	4 1/8	3/4	1 3/4	9/32	27.6
10.2	10.60	8 7/16	3TC102	Q1	13-Arm	3 17/32	2 1/2	0	3/4	4 1/8	3/4	1 3/4	9/32	24.9
10.6	11.00	8 13/16	3TC106	Q1	13-Arm	3 17/32	2 1/2	0	3/4	4 1/8	3/4	1 3/4	9/32	26.9
11.0	11.40	9 1/4	3TC110	Q1	13-Arm	3 17/32	2 1/2	0	3/4	4 1/8	3/4	1 3/4	9/32	27.4
11.4	11.80	9 5/8	3TC114	Q1	13-Arm	3 17/32	2 1/2	0	3/4	4 1/8	3/4	1 3/4	9/32	28.3
12.0	12.40	10 1/4	3TC120	Q1	13-Arm	3 17/32	2 1/2	0	3/4	4 1/8	3/4	1 3/4	9/32	30.3
13.0	13.40	11 1/4	3TC130	Q1	13-Arm	3 17/32	2 1/2	0	3/4	4 1/8	3/4	1 3/4	9/32	34.9
16.0	16.40	14 1/4	3TC160	Q1	13-Arm	3 17/32	2 1/2	0	3/4	4 1/8	3/4	1 3/4	9/32	46.0
20.0	20.40	18 1/4	3TC200	Q1	13-Arm	3 17/32	2 1/2	0	3/4	4 1/8	3/4	1 3/4	9/32	54.5
24.0	24.40	22 1/4	3TC240	Q1	13-Arm	3 17/32	2 1/2	0	3/4	4 1/8	3/4	1 3/4	9/32	71.0

For Sheaves with larger bores, see Page A-51.

