



300

Browning[®]

BOA CONCENTRIC

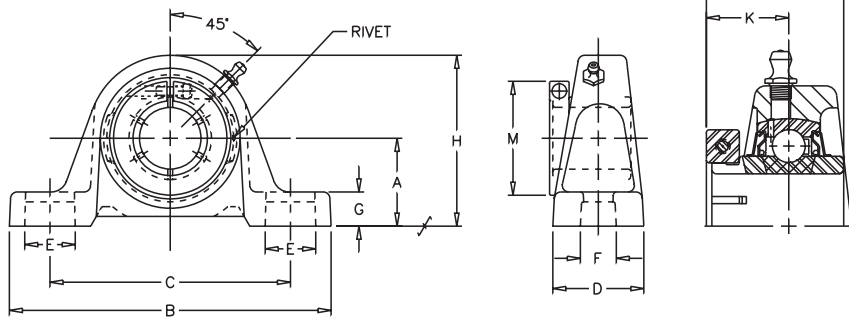
VPB-300

Lock: BOA Concentric
Seal: Contact
Housing: Cast Iron
Temperature: -20°F to 200°F
Self Alignment: ±1.5°
Inserts: VB-300
 Dimensions pg 68
 Ratings pg 69

Bore Size	Fitting
1"	1/4" - 28NF
1 3/16" - 2 3/16"	1/8" NPT

V VALUE & QUALITY
P PILLOW BLOCK
B BOA

3 300
0 MEDIUM
0 DUTY



SHAFT DIA. IN.	UNIT NO.	BRG. NO.	Dimensions in Inches												BOLT SIZE IN	UNIT WT.
			A	B	C		D	E	F	G	H	J	K	M		
					MIN.	MAX.										
⊗ 1	VPB-316	VB-316	1 3/4	6 3/16	4 3/16	5 1/16	1 3/4	15/16	9/16	23/32	3 11/32	1 9/16	15/16	2 1/16	1/2	3.1
⊗ 1 3/16	VPB-319	VB-319	1 7/8	6 3/4	4 5/8	5 3/8	1 3/4	7/8	9/16	23/32	3 11/16	1 3/4	1 1/16	2 7/16	1/2	3.1
⊗ 1 1/4	VPB-320	VB-220														
⊗ 1 7/16	VPB-323	VB-323	2 1/8	7 1/4	5 1/8	5 15/16	2	29/32	9/16	13/16	4 3/16	2	1 1/4	2 11/16	1/2	3.9
⊗ 1 1/2	VPB-324	VB-324	2 5/16	7 13/16	5 19/32	6 11/32	2 3/16	1	11/16	13/16	4 9/16	2	1 1/4	2 13/16	1/2	4.8
⊗ 1 11/16	VPB-327	VB-327	2 5/16	7 15/16	5 3/4	6 1/2	2 1/4	1	11/16	13/16	4 5/8	2 3/32	1 11/32	3 1/4	5/8	5.8
⊗ 1 3/4	VPB-328	VB-328														
⊗ 1 15/16	VPB-331	VB-331	2 1/2	8 13/16	6 7/16	7 7/16	2 5/16	1	11/16	7/8	4 31/32	2 1/4	1 3/8	3 1/2	5/8	8.1
⊗ 2	VPB-332	VB-232														
⊗ 2 3/16	VPB-335	VB-335	2 3/4	9 1/2	6 7/8	7 15/16	2 3/8	1-5/32	11/16	7/8	5 9/16	2 5/8	1 5/8	4 1/16	5/8	10.4

⊗ Air Handling (AH) To order specify AH suffix, i.e. VPB-316 AH (See page 50)

CROSS REFERENCE TO COMPETITORS PRODUCTS

REPLACES DODGE P2B-DLM	REPLACES MB KC-55/35		

Refer to Interchange Section Page 166 for more detail.