

Browning®

Ball Bearings



100

STAMPED S
 STEEL S
 RUBBER GROMMET R
 PILLOW BLOCK P
 ECCENTRIC E

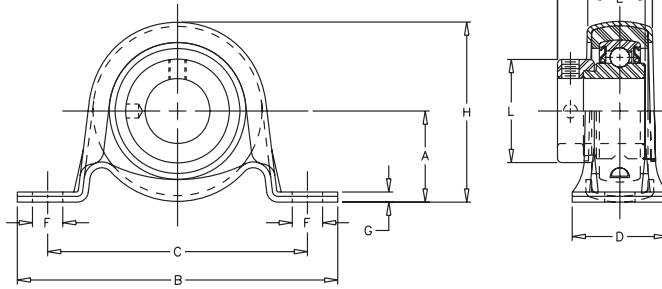
100 1

INTERMEDIATE 0
 DUTY 0

SSRPE-100

Lock: Eccentric
 Seal: Contact
 Housing: Stamped Steel
 Rubber Grommet
 Temperature: -20°F to 200°F
 Self Alignment: ±1.5°
 Inserts: RLE-100

No Re-Lube



SHAFT DIA. IN	MAX STEADY RADIAL LOAD LBS	UNIT NO.	Dimensions In Inches											UNIT WT.	
			A	B	C	D	E	F	G	H	J	K	L		M
3/4	250	SSRPE-112	1 1/8	4 1/4	3 3/8	1 1/4	27/32	7/16	1/8	2 13/64	1 17/64	15/16	1 5/16	1 11/32	0.7
7/8	300	SSRPE-114	1 5/16	4 5/8	3 3/4	1 3/8	61/64	7/16	5/32	2 19/32	1 25/64	15/16	1 1/2	1 11/32	1.1
15/16		SSRPE-115													
1		SSRPE-116													

CROSS REFERENCE TO COMPETITORS PRODUCTS

		REPLACES SKF SR-FM	
REPLACES FAFNIR RPB			

Refer to Interchange Section Page 166 for more detail.

See page 156 for trademark acknowledgments.