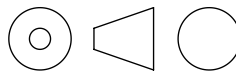


NOTE:
BODINE CABLE KIT PART #N3981 CONTAINS THE MATING
CABLES FOR THE POWER, SIGNAL, AND ENCODER CONNECTORS.

BODINE ELECTRIC COMPANY

PART NO./REV: INFM0172 B	
DESCRIPTION: MOTOR 34B4FEBL-FV	
SHEET: 1/1	UNLESS OTHERWISE SPECIFIED: UNITS ARE IN INCHES [mm] TOLERANCES: .XX:±.01 .XXX:±.005 ANGLES: X°:±3° X.X°:±0.5°
SCALE: 1:2	
B	

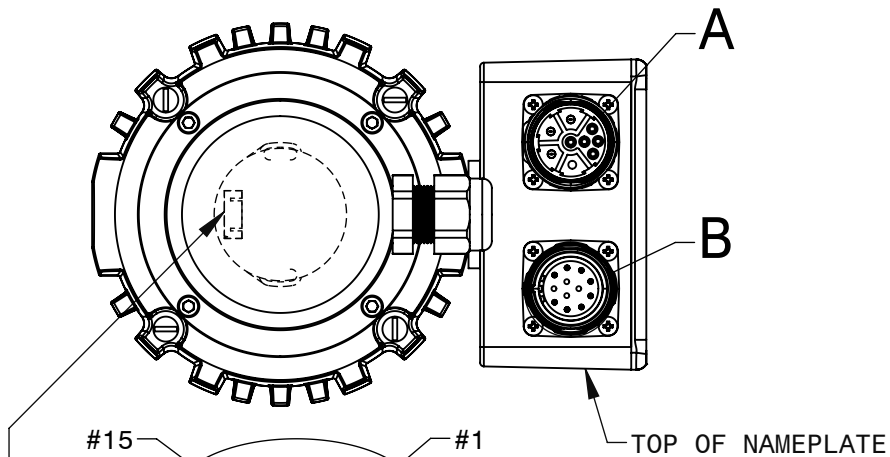


D

C

B

A



- #15
#1
#14
#2
TOP OF NAMEPLATE
- [1] HOUSING JAE PART# FI-W15P-HFE
[15] TERMINALS JAE PART# FI-C3-A1-15000

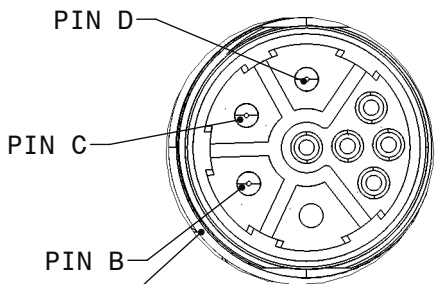
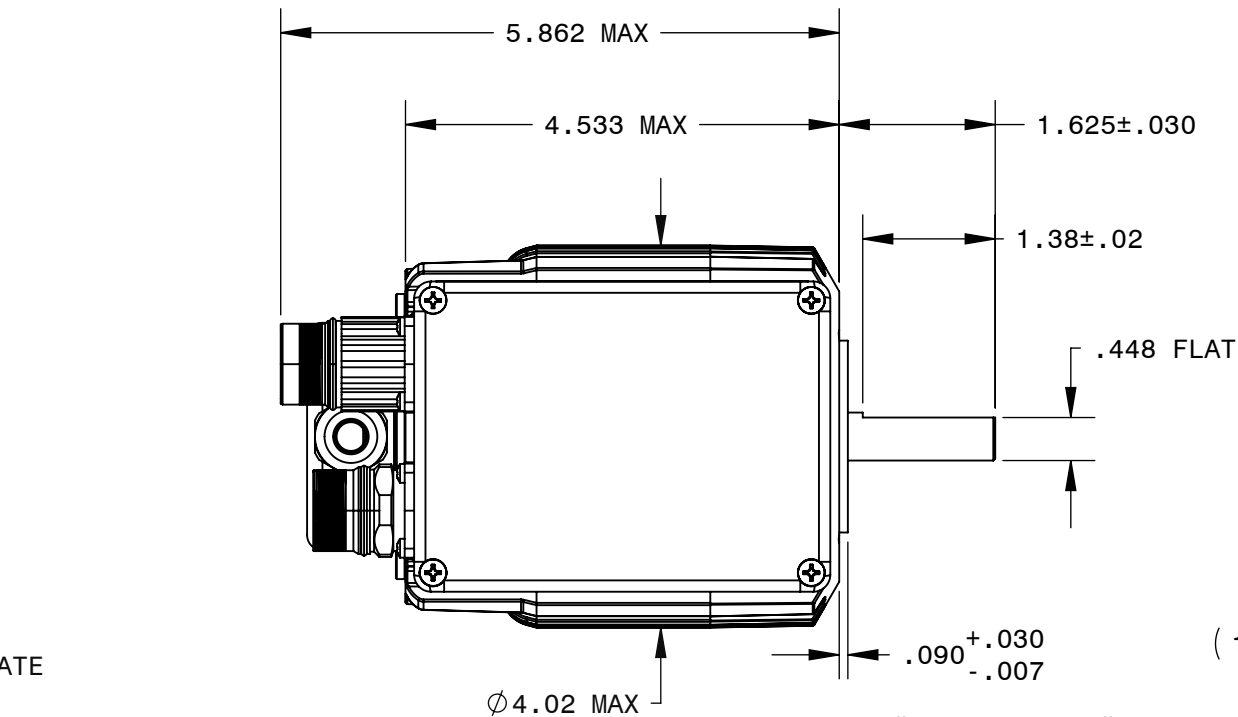
ENCODER CONNECTOR PIN ASSIGNMENTS

PIN	FUNCTION
1	CHANNEL A
2	CHANNEL A-
3	CHANNEL B
4	CHANNEL B-
5	CHANNEL Z
6	CHANNEL Z-
7	CHANNEL U
8	CHANNEL U-
9	CHANNEL V
10	CHANNEL V-
11	CHANNEL W
12	CHANNEL W-
13	VCC
14	GROUND
15	NO CONNECTION

ENCODER CONNECTOR MATING PARTS:
MANUFACTURER: JAE
CONNECTOR: FI-W15S
TERMINAL: FI-C3-A1-15000

REPRESENTATIVE OF MODEL NUMBER(S):

3708



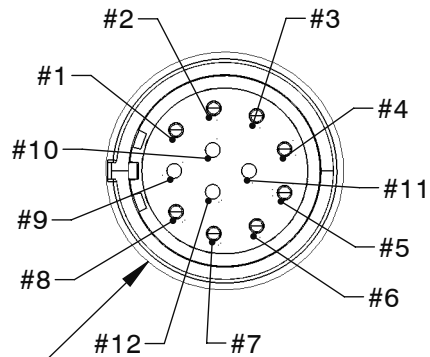
DETAIL A
SCALE 3 : 2

- [1] HOUSING AMPHENOL PART# MB1LLN0900
[3] TERMINALS AMPHENOL PART# SC000036

POWER CONNECTOR PIN ASSIGNMENTS

PIN	FUNCTION
A	NO CONNECTION
B	+24V
C	COMMON
D	GROUND
E	NO CONNECTION
F	NO CONNECTION
G	NO CONNECTION
H	NO CONNECTION
L	NO CONNECTION

POWER CONNECTOR MATING PARTS:
MANUFACTURER: AMPHENOL
CONNECTOR: MB1CKN0900
TERMINAL: SC000045 / SC000014



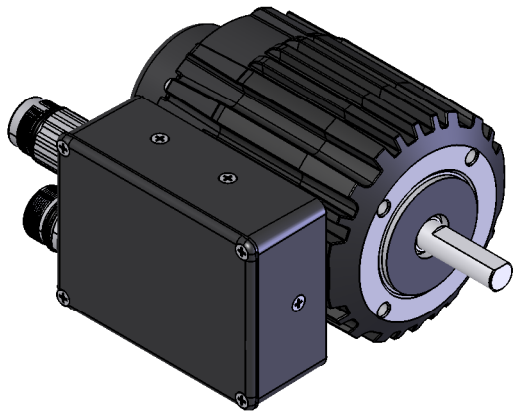
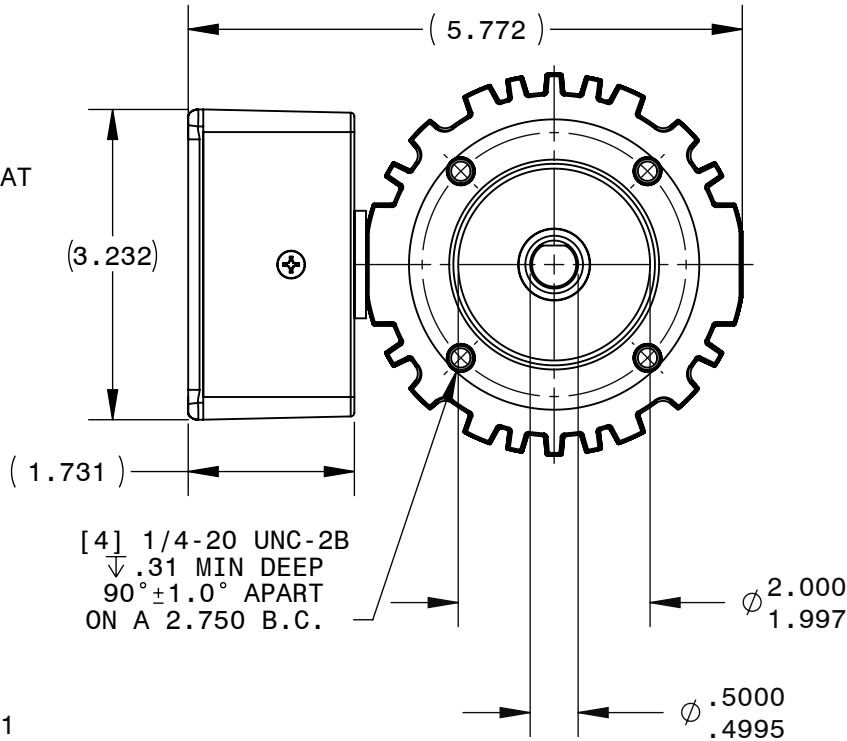
DETAIL B
SCALE 3 : 2

- [1] HOUSING AMPHENOL PART# MA1LAE1200
[8] TERMINALS AMPHENOL PART# SC000035

SIGNAL CONNECTOR PIN ASSIGNMENTS

PIN	FUNCTION
1	TACH
2	F/R
3	PWM
4	ENABLE
5	COMMON
6	+5V
7	FAULT
8	BRAKE
9	NO CONNECTION
10	NO CONNECTION
11	NO CONNECTION
12	NO CONNECTION

SIGNAL CONNECTOR MATING PARTS:
MANUFACTURER: AMPHENOL
CONNECTOR: MA1CAP1200
TERMINAL: SC000044 / SC000013



D

C

B

A