

4

3

2

1

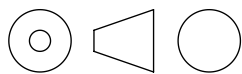
BODINE ELECTRIC COMPANY

PART NO./REV: INFM0385 A

DESCRIPTION:
KIT ACCESSORY SHAFT COVER GB/H AND
5L/H GEARMOTOR

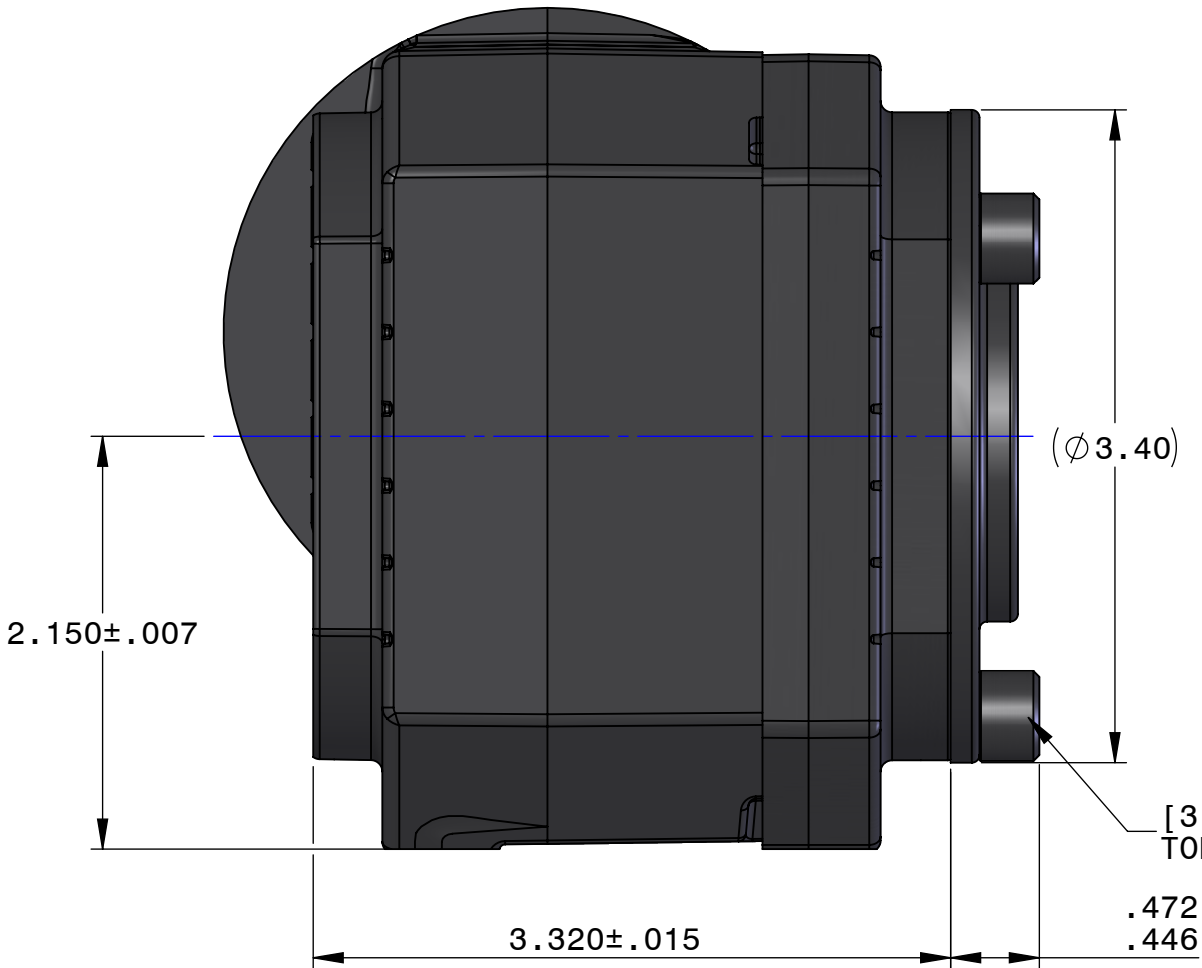
SHEET: 1/1	UNLESS OTHERWISE SPECIFIED:
SCALE: 1:1	UNITS ARE IN INCHES [mm]
B	TOLERANCES: .XX:±.01 .XXX:±.005
	ANGLES: X°:±3° X.X°:±0.5°

- NOTES:
- 1. COVER MATERIAL: ALUMINUM
 - 2. ITEMS SUPPLIED WITH COVER
SCREWS: [3] STEEL #5/16-18 X .50 LONG
[4] STEEL #1/4-20 X .50 LONG
 - 3. COVER CAN BE INSTALLED ON EITHER END OF GEARBOXES

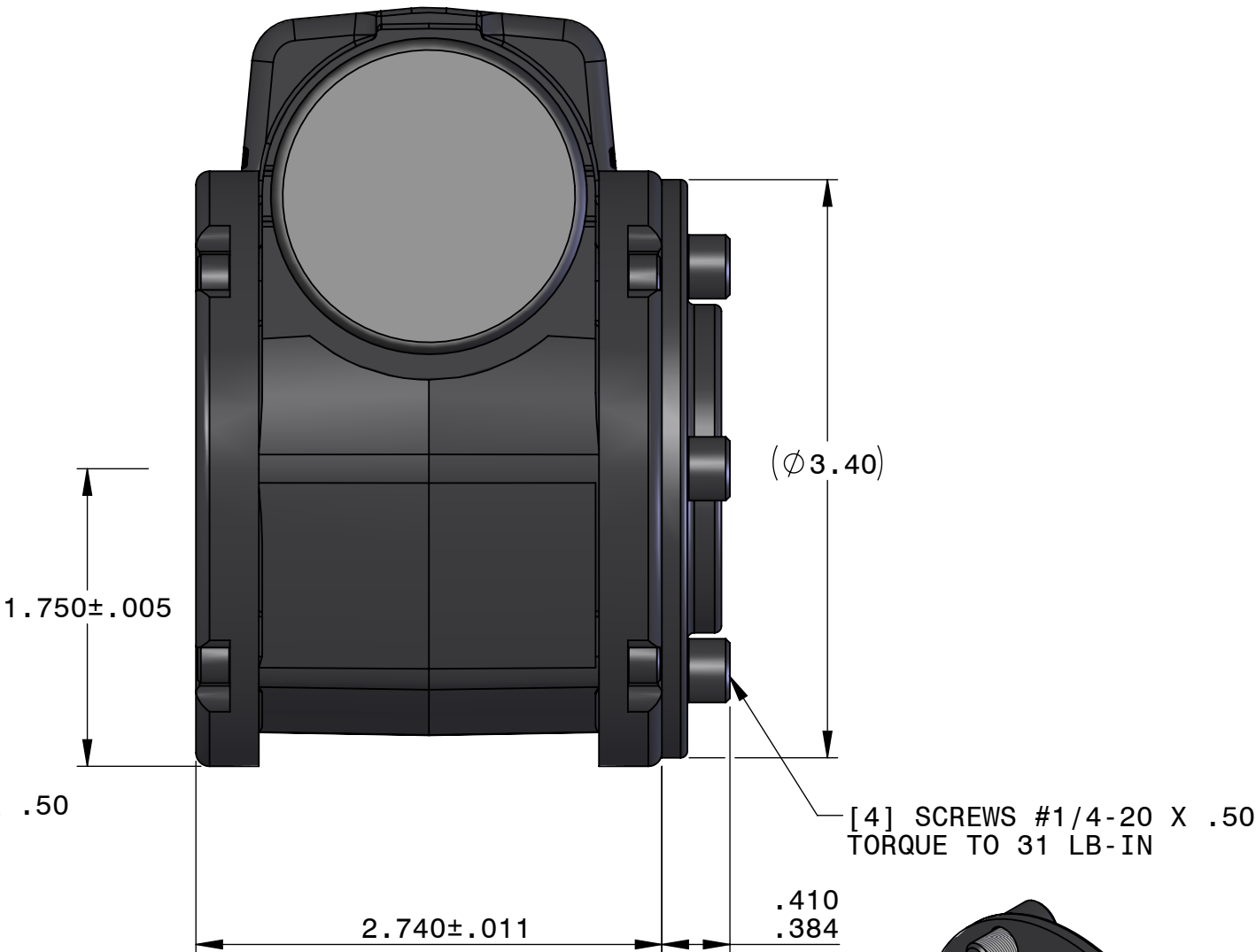


COVER INSTALLED ON 5L/H GEARBOX

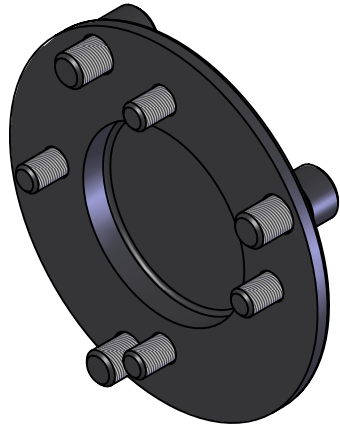
COVER INSTALLED ON GB/H GEARBOX



[3] SCREWS #5/16-18 X .50
TORQUE TO 31 LB-IN



[4] SCREWS #1/4-20 X .50
TORQUE TO 31 LB-IN



REPRESENTATIVE OF MODEL NUMBER(S):

0951