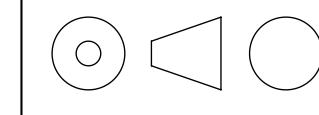
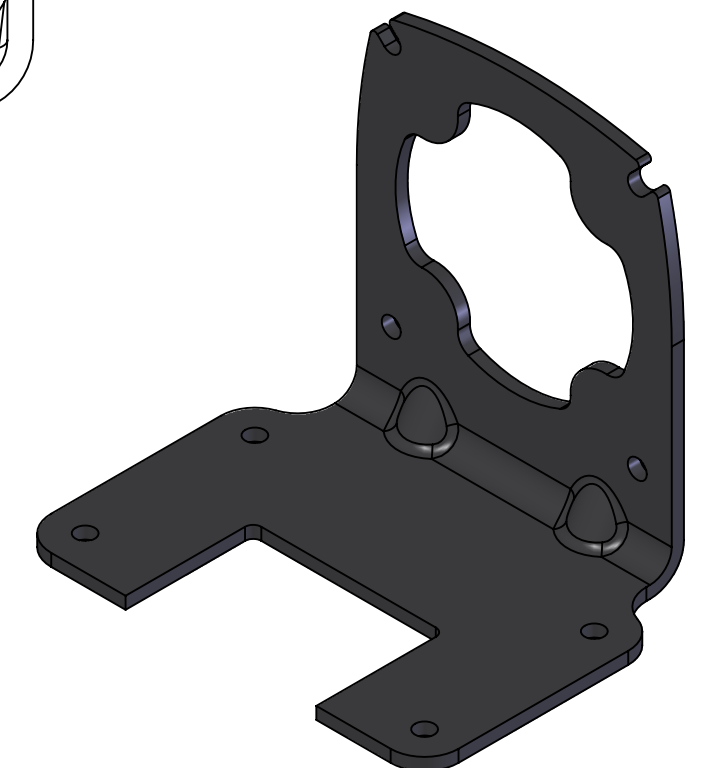
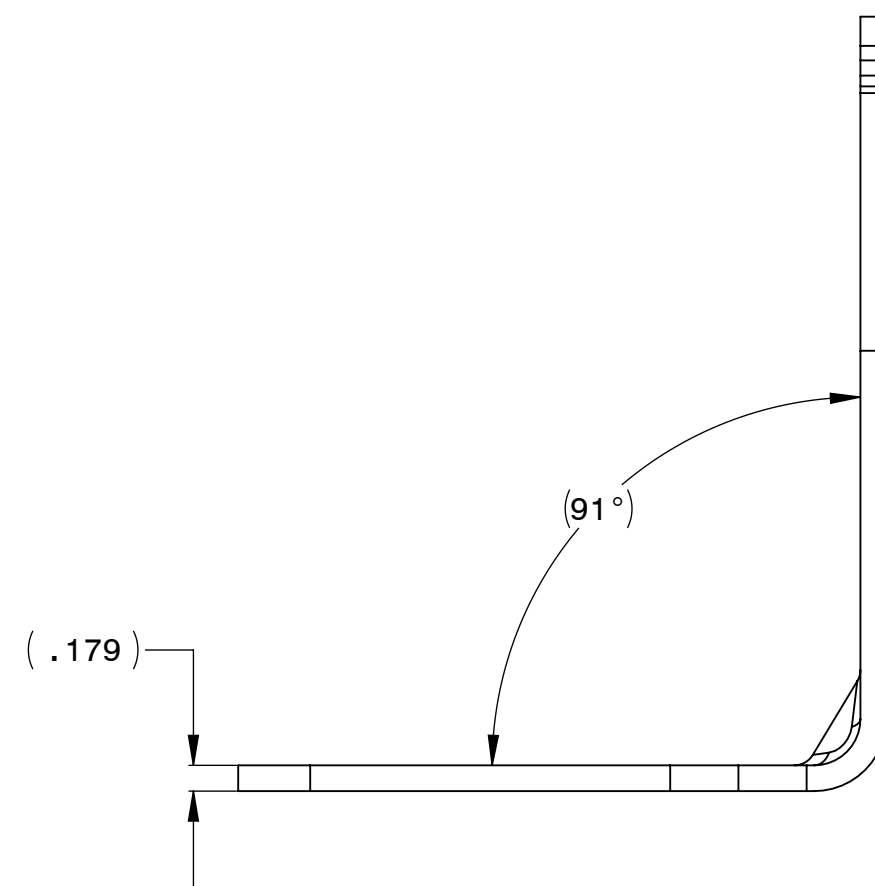
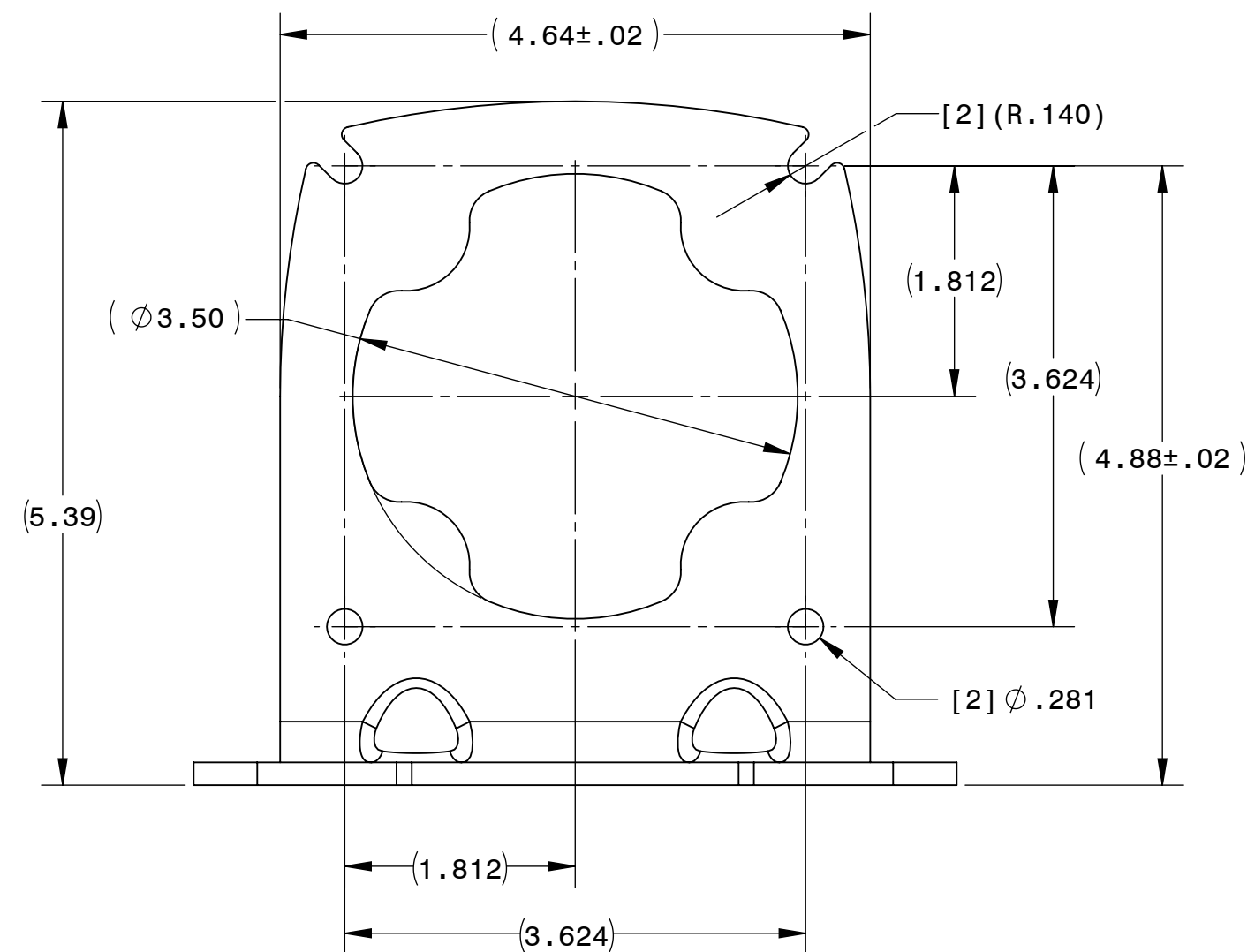
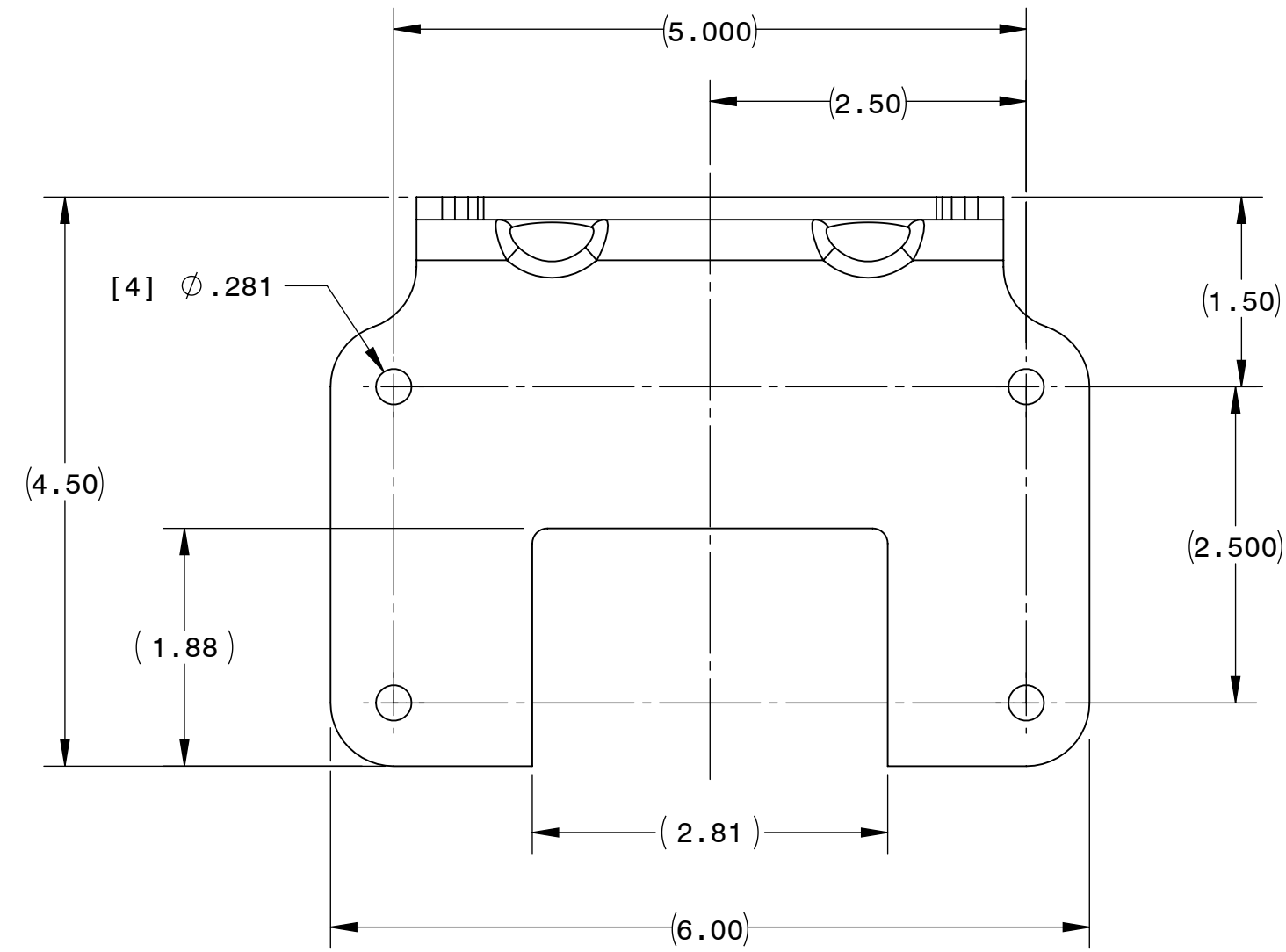


- NOTES:
1. MATERIAL: .179 THICKNESS HRPO SAE 1011 STEEL
 2. [4] M6X1 SCREWS SUPPLIED WITH BRACKET
 3. [4] LOCKWASHERS FOR M6 SCREWS
 4. TORQUE SCREWS TO 50-60 LB-IN



DESCRIPTION:
KIT BRACKET E/F/FX GEARHOUSING
METRIC

SHEET: 1/1	UNLESS OTHERWISE SPECIFIED:
SCALE: 3:4	UNITS ARE IN INCHES [mm]
C	TOLERANCES: .XX:±.01 .XXX:±.005
	ANGLES: X°:±3° X.X°:±0.5°



REPRESENTATIVE OF MODEL NUMBER(S):

1969