

Mechanically held lighting contactor, Contactor amp rating 20Amp  
 0NC \_ 6NO poles, 208-240V 50/60HZ coil, Non-combination type,  
 Enclosure NEMA type 1, Indoor general purpose use



Figure similar

General technical data	
Weight [lb]	8 lb
Height x Width x Depth [in]	14 × 8 × 7 in
Protection against electrical shock	NA for enclosed products
Installation altitude [ft] at height above sea level maximum	6560 ft
Country of origin	USA

Contactor	
Number of NO contacts for main contacts	6
Number of NC contacts for main contacts	0
Operating voltage for main current circuit at AC at 60 Hz maximum	600 V
Contact rating of the main contacts of lighting contactor	
<ul style="list-style-type: none"> <li>• at tungsten (1 pole per 1 phase) rated value</li> <li>• at tungsten (2 poles per 1 phase) rated value</li> <li>• at tungsten (3 poles per 3 phases) rated value</li> </ul>	<p>20A @250V 1p 1ph</p> <p>20A @250V 2p 1ph</p> <p>20A @250V 3p 3ph</p>

• at ballast (1 pole per 1 phase) rated value	20A @347V 1p 1ph
• at ballast (2 poles per 1 phase) rated value	20A @600V 2p 1ph
• at ballast (3 poles per 3 phases) rated value	20A @600V 3p 3ph
• at resistive load (1 pole per 1 phase) rated value	30A @347V 1p 1ph
• at resistive load (2 poles per 1 phase) rated value	30A @600V 2p 1ph
• at resistive load (3 poles per 3 phases) rated value	30A @600V 3p 3ph

#### Auxiliary contact

Number of NC contacts for auxiliary contacts	0
Number of NO contacts for auxiliary contacts	0
Number of total auxiliary contacts maximum	4
Contact rating of auxiliary contacts of contactor according to UL	NA

#### Coil

Type of voltage of the control supply voltage	AC
Control supply voltage	
• at DC rated value	0 ... 0 V
• at AC at 60 Hz rated value	208 ... 240 V
• at AC at 50 Hz rated value	208 ... 240 V
Apparent pick-up power of magnet coil at AC	600 V·A
Apparent holding power of magnet coil at AC	6 V·A
Operating range factor control supply voltage rated value of magnet coil	0.85 ... 1.1

#### Enclosure

Degree of protection NEMA rating of the enclosure	NEMA 1 enclosure
Design of the housing	Indoor general purpose use

#### Mounting/wiring

(mounting position)	Vertical
(mounting type)	Surface mounting and installation
Type of electrical connection for supply voltage line-side	Screw-type terminals
Tightening torque [lbf·in] for supply	18 ... 18 lbf·in
Type of connectable conductor cross-sections at line-side at AWG conductors single or multi-stranded	2x (18 ... 10 AWG)
Temperature of the conductor for supply maximum permissible	75 °C
Material of the conductor for supply	CU
Type of electrical connection for load-side outgoing feeder	Screw-type terminals
Tightening torque [lbf·in] for load-side outgoing feeder	18 ... 18 lbf·in

Type of connectable conductor cross-sections at AWG conductors for load-side outgoing feeder single or multi-stranded	2x (18 ... 10 AWG)
Temperature of the conductor for load-side outgoing feeder maximum permissible	75 °C
Material of the conductor for load-side outgoing feeder	CU
Type of electrical connection of magnet coil	Screw-type terminals
Tightening torque [lbf-in] at magnet coil	18 ... 18 lbf-in
Type of connectable conductor cross-sections of magnet coil at AWG conductors single or multi-stranded	2x (18 ... 10 AWG)
Temperature of the conductor at magnet coil maximum permissible	75 °C
Material of the conductor at magnet coil	CU

#### Short-circuit current rating

Design of the fuse link for short-circuit protection of the main circuit required	none
Design of the short-circuit trip	Thermal magnetic circuit breaker
Maximum short-circuit current breaking capacity (Icu) <ul style="list-style-type: none"> <li>• at 240 V</li> <li>• at 480 V</li> <li>• at 600 V</li> </ul>	5 kA 5 kA 5 kA

#### Further information

**Industrial Controls - Product Overview (Catalogs, Brochures,...)**

[www.usa.siemens.com/iccatalog](http://www.usa.siemens.com/iccatalog)

**Industry Mall (Online ordering system)**

<https://mall.industry.siemens.com/mall/en/us/Catalog/product?mlfb=US2:CLM1B06208>

**Service&Support (Manuals, Certificates, Characteristics, FAQs,...)**

<https://support.industry.siemens.com/cs/US/en/ps/US2:CLM1B06208>

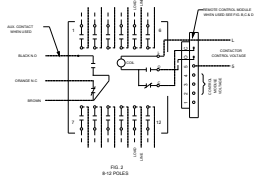
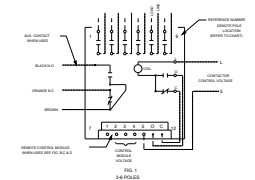
**Image database (product images, 2D dimension drawings, 3D models, device circuit diagrams, EPLAN macros, ...)**

[http://www.automation.siemens.com/bilddb/cax\\_de.aspx?mlfb=US2:CLM1B06208&lang=en](http://www.automation.siemens.com/bilddb/cax_de.aspx?mlfb=US2:CLM1B06208&lang=en)

**Certificates/approvals**

<https://support.industry.siemens.com/cs/US/en/ps/US2:CLM1B06208/certificate>





**CONTACT PAIR LOCATION CHART**

PAIR	LOCATION
1	1 & 2
2	3 & 4
3	5 & 6
4	7 & 8
5	9 & 10
6	11 & 12

**AUXILIARY CONTACT RATINGS**  
 ACC. CLAMPER (SPST)  
 ACC. CLAMPER (SPDT)

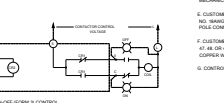
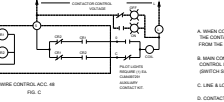
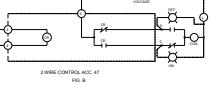
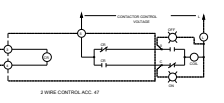
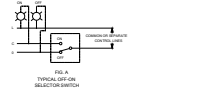
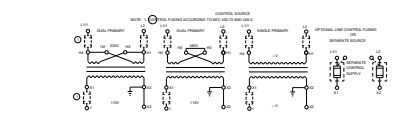
**MAIN CONTACT MAINLINE VOLTAGE RATINGS OPEN OR CLOSED**

POLES	1 FOR 1/2 AC	2 FOR 1/2 AC	3 FOR 1/2 AC	4 FOR 1/2 AC
250V AC	250 AC	250 AC	250 AC	250 AC
277V AC	277 AC	277 AC	277 AC	277 AC
480V AC	480 AC	480 AC	480 AC	480 AC

**20 AMP. DC**  
 200V DC MAX. 2 POLES IN SERIES  
 100V DC MAX. 4 POLES IN SERIES

**SWITCH IS SUITABLE FOR USE IN A CIRCUIT**  
 CAPABLE OF INTERRUPTING NOT MORE THAN THE  
 RATED INTERRUPTING CAPACITY AT THE NOMINAL  
 VOLTAGE SHOWN. EXCEEDING THESE LIMITS MAY  
 BE A HAZARDOUS CONDITION. THESE LIMITS APPLY  
 TO ALL CIRCUITS UNLESS OTHERWISE SPECIFIED  
 IN THE DATA SHEET. THESE LIMITS APPLY TO  
 ALL CIRCUITS UNLESS OTHERWISE SPECIFIED  
 IN THE DATA SHEET.

AMPERES	VOLTS
20	250
10	480
10	600



**CONNECTIONS TO CONTROL MODULES**

MODULE TERMINAL	CONNECT TO
1	NOT USED
2	CONTROL STOP FOR ACC. 47 & 49
3	CONTROL STOP FOR ACC. 47 & 49
4	MODULE CONTROL VOLTAGE
5	STOP BUTTON CONTACT (N.C.)
6	STOP BUTTON CONTACT (N.C.)
7	STOP BUTTON CONTACT (N.C.)
8	STOP BUTTON CONTACT (N.C.)
9	STOP BUTTON CONTACT (N.C.)
10	STOP BUTTON CONTACT (N.C.)
11	STOP BUTTON CONTACT (N.C.)
12	STOP BUTTON CONTACT (N.C.)

\* FOR 24 POLE CONTROL MODULES  
 CONNECT TO TERMINAL 8 TO NEGATIVE (-)

- GENERAL NOTES**
- WHEN CONTACTOR & LINE VOLTAGE ARE THE SAME, THE CONTACTOR CONTROL VOLTAGE LINE SHOULD BE DERIVED FROM THE LINE POLES OF THE CONTACTOR SWITCH.
  - MAIN CONTACTS ARE SHOWN IN OPEN POSITION WITH CONTROL LINE DE-ENERGIZED. SEE RATINGS BELOW SWITCH (SHIPPED WITH CONTACTS CLOSED).
  - LINE & LOAD TERMINALS ARE INTERCHANGEABLE.
  - CONTACTS ARE SINGLE THROW DOUBLE BREAK, WITH MECHANICALLY INTERLOCKED SINGLE COIL OPERATOR MECHANISM. FULLY INTERLOCKED & CLOSED POSITIONS.
  - CUSTOMER CONNECTIONS TO LINE & LOAD WILL ACCEPT 90° BEND TO TERMINAL CONTACTS. TORQUE LINE POLE CONNECTION TO 18 IN. LB.
  - CUSTOMER CONNECTIONS TO ELECTRONIC MODULES (ACC. 47, 48, 49) WILL ACCEPT 90° BEND TO TORQUE COUPLER WIRE. TORQUE CONTROL TERMINALS TO 20 IN. LB.
  - CONTROL MODULE VOLTAGE SUPPLIED BY CUSTOMER.

24306100401

last modified:

05/20/2019