

Mechanically held lighting contactor, Contactor amp rating 20Amp  
 0NC \_ 3NO poles, 110-120V 50/60HZ coil, Non-combination type,  
 Encl NEMA type 4X 304 S-steel Water/dust tight noncorrosive



Figure similar

General technical data	
Weight [lb]	8 lb
Height x Width x Depth [in]	16 × 13 × 6 in
Protection against electrical shock	NA for enclosed products
Installation altitude [ft] at height above sea level maximum	6560 ft
Country of origin	USA

Contactor	
Number of NO contacts for main contacts	3
Number of NC contacts for main contacts	0
Operating voltage for main current circuit at AC at 60 Hz maximum	600 V
Contact rating of the main contacts of lighting contactor	
<ul style="list-style-type: none"> <li>• at tungsten (1 pole per 1 phase) rated value</li> <li>• at tungsten (2 poles per 1 phase) rated value</li> <li>• at tungsten (3 poles per 3 phases) rated value</li> </ul>	<p>20A @250V 1p 1ph</p> <p>20A @250V 2p 1ph</p> <p>20A @250V 3p 3ph</p>

- at ballast (1 pole per 1 phase) rated value
- at ballast (2 poles per 1 phase) rated value
- at ballast (3 poles per 3 phases) rated value
- at resistive load (1 pole per 1 phase) rated value
- at resistive load (2 poles per 1 phase) rated value
- at resistive load (3 poles per 3 phases) rated value

20A @347V 1p 1ph  
 20A @600V 2p 1ph  
 20A @600V 3p 3ph  
 30A @347V 1p 1ph  
  
 30A @600V 2p 1ph  
  
 30A @600V 3p 3ph

### Auxiliary contact

Number of NC contacts for auxiliary contacts	0
Number of NO contacts for auxiliary contacts	0
Number of total auxiliary contacts maximum	4
Contact rating of auxiliary contacts of contactor according to UL	NA

### Coil

Type of voltage of the control supply voltage	AC
Control supply voltage	
<ul style="list-style-type: none"> <li>• at DC rated value</li> <li>• at AC at 60 Hz rated value</li> <li>• at AC at 50 Hz rated value</li> </ul>	0 ... 0 V 110 ... 120 V 110 ... 120 V
Apparent pick-up power of magnet coil at AC	600 V·A
Apparent holding power of magnet coil at AC	6 V·A
Operating range factor control supply voltage rated value of magnet coil	0.85 ... 1.1

### Enclosure

Degree of protection NEMA rating of the enclosure	NEMA 4X 304 stainless steel enclosure
Design of the housing	Dust-tight, watertight & corrosion resistant

### Mounting/wiring

(mounting position)	Vertical
(mounting type)	Surface mounting and installation
Type of electrical connection for supply voltage line-side	Screw-type terminals
Tightening torque [lbf·in] for supply	18 ... 18 lbf·in
Type of connectable conductor cross-sections at line-side at AWG conductors single or multi-stranded	2x (18 ... 10 AWG)
Temperature of the conductor for supply maximum permissible	75 °C
Material of the conductor for supply	CU
Type of electrical connection for load-side outgoing feeder	Screw-type terminals
Tightening torque [lbf·in] for load-side outgoing feeder	18 ... 18 lbf·in

Type of connectable conductor cross-sections at AWG conductors for load-side outgoing feeder single or multi-stranded	2x (18 ... 10 AWG)
Temperature of the conductor for load-side outgoing feeder maximum permissible	75 °C
Material of the conductor for load-side outgoing feeder	CU
Type of electrical connection of magnet coil	Screw-type terminals
Tightening torque [lbf-in] at magnet coil	18 ... 18 lbf-in
Type of connectable conductor cross-sections of magnet coil at AWG conductors single or multi-stranded	2x (18 ... 10 AWG)
Temperature of the conductor at magnet coil maximum permissible	75 °C
Material of the conductor at magnet coil	CU

#### Short-circuit current rating

Design of the fuse link for short-circuit protection of the main circuit required	none
Design of the short-circuit trip	Thermal magnetic circuit breaker
Maximum short-circuit current breaking capacity (Icu) <ul style="list-style-type: none"> <li>• at 240 V</li> <li>• at 480 V</li> <li>• at 600 V</li> </ul>	5 kA 5 kA 5 kA

#### Further information

**Industrial Controls - Product Overview (Catalogs, Brochures,...)**

[www.usa.siemens.com/iccatalog](http://www.usa.siemens.com/iccatalog)

**Industry Mall (Online ordering system)**

<https://mall.industry.siemens.com/mall/en/us/Catalog/product?mlfb=US2:CLMSB03120>

**Service&Support (Manuals, Certificates, Characteristics, FAQs,...)**

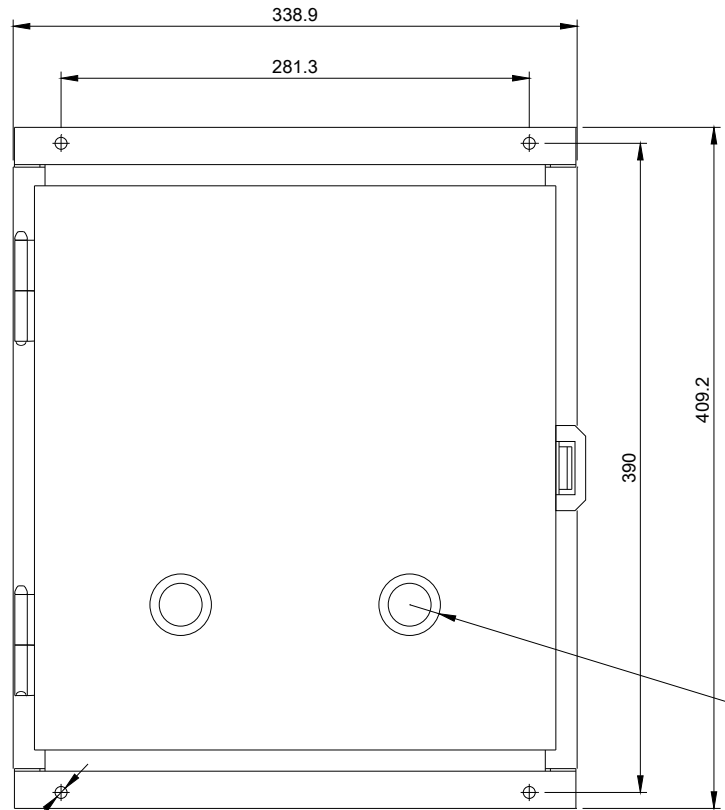
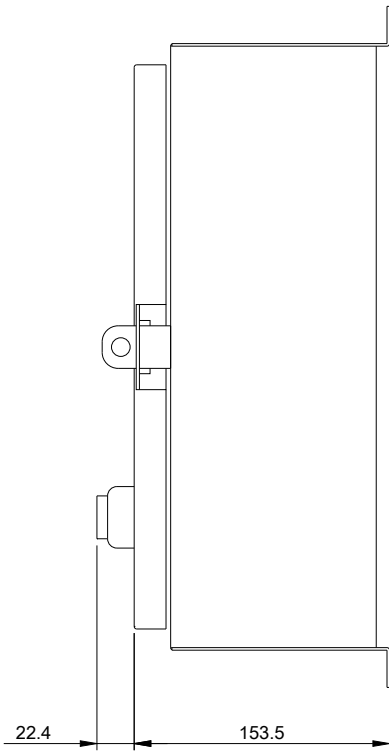
<https://support.industry.siemens.com/cs/US/en/ps/US2:CLMSB03120>

**Image database (product images, 2D dimension drawings, 3D models, device circuit diagrams, EPLAN macros, ...)**

[http://www.automation.siemens.com/bilddb/cax\\_de.aspx?mlfb=US2:CLMSB03120&lang=en](http://www.automation.siemens.com/bilddb/cax_de.aspx?mlfb=US2:CLMSB03120&lang=en)

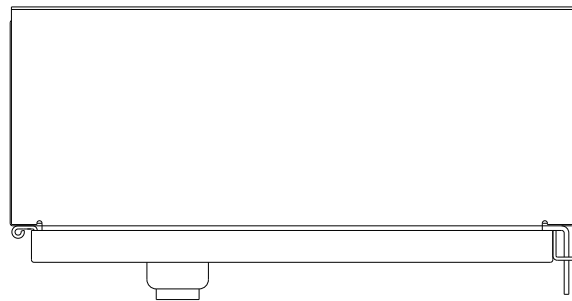
**Certificates/approvals**

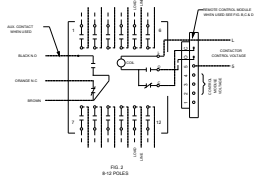
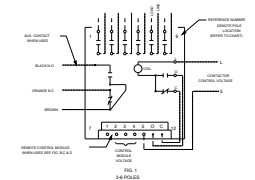
<https://support.industry.siemens.com/cs/US/en/ps/US2:CLMSB03120/certificate>



(4) M7C HOLES

ROOM FOR REVERSING STARTER





**CONTACT PAIR LOCATION CHART**

PAIR	LOCATION
1	1 & 2
2	3 & 4
3	5 & 6
4	7 & 8
5	9 & 10
6	11 & 12

**AUXILIARY CONTACT RATINGS**  
 ACC. CLAMPER (SPST)  
 ACC. CLAMPER (SPDT)

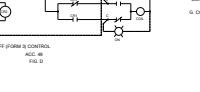
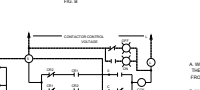
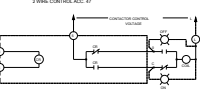
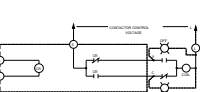
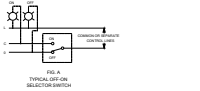
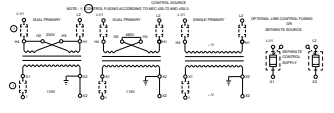
**MAIN CONTACT MAINLINE VOLTAGE RATINGS OPEN OR CLOSED**

POLES	1 FOR 1/2 AC	2 FOR 1/2 AC	3 FOR 1/2 AC	4 FOR 1/2 AC
200V AC	20	20	20	20
277V AC	10	10	10	10
480V AC	5	5	5	5

**20 AMP. AC GENERAL**  
 200V AC MAX. 2 POLES IN SERIES  
 277V AC MAX. 2 POLES IN SERIES

**SWITCH IS SUITABLE FOR USE IN A CIRCUIT CAPABLE OF DEVELOPING NOT MORE THAN THE RATED INTERRUPTING CAPACITY AT THE NOMINAL VOLTAGE SHOWN. SEE THE INSTRUCTIONS BY THE USER MANUAL FOR THE PROPER USE OF THIS SWITCH. A 5 AMP CIRCUIT BREAKER SHOULD BE USED TO PROTECT THE SWITCH FROM OVERCURRENT UNLESS SHOWN OTHERWISE.**

AMPERES	VOLTS
20	250
15	480
10	600



**CONNECTIONS TO CONTROL MODULES**

MODULE TERMINAL	CONNECT TO
1	NOT USED
2	CONTROL STATION FOR ACC. 47
3	CONTROL STATION FOR ACC. 47
4	MODULE CONTROL VOLTAGE
5	CONTROL STATION FOR ACC. 47
6	CONTROL STATION FOR ACC. 47
7	CONTROL STATION FOR ACC. 47
8	CONTROL STATION FOR ACC. 47
9	CONTROL STATION FOR ACC. 47
10	CONTROL STATION FOR ACC. 47
11	CONTROL STATION FOR ACC. 47
12	CONTROL STATION FOR ACC. 47

\* FOR 24-POLE CONTROL MODULES, CONNECT TO TERMINAL 4 TO NEGATIVE (-)

- GENERAL NOTES**
- WHEN CONTACTOR & LINE VOLTAGE ARE THE SAME, THE CONTACTOR CONTROL VOLTAGE LINE SHOULD BE DERIVED FROM THE LINE POLES OF THE CONTACTOR SWITCH.
  - MAIN CONTACTS ARE SHOWN IN OPEN POSITION WITH CONTROL LINE DE-ENERGIZED. SEE RATINGS BELOW SWITCH (SHIPPED WITH CONTACTS CLOSED).
  - LINE & LINE TERMINALS ARE INTERCHANGEABLE.
  - CONTACTS ARE SINGLE THROW DOUBLE BREAK, WITH UNDESIRABLELY ENERGIZED SINGLE COIL OPERATOR MECHANICAL FULLY REVERSE OPEN & CLOSED POSITIONS.
  - CUSTOMER CONNECTIONS TO LINE & LOAD WILL ACCEPT 90° BEND TO TERMINAL CONTACTS. TORQUE LINE POLE CONNECTION TO 18 IN. LB.
  - CUSTOMER CONNECTIONS TO ELECTRONIC MODULE (ACC. 47) AS SHOWN WILL ACCEPT 90° BEND TO TERMINAL CONTACTS. TORQUE LINE POLE CONNECTION TO 18 IN. LB.
  - CONTROL MODULE VOLTAGE SUPPLIED BY CUSTOMER.

24306100401

last modified:

05/20/2019