

Mechanically held lighting contactor, Contactor amp rating 20Amp
 0NC _ 4NO poles, 265-277V 50/60HZ coil, Non-combination type,
 Encl NEMA type 4X 304 S-steel Water/dust tight noncorrosive



Figure similar

General technical data	
Weight [lb]	8 lb
Height x Width x Depth [in]	16 × 13 × 6 in
Protection against electrical shock	NA for enclosed products
Installation altitude [ft] at height above sea level maximum	6560 ft
Country of origin	USA

Contactor	
Number of NO contacts for main contacts	4
Number of NC contacts for main contacts	0
Operating voltage for main current circuit at AC at 60 Hz maximum	600 V
Contact rating of the main contacts of lighting contactor	
<ul style="list-style-type: none"> • at tungsten (1 pole per 1 phase) rated value • at tungsten (2 poles per 1 phase) rated value • at tungsten (3 poles per 3 phases) rated value 	20A @250V 1p 1ph 20A @250V 2p 1ph 20A @250V 3p 3ph

- at ballast (1 pole per 1 phase) rated value
- at ballast (2 poles per 1 phase) rated value
- at ballast (3 poles per 3 phases) rated value
- at resistive load (1 pole per 1 phase) rated value
- at resistive load (2 poles per 1 phase) rated value
- at resistive load (3 poles per 3 phases) rated value

20A @347V 1p 1ph
 20A @600V 2p 1ph
 20A @600V 3p 3ph
 30A @347V 1p 1ph

 30A @600V 2p 1ph

 30A @600V 3p 3ph

Auxiliary contact

Number of NC contacts for auxiliary contacts	0
Number of NO contacts for auxiliary contacts	0
Number of total auxiliary contacts maximum	4
Contact rating of auxiliary contacts of contactor according to UL	NA

Coil

Type of voltage of the control supply voltage	AC
Control supply voltage	
<ul style="list-style-type: none"> • at DC rated value • at AC at 60 Hz rated value • at AC at 50 Hz rated value 	0 ... 0 V 265 ... 277 V 265 ... 277 V
Apparent pick-up power of magnet coil at AC	600 V·A
Apparent holding power of magnet coil at AC	6 V·A
Operating range factor control supply voltage rated value of magnet coil	0.85 ... 1.1

Enclosure

Degree of protection NEMA rating of the enclosure	NEMA 4X 304 stainless steel enclosure
Design of the housing	Dust-tight, watertight & corrosion resistant

Mounting/wiring

(mounting position)	Vertical
(mounting type)	Surface mounting and installation
Type of electrical connection for supply voltage line-side	Screw-type terminals
Tightening torque [lbf·in] for supply	18 ... 18 lbf·in
Type of connectable conductor cross-sections at line-side at AWG conductors single or multi-stranded	2x (18 ... 10 AWG)
Temperature of the conductor for supply maximum permissible	75 °C
Material of the conductor for supply	CU
Type of electrical connection for load-side outgoing feeder	Screw-type terminals
Tightening torque [lbf·in] for load-side outgoing feeder	18 ... 18 lbf·in

Type of connectable conductor cross-sections at AWG conductors for load-side outgoing feeder single or multi-stranded	2x (18 ... 10 AWG)
Temperature of the conductor for load-side outgoing feeder maximum permissible	75 °C
Material of the conductor for load-side outgoing feeder	CU
Type of electrical connection of magnet coil	Screw-type terminals
Tightening torque [lbf-in] at magnet coil	18 ... 18 lbf-in
Type of connectable conductor cross-sections of magnet coil at AWG conductors single or multi-stranded	2x (18 ... 10 AWG)
Temperature of the conductor at magnet coil maximum permissible	75 °C
Material of the conductor at magnet coil	CU

Short-circuit current rating

Design of the fuse link for short-circuit protection of the main circuit required	none
Design of the short-circuit trip	Thermal magnetic circuit breaker
Maximum short-circuit current breaking capacity (Icu) <ul style="list-style-type: none"> • at 240 V • at 480 V • at 600 V 	5 kA 5 kA 5 kA

Further information

Industrial Controls - Product Overview (Catalogs, Brochures,...)

www.usa.siemens.com/iccatalog

Industry Mall (Online ordering system)

<https://mall.industry.siemens.com/mall/en/us/Catalog/product?mlfb=US2:CLMSB04277>

Service&Support (Manuals, Certificates, Characteristics, FAQs,...)

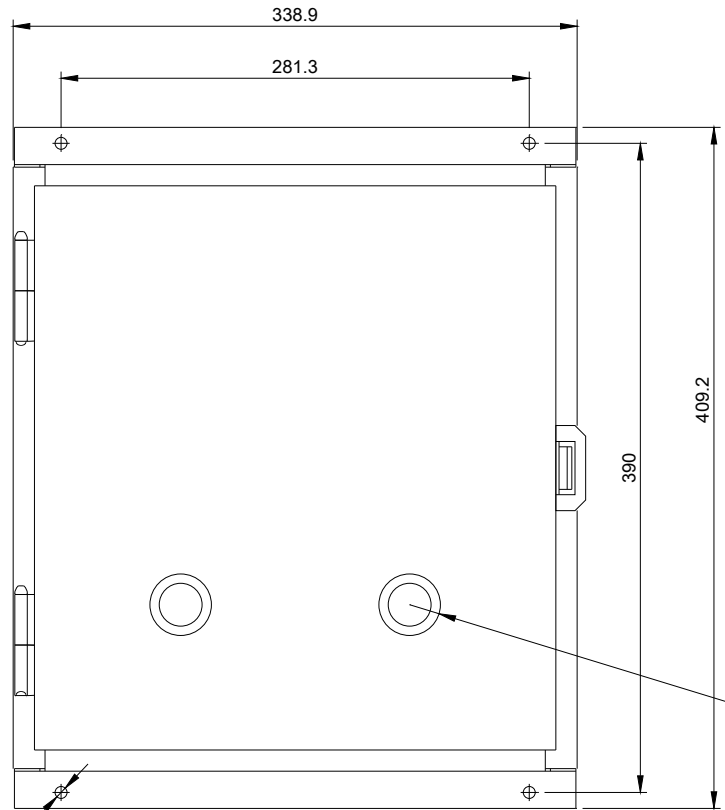
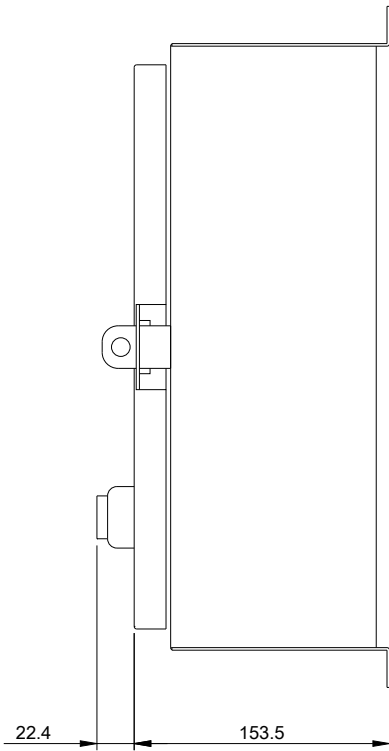
<https://support.industry.siemens.com/cs/US/en/ps/US2:CLMSB04277>

Image database (product images, 2D dimension drawings, 3D models, device circuit diagrams, EPLAN macros, ...)

http://www.automation.siemens.com/bilddb/cax_de.aspx?mlfb=US2:CLMSB04277&lang=en

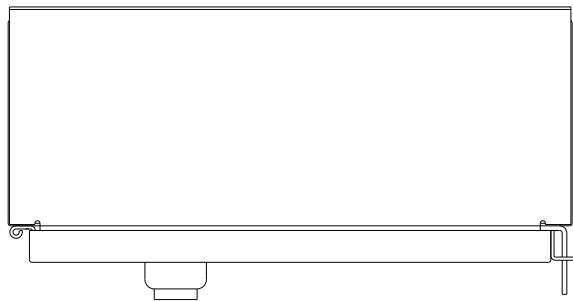
Certificates/approvals

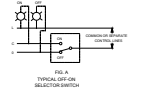
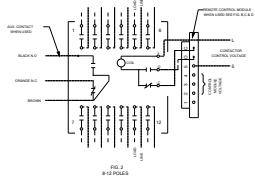
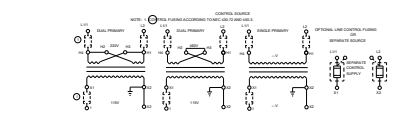
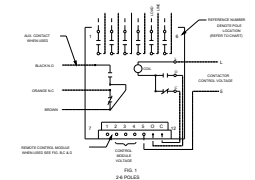
<https://support.industry.siemens.com/cs/US/en/ps/US2:CLMSB04277/certificate>



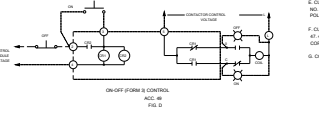
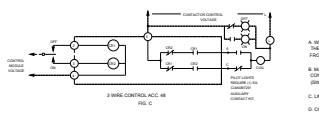
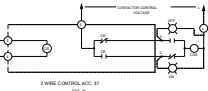
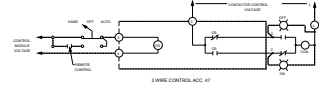
ROOM FOR
REVERSING
STARTER

(4) M7G HOLES





MODULE TERMINAL	CONNECT TO
1	NOT USED
2	CONTROL VOLTAGE FOR ACC. 47 & 49
3	CONTROL VOLTAGE FOR ACC. 47 & 49
4	MODULE CONTROL VOLTAGE
5	CONTROL VOLTAGE FOR ACC. 47 & 49
6	CONTROL VOLTAGE FOR ACC. 47 & 49
7	CONTROL VOLTAGE FOR ACC. 47 & 49
8	CONTROL VOLTAGE FOR ACC. 47 & 49



POLE	LOCATION
1	1 & 2
2	3 & 4
3	5 & 6
4	7 & 8
5	9 & 10
6	11 & 12
7	13 & 14
8	15 & 16
9	17 & 18
10	19 & 20
11	21 & 22
12	23 & 24

AUXILIARY CONTACT RATINGS
 ACC. CLAMPER (SPST)
 ACC. CLAMPER (SPDT)
 10A, 250V AC
 5A, 250V AC
 3A, 250V AC

MAIN CONTACT MAINLINE VOLTAGE RATINGS OPEN OR CLOSED	POLE POSITION	1 FOR 1/2 INCH	2 FOR 1/2 INCH	3 FOR 1/2 INCH	4 FOR 1/2 INCH	5 FOR 1/2 INCH	6 FOR 1/2 INCH	7 FOR 1/2 INCH	8 FOR 1/2 INCH	9 FOR 1/2 INCH	10 FOR 1/2 INCH	11 FOR 1/2 INCH	12 FOR 1/2 INCH
250V AC	250V AC	250V AC	250V AC	250V AC	250V AC	250V AC	250V AC	250V AC	250V AC	250V AC	250V AC	250V AC	250V AC
277V AC	277V AC	277V AC	277V AC	277V AC	277V AC	277V AC	277V AC	277V AC	277V AC	277V AC	277V AC	277V AC	277V AC
480V AC	480V AC	480V AC	480V AC	480V AC	480V AC	480V AC	480V AC	480V AC	480V AC	480V AC	480V AC	480V AC	480V AC

STOP-3 SWITCHES FOR USE IN A CIRCUIT
 CAPABLE OF INTERRUPTING NOT MORE THAN THE
 RATED INTERRUPTING CAPACITY OF THE SWITCHING
 DEVICE. STOP-3 SWITCHES SHALL BE INSTALLED BY
 A 30 AMP CIRCUIT BREAKER WITH A 30 AMP
 INTERRUPTING RATING OF NOT LESS THAN
 THE RATED INTERRUPTING CAPACITY OF THE
 SWITCHING DEVICE.

ORDERING CODE	DESCRIPTION
24306100401	24 POLES
24306100402	24 POLES
24306100403	24 POLES
24306100404	24 POLES
24306100405	24 POLES
24306100406	24 POLES
24306100407	24 POLES
24306100408	24 POLES
24306100409	24 POLES
24306100410	24 POLES
24306100411	24 POLES
24306100412	24 POLES
24306100413	24 POLES
24306100414	24 POLES
24306100415	24 POLES
24306100416	24 POLES
24306100417	24 POLES
24306100418	24 POLES
24306100419	24 POLES
24306100420	24 POLES
24306100421	24 POLES
24306100422	24 POLES
24306100423	24 POLES
24306100424	24 POLES
24306100425	24 POLES
24306100426	24 POLES
24306100427	24 POLES
24306100428	24 POLES
24306100429	24 POLES
24306100430	24 POLES
24306100431	24 POLES
24306100432	24 POLES
24306100433	24 POLES
24306100434	24 POLES
24306100435	24 POLES
24306100436	24 POLES
24306100437	24 POLES
24306100438	24 POLES
24306100439	24 POLES
24306100440	24 POLES
24306100441	24 POLES
24306100442	24 POLES
24306100443	24 POLES
24306100444	24 POLES
24306100445	24 POLES
24306100446	24 POLES
24306100447	24 POLES
24306100448	24 POLES
24306100449	24 POLES
24306100450	24 POLES

GENERAL NOTES
 A. WHEN CONTACTOR & LINE VOLTAGE ARE THE SAME,
 THE CONTACTOR CONTROL VOLTAGE LINE SHOULD BE
 TAKEN FROM THE LINE POLES OF THE CONTACTOR SWITCH.
 B. MAIN CONTACTS ARE SHOWN IN OPEN POSITION WITH
 CONTROL LINE DE-ENERGIZED. SEE RATINGS BELOW
 SWITCH (SHIPPED WITH CONTACTS CLOSED).
 C. LINE & LINE TERMINALS ARE INTERCHANGEABLE.
 D. CONTACTS ARE SINGLE THROW DOUBLE BREAK, WITH
 INDICATOR VOLTAGE INDICATED BY A RED OPERATOR
 MECHANICALLY LINKED TO CONTACTS & CLOSED POSITIONERS.
 E. CUSTOMER CONNECTIONS TO LINE & LOAD WILL ACCEPT
 THE NUMBER OF TERMINALS SHOWN. TERMINAL LINE
 POLE CONNECTION TO 18 & 19.
 F. CUSTOMER CONNECTIONS TO ELECTRONIC MODULES (ACC.
 47 & 49) WILL ACCEPT ONLY 24VDC TO 250VDC
 CONTROL VOLTAGE. TERMINAL CONNECTIONS TO 21 & 22
 G. CONTROL MODULE VOLTAGE SUPPLIED BY CUSTOMER.

24306100401

last modified:

05/20/2019