

contactor-LTG-combo,NF,20A,N12, contactor-LTG-combo,NF,20A,N12,



Figure similar

General technical data	
Weight [lb]	35 lb
Height x Width x Depth [in]	24 × 11 × 8 in
Protection against electrical shock	NA for enclosed products
Installation altitude [ft] at height above sea level maximum	6560 ft
Country of origin	USA

Contactor	
Number of NO contacts for main contacts	3
Number of NC contacts for main contacts	0
Operating voltage for main current circuit at AC at 60 Hz maximum	600 V
Contact rating of the main contacts of lighting contactor	
<ul style="list-style-type: none"> at tungsten (1 pole per 1 phase) rated value 	20A @250V 1p 1ph
<ul style="list-style-type: none"> at tungsten (2 poles per 1 phase) rated value 	20A @250V 2p 1ph
<ul style="list-style-type: none"> at tungsten (3 poles per 3 phases) rated value 	20A @250V 3p 3ph

- at ballast (1 pole per 1 phase) rated value
- at ballast (2 poles per 1 phase) rated value
- at ballast (3 poles per 3 phases) rated value
- at resistive load (1 pole per 1 phase) rated value
- at resistive load (2 poles per 1 phase) rated value
- at resistive load (3 poles per 3 phases) rated value

20A @347V 1p 1ph
 20A @600V 2p 1ph
 20A @600V 3p 3ph
 30A @347V 1p 1ph
 30A @600V 2p 1ph
 30A @600V 3p 3ph

Auxiliary contact

Number of NC contacts for auxiliary contacts	0
Number of NO contacts for auxiliary contacts	0
Number of total auxiliary contacts maximum	4
Contact rating of auxiliary contacts of contactor according to UL	NA

Coil

Type of voltage of the control supply voltage	AC
Control supply voltage	
<ul style="list-style-type: none"> • at DC rated value • at AC at 60 Hz rated value • at AC at 50 Hz rated value 	0 ... 0 V 110 ... 120 V 110 ... 120 V
Apparent pick-up power of magnet coil at AC	600 V·A
Apparent holding power of magnet coil at AC	6 V·A
Operating range factor control supply voltage rated value of magnet coil	0.85 ... 1.1

Disconnect Switch

Rated response values of switch disconnecter	30A / 600V
Design of fuse holder	non-fusible
Operating class of the fuse link	non-fusible

Enclosure

Degree of protection NEMA rating of the enclosure	NEMA 12 enclosure
Design of the housing	Dust tight and drip proof for indoors

Mounting/wiring

(mounting position)	Vertical
(mounting type)	Surface mounting and installation
Type of electrical connection for supply voltage line-side	Box lug
Tightening torque [lbf·in] for supply	35 ... 35 lbf·in
Type of connectable conductor cross-sections at line-side at AWG conductors single or multi-stranded	1x (14 ... 2 AWG)
Temperature of the conductor for supply maximum permissible	75 °C

Material of the conductor for supply	AL or CU
Type of electrical connection for load-side outgoing feeder	Screw-type terminals
Tightening torque [lbf·in] for load-side outgoing feeder	18 ... 18 lbf·in
Type of connectable conductor cross-sections at AWG conductors for load-side outgoing feeder single or multi-stranded	2x (18 ... 10 AWG)
Temperature of the conductor for load-side outgoing feeder maximum permissible	75 °C
Material of the conductor for load-side outgoing feeder	CU
Type of electrical connection of magnet coil	Screw-type terminals
Tightening torque [lbf·in] at magnet coil	18 ... 18 lbf·in
Type of connectable conductor cross-sections of magnet coil at AWG conductors single or multi-stranded	2x (18 ... 10 AWG)
Temperature of the conductor at magnet coil maximum permissible	75 °C
Material of the conductor at magnet coil	CU

Short-circuit current rating

Design of the fuse link for short-circuit protection of the main circuit required	5kA@600V
---	----------

Further information

Industrial Controls - Product Overview (Catalogs, Brochures,...)

www.usa.siemens.com/iccatalog

Industry Mall (Online ordering system)

<https://mall.industry.siemens.com/mall/en/us/Catalog/product?mlfb=US2:CMNB24120>

Service&Support (Manuals, Certificates, Characteristics, FAQs,...)

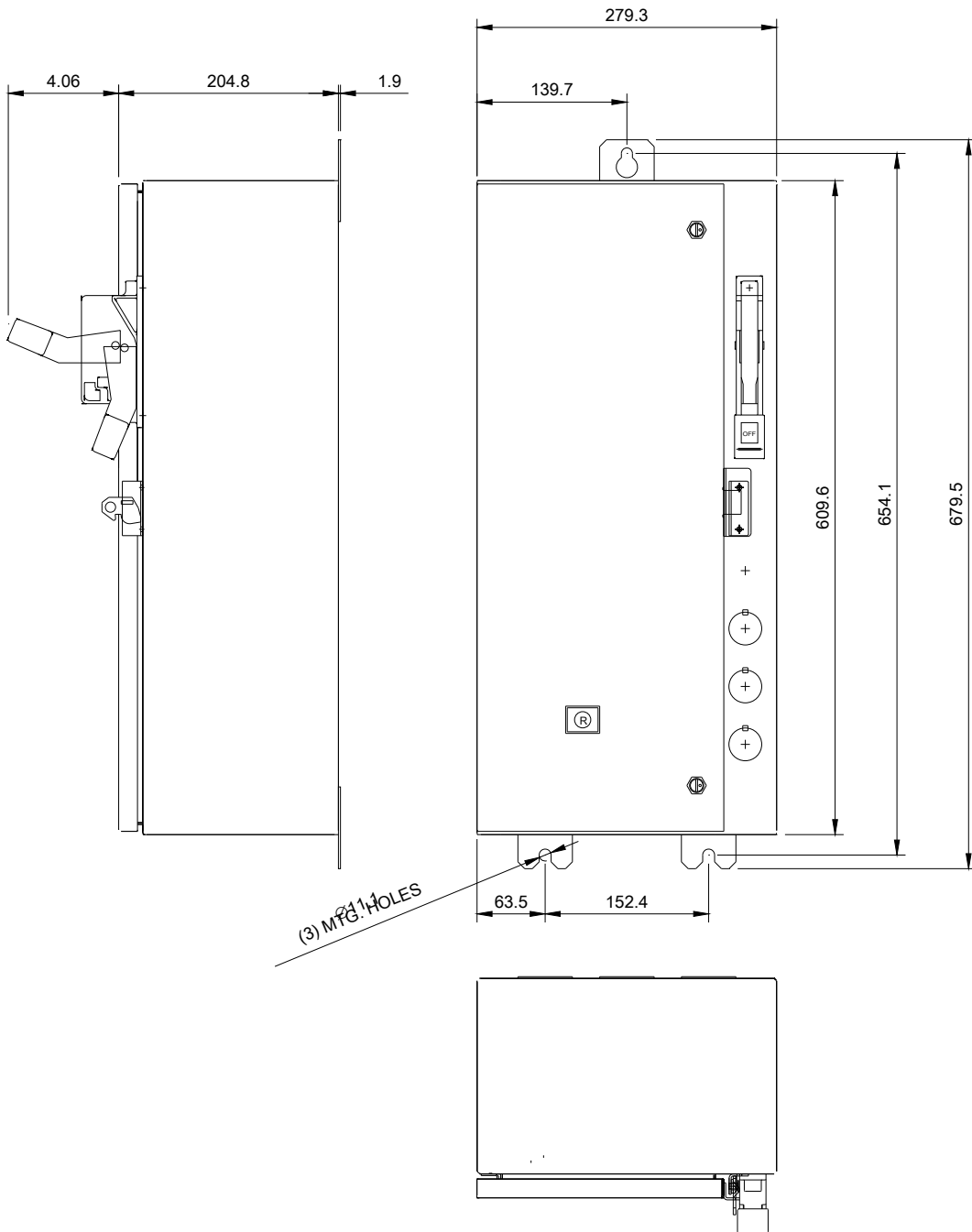
<https://support.industry.siemens.com/cs/US/en/ps/US2:CMNB24120>

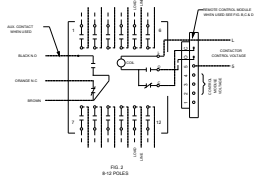
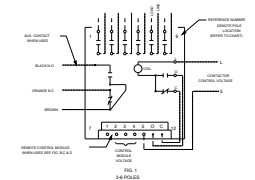
Image database (product images, 2D dimension drawings, 3D models, device circuit diagrams, EPLAN macros, ...)

http://www.automation.siemens.com/bilddb/cax_de.aspx?mlfb=US2:CMNB24120&lang=en

Certificates/approvals

<https://support.industry.siemens.com/cs/US/en/ps/US2:CMNB24120/certificate>





CONTACT FILE LOCATION CHART

POLE	LOCATION
1	1 & 11
2	2 & 12
3	3 & 9
4	4 & 10
5	5 & 8
6	6 & 7
7	7 & 6
8	8 & 5
9	9 & 2
10	10 & 3
11	11 & 1
12	12 & 4

AUXILIARY CONTACT RATINGS
 ACC. CUMULATIVE (SPST)
 ACC. CUMULATIVE (SPDT)

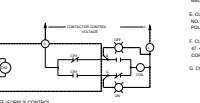
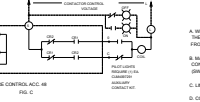
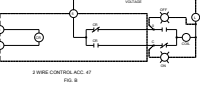
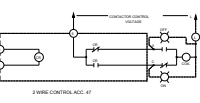
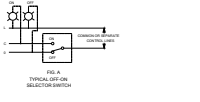
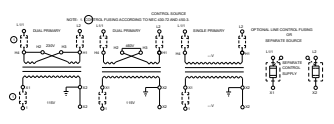
MAIN CONTACT MAINLINE VOLTAGE RATINGS OPEN OR CLOSED

POLES	1 FOR 1/2 AC	2 FOR 1/2 AC	3 FOR 1/2 AC	4 FOR 1/2 AC	5 FOR 1/2 AC	6 FOR 1/2 AC	7 FOR 1/2 AC	8 FOR 1/2 AC	9 FOR 1/2 AC	10 FOR 1/2 AC	11 FOR 1/2 AC	12 FOR 1/2 AC
250V AC	250V AC	250V AC	250V AC	250V AC	250V AC	250V AC	250V AC	250V AC	250V AC	250V AC	250V AC	250V AC
277V AC	277V AC	277V AC	277V AC	277V AC	277V AC	277V AC	277V AC	277V AC	277V AC	277V AC	277V AC	277V AC
380V AC	380V AC	380V AC	380V AC	380V AC	380V AC	380V AC	380V AC	380V AC	380V AC	380V AC	380V AC	380V AC

20 AMP. DC GENERAL
 250V DC MAX. 2 POLES IN SERIES
 250V DC MAX. 2 POLES IN SERIES

SWITCH IS SUITABLE FOR USE IN A CIRCUIT

CHARACTERISTIC	250V AC	277V AC	380V AC
250V AC	250	250	250
277V AC	400	400	400
380V AC	600	600	600



CONNECTIONS TO CONTROL MODULES

MODULE TERMINAL	CONNECT TO
1	NOT USED
2	CONTROL STATION FOR ACC. 47 & 49
3	CONTROL STATION FOR ACC. 47 & 49
4	MODULE CONTROL VOLTAGE
5	CONTROL STATION FOR ACC. 47 & 49
6	CONTROL STATION FOR ACC. 47 & 49
7	CONTROL STATION FOR ACC. 47 & 49
8	CONTROL STATION FOR ACC. 47 & 49
9	CONTROL STATION FOR ACC. 47 & 49
10	CONTROL STATION FOR ACC. 47 & 49
11	CONTROL STATION FOR ACC. 47 & 49
12	CONTROL STATION FOR ACC. 47 & 49

* FOR 24-POLE CONTROL MODULES CONNECT TO TERMINAL 8 TO NEGATIVE (-)

- GENERAL NOTES**
- WHEN CONTACTOR & LINE VOLTAGE ARE THE SAME, THE CONTACTOR CONTROL VOLTAGE LINE SHOULD BE DERIVED FROM THE LINE POLES OF THE CONTACTOR SWITCH.
 - MAIN CONTACTS ARE SHOWN IN OPEN POSITION WITH CONTROL LINE DE-ENERGIZED. SEE RATINGS BELOW SWITCH (SHIPPED WITH CONTACTS CLOSED).
 - LINE & LINE TERMINALS ARE INTERCHANGEABLE.
 - CONTACTS ARE SINGLE THROW DOUBLE BREAK, WITH MECHANICALLY INTERLOCKED SINGLE COIL OPERATOR MECHANICALLY FULLY INTERLOCKED & CLOSED POSITIONS.
 - CUSTOMER CONNECTIONS TO LINE & LOAD WILL ACCEPT 60 Hz. 50 Hz. WILL ACCEPT ONLY IF 50 Hz. IS SPECIFIED. TYPICAL CONTROL TERMINALS TO 20-12.
 - CUSTOMER CONNECTIONS TO ELECTRONIC MODULES (ACC. 47-49) WILL ACCEPT ONLY IF 24VDC IS SPECIFIED. TYPICAL CONTROL TERMINALS TO 20-12.
 - CONTROL MODULE VOLTAGE SUPPLIED BY CUSTOMER.

24306100401

last modified:

05/20/2019