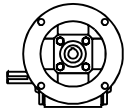


Style Q
C-Face Quilled – Basic Unit

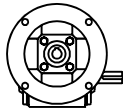
Style Q C-Face Quilled Worm Gear Reducers

Part Number ★	C.D.	NEMA Frame	A	B	C	D	E	F	H	J	K	L	M	N	P	R
SS175Q56	1.75	56C	4.81	3.38	4.19	2.75	2.09	1.38	2.06	4.38	5.75	2.75	6.72	4.31	3.81	3.25
SS175Q140	1.75	143/145TC	4.81	3.38	4.19	2.75	2.09	1.38	2.06	4.38	5.75	2.75	6.72	4.31	3.81	3.25
SS206Q56	2.06	56C	5.50	3.75	5.00	2.88	2.50	1.44	2.28	4.75	6.38	3.00	7.29	4.69	4.34	3.25
SS206Q140	2.06	143/145TC	5.50	3.75	5.00	2.88	2.50	1.44	2.28	4.75	6.38	3.00	7.29	4.69	4.34	3.25
SS262Q56	2.62	56C	7.12	4.44	6.38	3.38	3.19	1.69	2.94	5.69	8.00	3.69	8.71	5.62	5.57	3.25
SS262Q140	2.62	143/145TC	7.12	4.44	6.38	3.38	3.19	1.69	2.94	5.69	8.00	3.69	8.71	5.62	5.57	3.25

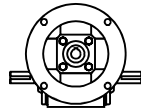
Assembly Drawing and Sample of Components



SS175Q56L10



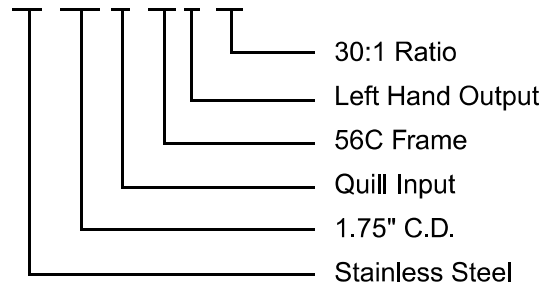
SS175Q56R10

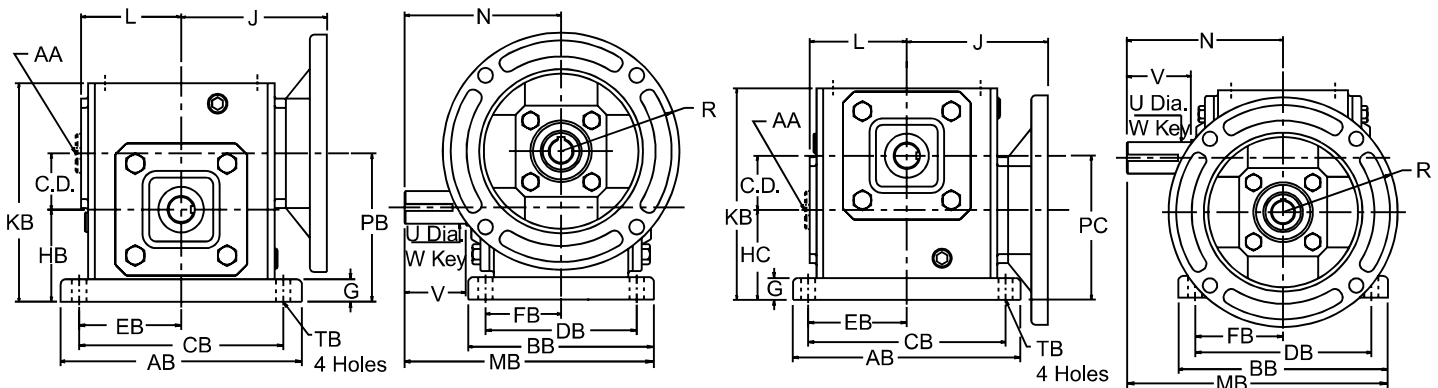


SS175Q56LR10

Part Number Explanation

SS 175 Q 56 L 30





Note: When mounting Style "QB", interference may occur; use a Riser Block or consult Application Engineering (1 800 626 2093).

Style QT
Worm Top

Style QB
Worm Bottom

Style Q C-Face Quilled Worm Gear Reducers

SS
Raider Plus

N.E.M.A. Frame	T		Input		Output Shaft				Stock Ratios Marked "x"								Wt. Lbs.	Part Number ★	
					U +.000 -.001	V	W Key		5	10	15	20	25	30	40	50			60
	Sq.	Lgth.																	
56C	5/16-18	.61	.625	3/16 X 3/32	.875	1.88	.188	1.38	x	x	x	x	x	x	x	x	x	27.0	SS175Q56
143/145TC	5/16-18	.61	.875	3/16 X 3/32	.875	1.88	.188	1.38	x	x	x	-	-	-	-	-	-	27.0	SS175Q140
56C	3/8-16	.61	.625	3/16 X 3/32	1.000	2.00	.250	1.75	-	x	x	x	x	x	x	x	x	32.0	SS206Q56
143/145TC	3/8-16	.61	.875	3/16 X 3/32	1.000	2.00	.250	1.75	x	x	x	x	-	-	-	-	-	32.0	SS206Q140
56C	3/8-16	.58	.625	3/16 X 3/32	1.125	2.50	.250	2.00	-	x	x	x	x	x	x	x	x	50.0	SS262Q56
143/145TC	3/8-16	.58	.875	3/16 X 3/32	1.125	2.50	.250	2.00	-	x	x	x	x	x	x	x	x	50.0	SS262Q140

Style QT C-Face Quilled Worm Top, Style QB C-Face Quilled Worm Bottom

Part Number	Base Kit ◆	AB	BB	CB	DB	EB	FB	G	HB	HC	KB	MB	PB	PC	TB	Wt. Lbs.
SS175Q	SS175-BK	7.00	5.56	5.75	4.50	2.88	2.25	.69	2.75	2.63	6.44	7.09	4.50	4.38	.44	28.0
SS206Q	SS206-BK	7.69	5.76	6.38	4.69	3.19	2.34	.72	3.00	2.75	7.10	7.57	5.06	4.81	.50	33.5
SS262Q	SS262-BK	9.25	6.50	8.00	5.25	4.00	2.63	.75	3.69	3.19	8.75	8.87	6.31	5.81	.56	52.0

★ To complete Part No. add shaft assembly (L, R, LR) and ratio symbol to size – for example SS175Q56LR10.

◆ Components needed to make assembled reducer must be ordered separately.