

## Heavy Duty Free-Standing Enclosures For Flange-Mounted Disconnects

### Application -

Designed to house most standard type disconnects. For installation information, consult our Installation Manual at [www.saginawcontrol.com](http://www.saginawcontrol.com).

### Construction -

- 0.125" carbon steel.
- Seams continuously welded and ground smooth.
- Flange trough collar around all sides of door opening.
- Body stiffeners in large enclosures for extra rigidity.
- Heavy duty lifting eyes anchor into reinforced top.
- Removable center posts permit easy sub-panel installation.
- Concealed hinges.
- Black zinc die cast coinproof/padlocking handle on main door with black zinc die cast padlocking handle on slave doors.
- 3-point latching mechanism.
- Ends of latch rods have ramp shoes for easier door closing.
- Panel supports.
- Large removable print pockets.
- Oil-resistant gasket.
- Removable panels mount on collar studs.
- Master door is far right-hand door on all enclosures.
- Defeater on master door requires a screwdriver to open.
- Mechanical interlock activated by master door prevents slave doors from being opened first. Doors can be closed in any order.
- Ground stud on door.

**Disconnect switch (or circuit breaker) and operating mechanism are not furnished with enclosure.**

### Finish -

ANSI-61 gray powder coated inside and out. Panels are powder coated white.

### IS3 - Industry Standards -

NEMA Type 3R, 12 & Type 13  
UL Listed Type 3R & 12  
CSA Type 3R & 12  
IEC 60529 IP 55

\*\*\*Special Instructions apply for IS3, IS4 and IS6 to maintain the environmental rating of Type 3R for these parts. See the Special Instructions on the Industry Standards page in the Technical Information Section.

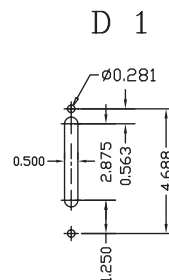
## HEAVY DUTY FREE-STANDING ENCLOSURES FOR FLANGE-MOUNTED DISCONNECTS THREE-DOOR ENCLOSURES

ENCLOSURE PRODUCT CODE A2						SUB-PANEL (P3)			
Catalog No.	Height (A)	Width (B)	Depth (C)	Industry Standard	List Price	Catalog No.	Panel Height (D)	Panel Width (E)	List Price
SCE-72XM3EQ18	72.00	99.50	18.00	IS3	4,116.91	SCE-64P31** & SCE-64P64**	60.00	27.75	Included
SCE-72XM3EW18	72.00	117.50	18.00	IS3	4,634.06	SCE-64P37** & SCE-64P76**	60.00	33.75	Included
SCE-84XM3EW18	84.00	117.50	18.00	IS3	5,166.74	SCE-76P37** & SCE-76P76**	72.00	33.75	Included
SCE-84XM3EW24	84.00	117.50	24.00	IS3	5,227.65	SCE-76P37** & SCE-76P76**	72.00	33.75	Included
SCE-90XM3EW24	90.00	117.50	24.00	IS3	5,765.10	SCE-82P37** & SCE-82P76**	78.00	33.75	Included
SCE-84XM3EW18G	84.00	117.50	18.00	IS3	5,475.55	SCE-76P37GALV** & SCE-76P76GALV**	72.00	33.75	

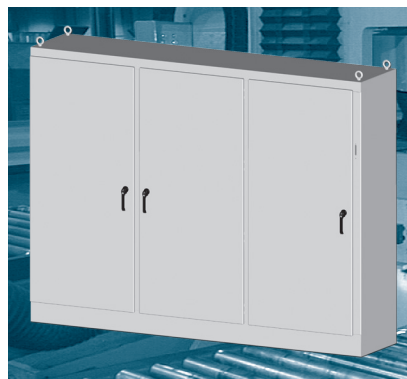
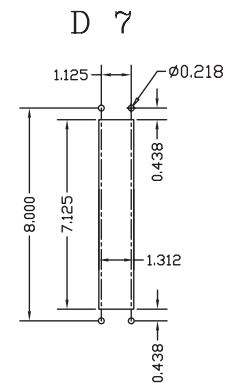
### XM ENCLOSURES

\* Add the letter U to the end of the part number for enclosures with a universal disconnect cutout.

Standard Disconnect cutout provided



Universal Disconnect cutout



\*\*Sub-panel included with enclosure.  
Replacement sub-panels can be ordered.  
Prices found in the accessory section.

Available within 10 working days if not in stock

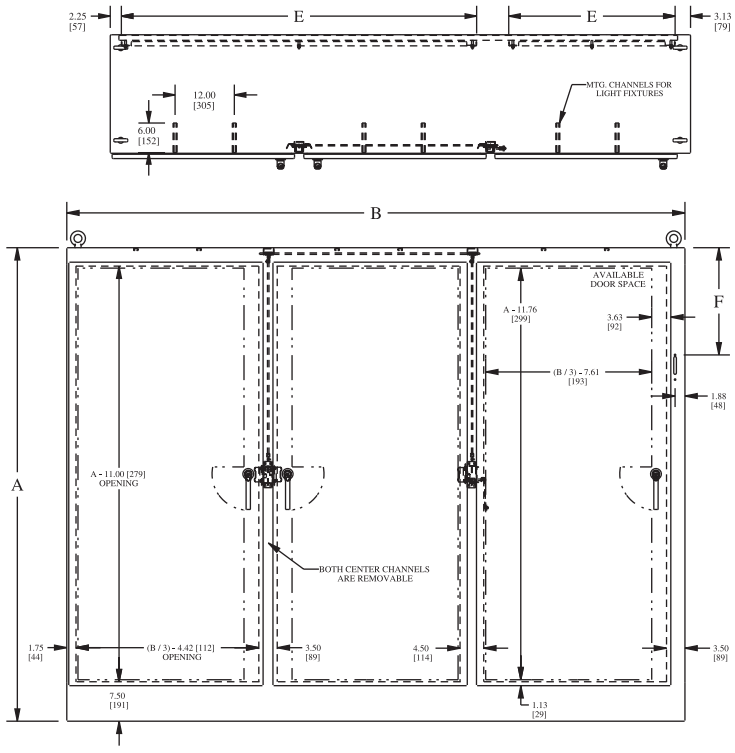
Phone (989) 799-6871  
Fax (989) 799-4524



# FREE-STANDING ENCLOSURES FOR FLANGE-MOUNTED DISCONNECTS

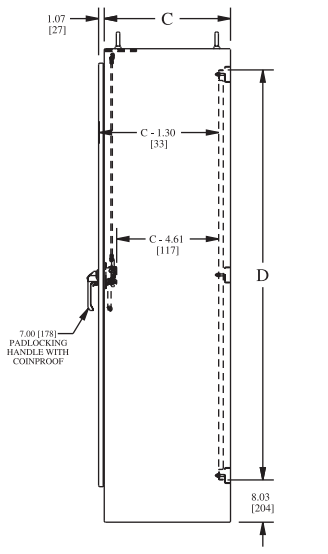
## TECHNICAL DATA

### THREE-DOOR ENCLOSURE

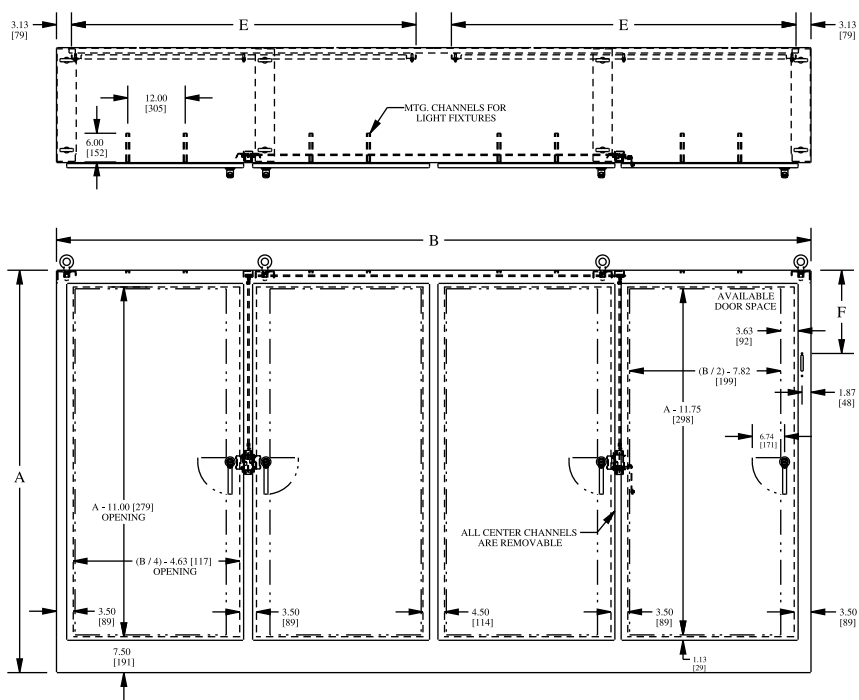


STANDARD DISCONNECTS:  
 F = 11.88 [301,7] when A = 72.00 [1828,8]  
 F = 17.38 [441,4] when A = 84.00 [2133,6]  
 F = 20.38 [517,6] when A = 90.00 [228,6]

U TYPE (Universal) DISCONNECTS:  
 F = 11.88 [301,8] when A = 72  
 F = 17.63 [447,8] when A = 84 & 90



### FOUR-DOOR ENCLOSURE



STANDARD DISCONNECTS:  
 F = 11.88 [301,7] when A = 72.00 [1828,8]  
 F = 17.38 [441,4] when A = 84.00 [2133,6]  
 F = 20.38 [517,6] when A = 90.00 [228,6]

U TYPE (Universal) DISCONNECTS:  
 F = 17.63 [447,8]

