

## Stainless Steel ELJ Consolets & Accessories

### Application -

Designed to house electrical and electronic controls, instruments, and components. Provides protection from dust, dirt, oil and water. Consolets can be mounted on either of two sides to give a control surface inclined 30° or 60°. Can be mounted on desks, machines, or pedestals.

### Construction -

- 0.063" stainless steel Type 304.  
Seams continuously welded and ground smooth.
- Flange trough collar around all sides of enclosure.
- Removable hinges.
- Oil-resistant gasket.
- Standoffs provided for mounting optional sub-panels.
- Cable door stops included on SCE-12C\*\*, SCE-16C\*\* & SCE-20C\*\*
- Black mini quarter turn latches.
- Latches are opened or closed with a screwdriver.
- Ground stud on door and body.
- Mounting holes in back.

### Finish -

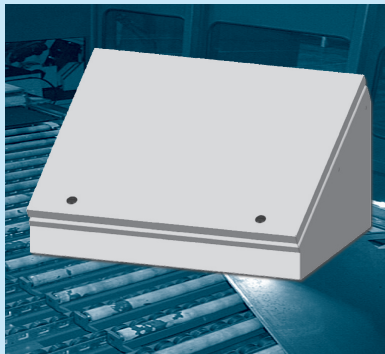
#4 brushed finish on all exterior surfaces.

### Options -

Can be special ordered in Type 316/316L stainless steel.

### IS5 - Industry Standards -

NEMA Type 4, 4X, 12 & Type 13  
UL Listed Type 4, 4X & 12  
CSA Type 4, 4X & 12  
IEC 60529 IP66



## STAINLESS STEEL ELJ CONSOLETS

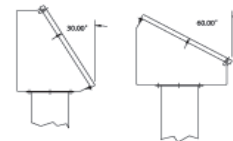
ENCLOSURE PRODUCT CODE A1						SUB-PANEL (P3)			
Catalog No.	Height (A)	Width (B)	Depth (C)	Depth (D)	List Price	Catalog No.	Panel Height (E)	Panel Width (F)	List Price
SCE-8C8ELJSS	8.00	8.00	7.09	7.44	586.80	SCE-8P8C	6.00	6.75	5.27
SCE-8C12ELJSS	8.00	12.00	7.09	7.44	627.16	SCE-8P12C	6.00	10.75	8.39
SCE-8C16ELJSS	8.00	16.00	7.09	7.44	708.62	SCE-8P16C	6.00	14.75	11.50
SCE-8C20ELJSS	8.00	20.00	7.09	7.44	787.24	SCE-8P20C	6.00	18.75	14.63
SCE-12C12ELJSS	12.00	12.00	9.09	10.91	771.99	SCE-12P12C	9.50	10.75	13.28
SCE-12C16ELJSS	12.00	16.00	9.09	10.91	796.98	SCE-12P16C	9.50	14.75	18.22
SCE-12C20ELJSS	12.00	20.00	9.09	10.91	817.75	SCE-12P20C	9.50	18.75	23.16
SCE-12C24ELJSS	12.00	24.00	9.09	10.91	888.79	SCE-12P24C	9.50	22.75	28.09
SCE-16C16ELJSS	16.00	16.00	11.09	14.38	817.75	SCE-16P14	14.75	12.88	19.95
SCE-16C20ELJSS	16.00	20.00	11.09	14.38	888.79	SCE-16P20C	12.88	18.75	31.40
SCE-16C24ELJSS	16.00	24.00	11.09	14.38	957.18	SCE-16P24C	12.88	22.75	38.10
SCE-20C20ELJSS	20.00	20.00	13.09	17.84	957.18	SCE-20P20C	16.38	18.75	39.00
SCE-20C24ELJSS	20.00	24.00	13.09	17.84	1,100.25	SCE-20P24C	16.38	22.75	42.30
SCE-20C30ELJSS	20.00	30.00	13.09	17.84	1,320.04	SCE-20P30C	16.38	28.75	47.32

## CABLE DOOR STOP

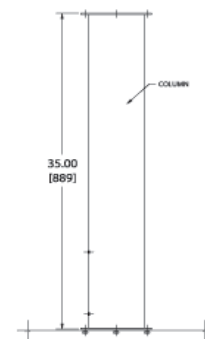
Catalog No.	Description	For use on	Product Code	List Price
SCE-CBL15	15 Inch 135° Door Stop	SCE-12C** & SCE-16C*	P2	13.75
SCE-CBL20	20 Inch 135° Door Stop	SCE-20C**	P2	14.25

## ACCESSORY COLUMNS AND BASES

Catalog No.	Description	Size	Product Code	List Price
SCE-18SBASESS	Stainless Steel Pedestal Base	18.00 x 18.00 x 1.00	P2	424.63
SCE-24SBASESS	Stainless Steel Pedestal Base	24.00 x 24.00 x 1.00	P2	451.45
SCE-44CCOLSS	Stainless Steel Straight Column	4.00 x 4.00	P2	524.13
SCE-66CCOLSS	Stainless Steel Straight Column	6.00 x 6.00	P2	554.52

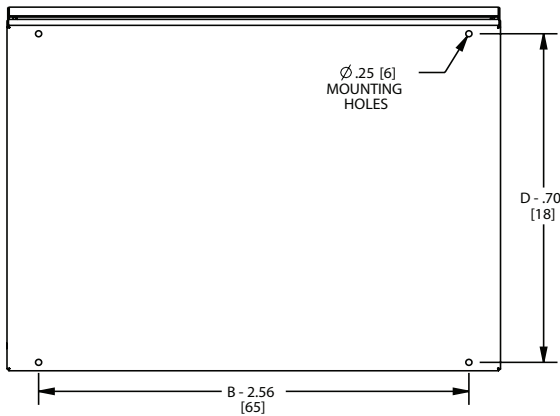
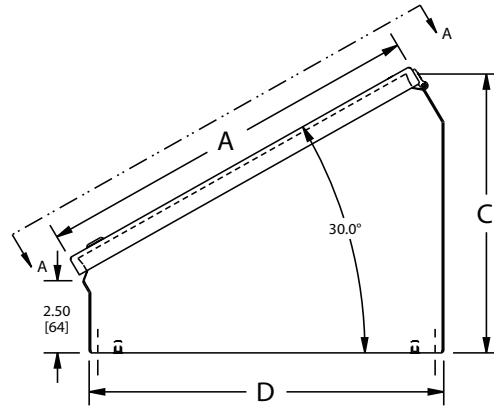
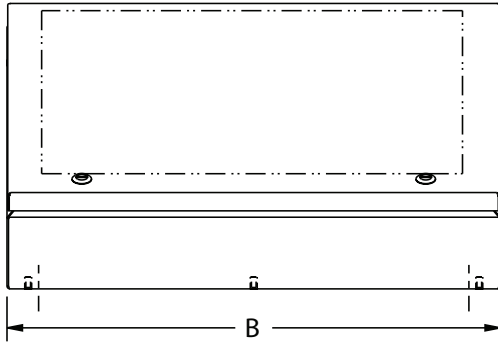


STRAIGHT  
PEDESTAL



# STAINLESS STEEL ELJ CONSOLETS

## TECHNICAL DATA

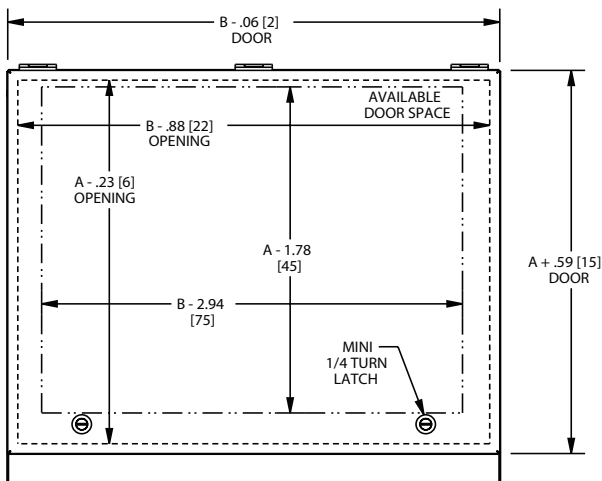


**NOTES:**  
Provisions for cable stops on door and body when "A" >= 12.00 [305]

**LATCH NOTES:**  
One latch centered on door horizontally if "B" is <= 14.00 [356]

Two latches located 3.00 [76] from right & left side of door if "B" is > 14.00 [356]

**SUB-PANEL NOTES:**  
Provisions for sub-panel in bottom.



VIEW A-A