

Stainless Steel Slope Top Work Station

Application -

Designed to house a computer, keyboard, monitor and other additional computer equipment in an industrial environment or an environment which may be regularly hosed down or in very wet or oily conditions. Provides protection from dust, dirt, water and oil. Stainless steel work stations resist corrosion. For installation information, consult our Installation Manual at www.saginawcontrol.com.

Construction -

- 0.075" stainless steel Type 304.
- Seams continuously welded and ground smooth.
- 15 degree sloped top.
- 12.5 degree sloped keyboard desk.
- Oil-resistant gasket.
- Flange trough collar around all sides of door opening.
- Concealed hinge.
- Removable doors.
- Ground studs on door and body.
- Large polycarbonate viewing window in top door.
- Lifting eyes for easy handling.
- Rubber pads with provision for leveling pads on bottom of enclosure.
- Black, quarter turn latches on top door.
- Black 3-point flush swing handle in lower front and back doors.
- Gland plate on lower back of enclosure.
- Mounting channels welded on sides of interior body for mounting optional sub-panels, racks, mounting angles and shelves.
- Provisions for Monitor Mounting System for Slope Top Work Station.
- Pencil edge palm rest.

Finish -

#4 brushed finish on all exterior surfaces.

Options -

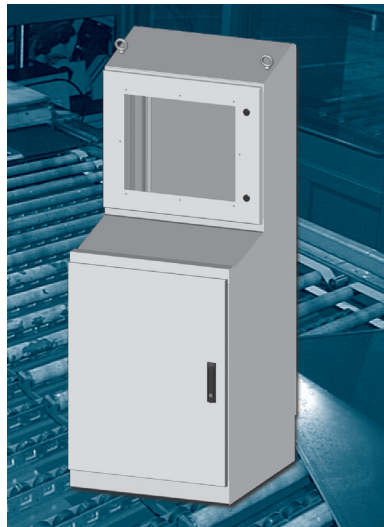
Can be special ordered in Type 316/316L stainless steel.

IS1 - Industry Standards -

NEMA Type 12 & Type 13
UL Listed Type 12
CSA Type 2
IEC 60529 IP55

SLOPE TOP WORK STATION - STAINLESS STEEL

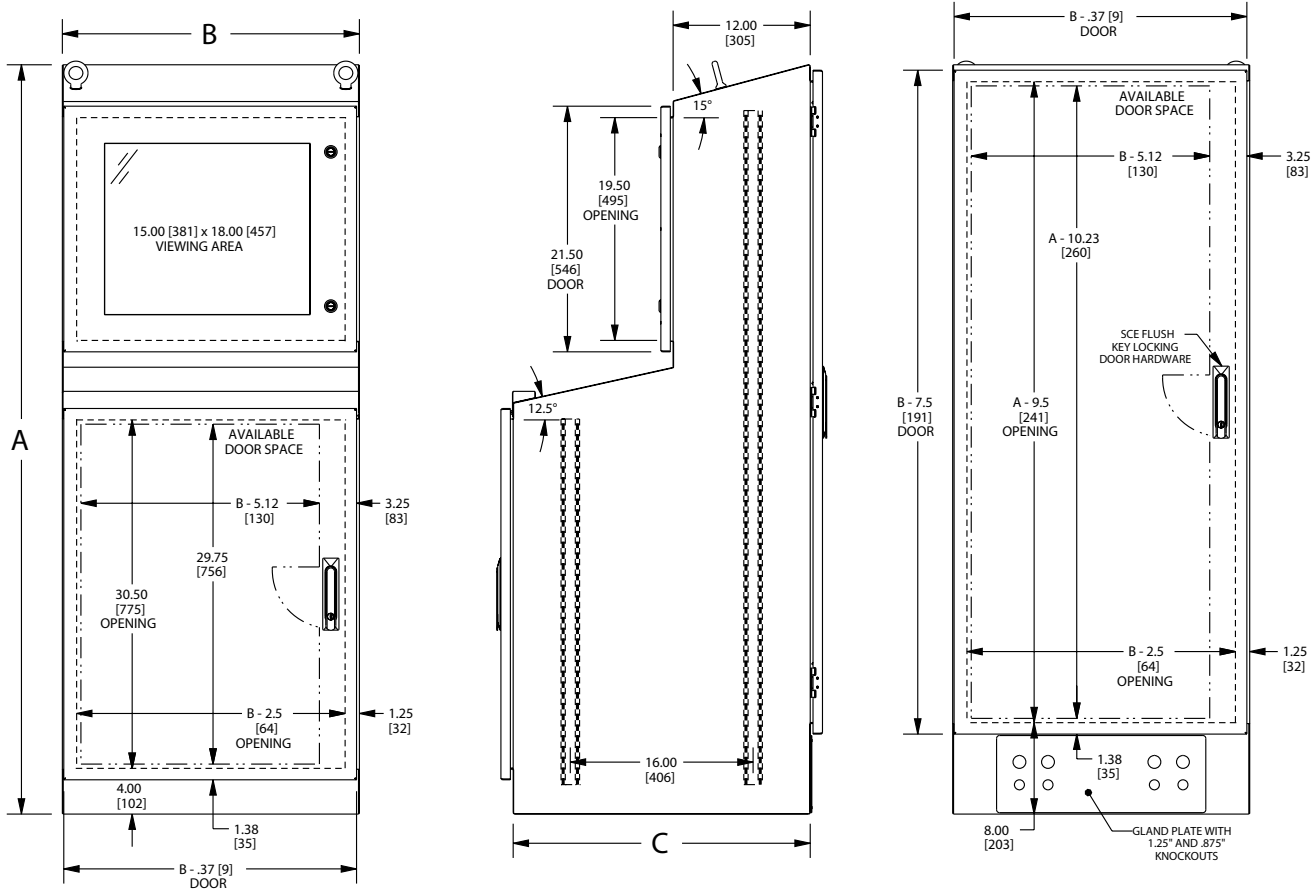
ENCLOSURE PRODUCT CODE S3					
Catalog No.	Height (A)	Width (B)	Depth (C)	Industry Standard	List Price
SCE-66ST2626SSWS	65.59	26.00	26.00	IS1	7,354.91



Phone (989) 799-6871
Fax (989) 799-4524



SLOPE TOP WORK STATION TECHNICAL DATA



5 Operator System Enclosures (Stainless Steel)