

304 & 316 Stainless Steel EnviroLine® Series Junction Enclosures

Application -

Designed to house electrical controls, instruments and components in areas, which may be regularly hosed down or are in very wet or oily conditions. Provides protection from dust, dirt, oil, and water. For outdoor application a drip shield is recommended. For installation information, consult our Installation Manual at www.saginawcontrol.com.

Construction -

- 0.063" stainless steel Type 304 & 316/316L.
- Seams continuously welded and ground smooth.
- Flange trough collar around all sides of door opening.
- Oil-resistant gasket.
- Standoffs provided for mounting optional panels.
- Removable hinge.
- Doors open 180 degrees.
- Black mini quarter turn latches.
- Latches are opened or closed with a screwdriver.
- Sealing washers and hole plugs included.
- Ground stud on door & body.
- Mounting feet are included.
- Optional latches available.

Finish -

#4 brushed finish on all exterior surfaces. Optional sub-panels are powder coated white.

IS5 - Industry Standards -

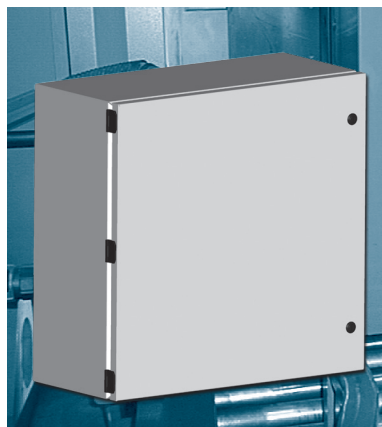
NEMA Type 4, 4X, 12 & Type 13
UL Listed Type 4, 4X & 12
CSA Type 4, 4X & 12
IEC 60529 IP66

304 STAINLESS STEEL ENVIROLINE® SERIES JUNCTION ENCLOSURES

ENCLOSURE PRODUCT CODE S6						SUB-PANEL (P3)			
Catalog No.	Height (A)	Width (B)	Depth (C)	Industry Standard	List Price	Catalog No.	Panel Height (D)	Panel Width (E)	List Price
SCE-604ELJSS	6.00	4.00	4.00	IS5	135.53	SCE-6P4J	5.00	3.00	3.02
SCE-606ELJSS	6.00	6.00	4.00	IS5	169.40	SCE-6P6J	5.00	5.00	3.62
SCE-806ELJSS	8.00	6.00	4.00	IS5	176.82	SCE-8P6J	7.00	5.00	4.17
SCE-8066ELJSS	8.00	6.00	6.00	IS5	202.17	SCE-8P6J	7.00	5.00	4.17
SCE-1008ELJSS	10.00	8.00	4.00	IS5	260.94	SCE-10P8J	9.00	7.00	5.70
SCE-10086ELJSS	10.00	8.00	6.00	IS5	290.44	SCE-10P8J	9.00	7.00	5.70
SCE-1210ELJSS	12.00	10.00	6.00	IS5	328.93	SCE-12P10J	11.00	9.00	7.72
SCE-12108ELJSS	12.00	10.00	8.00	IS5	352.80	SCE-12P10J	11.00	9.00	7.72
SCE-1212ELJSS	12.00	12.00	6.00	IS5	355.50	SCE-12P12J	11.00	11.00	9.08
SCE-1412ELJSS	14.00	12.00	6.00	IS5	378.21	SCE-14P12J	13.00	11.00	10.13
SCE-14128ELJSS	14.00	12.00	8.00	IS5	400.92	SCE-14P12J	13.00	11.00	10.13
SCE-1614ELJSS	16.00	14.00	6.00	IS5	444.87	SCE-16P14J	15.00	13.00	19.96
SCE-16148ELJSS	16.00	14.00	8.00	IS5	508.38	SCE-16P14J	15.00	13.00	19.96

316 STAINLESS STEEL ENVIROLINE® SERIES JUNCTION ENCLOSURES

ENCLOSURE PRODUCT CODE S7						SUB-PANEL (P3)			
Catalog No.	Height (A)	Width (B)	Depth (C)	Industry Standard	List Price	Catalog No.	Panel Height (D)	Panel Width (E)	List Price
SCE-604ELJSS6	6.00	4.00	4.00	IS5	162.64	SCE-6P4J	5.00	3.00	3.02
SCE-606ELJSS6	6.00	6.00	4.00	IS5	203.28	SCE-6P6J	5.00	5.00	3.62
SCE-806ELJSS6	8.00	6.00	4.00	IS5	212.18	SCE-8P6J	7.00	5.00	4.17
SCE-8066ELJSS6	8.00	6.00	6.00	IS5	242.60	SCE-8P6J	7.00	5.00	4.17
SCE-1008ELJSS6	10.00	8.00	4.00	IS5	313.13	SCE-10P8J	9.00	7.00	5.70
SCE-10086ELJSS6	10.00	8.00	6.00	IS5	348.53	SCE-10P8J	9.00	7.00	5.70
SCE-1210ELJSS6	12.00	10.00	6.00	IS5	394.72	SCE-12P10J	11.00	9.00	7.72
SCE-12108ELJSS6	12.00	10.00	8.00	IS5	423.36	SCE-12P10J	11.00	9.00	7.72
SCE-1212ELJSS6	12.00	12.00	6.00	IS5	426.60	SCE-12P12J	11.00	11.00	9.08
SCE-1412ELJSS6	14.00	12.00	6.00	IS5	453.85	SCE-14P12J	13.00	11.00	10.13
SCE-14128ELJSS6	14.00	12.00	8.00	IS5	481.10	SCE-14P12J	13.00	11.00	10.13
SCE-1614ELJSS6	16.00	14.00	6.00	IS5	533.84	SCE-16P14J	15.00	13.00	19.96
SCE-16148ELJSS6	16.00	14.00	8.00	IS5	610.06	SCE-16P14J	15.00	13.00	19.96

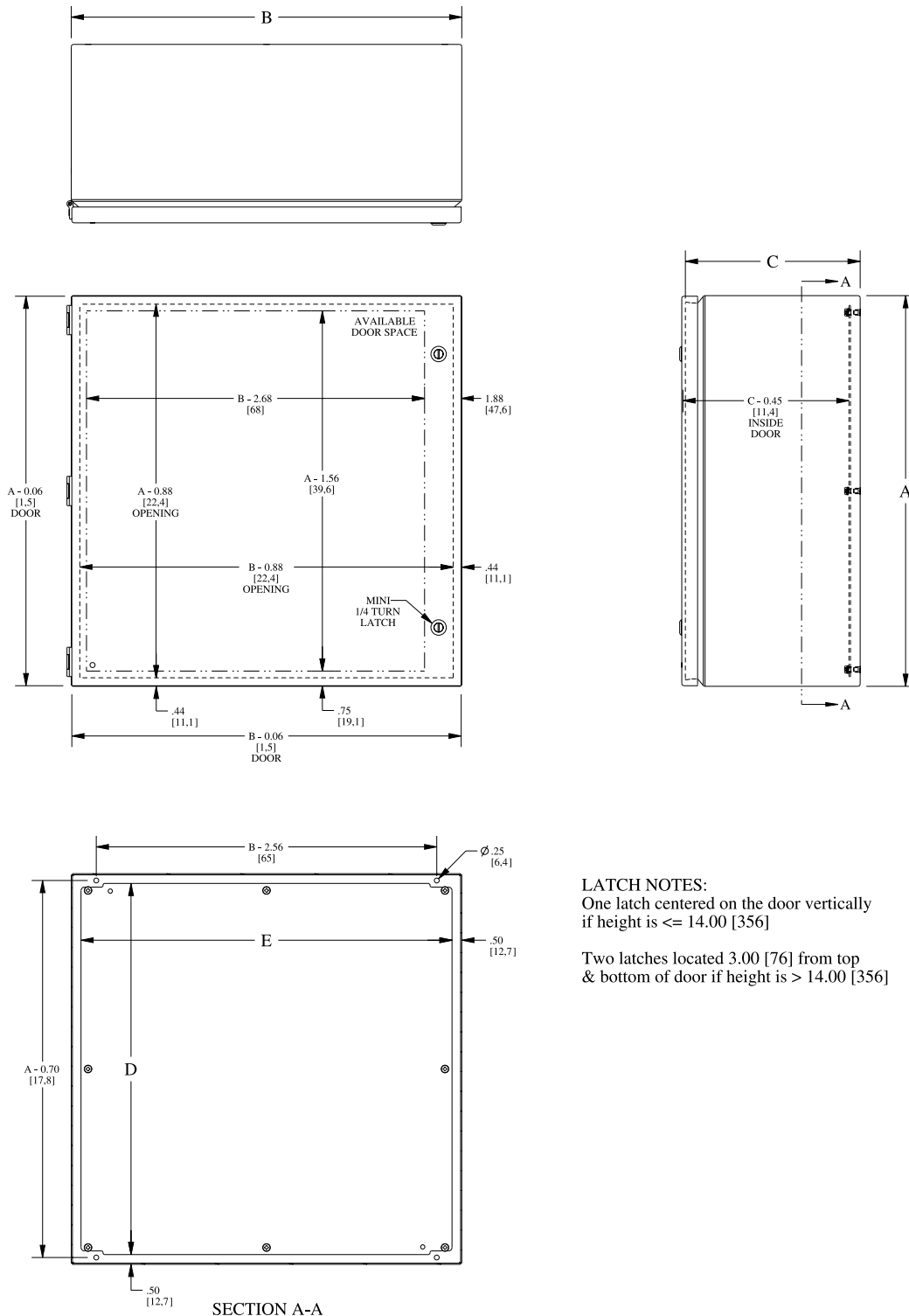


Available within 10 working days if not in stock

Phone (989) 799-6871
Fax (989) 799-4524



STAINLESS STEEL ENVIROLINE® SERIES JUNCTION ENCLOSURES TECHNICAL DATA



LATCH NOTES:
 One latch centered on the door vertically if height is ≤ 14.00 [356]
 Two latches located 3.00 [76] from top & bottom of door if height is > 14.00 [356]