

304 & 316 Stainless Steel Enviroline® Series Junction Enclosures with Viewing Window

Application -

Designed to house electrical controls, instruments and components that require unrestricted viewing of the gages or controls, in areas, which may be regularly hosed down or are in very wet or oily conditions. Provides protection from dust, dirt, oil, and water. For outdoor application a drip shield is recommended. For installation information, consult our Installation Manual at www.saginawcontrol.com.

Construction -

- 0.063" stainless steel Type 304 & 316/316L.
- Seams continuously welded and ground smooth.
- Flange trough collar around all sides of door opening.
- Oil-resistant gasket.
- 0.25" polycarbonate viewing window.
- Standoffs provided for mounting optional panels.
- Removable hinge.
- Doors open 180 degrees.
- Black mini quarter turn latches.
- Latches are opened or closed with a screwdriver.
- Sealing washers and hole plugs included.
- Ground stud on door & body.
- Mounting feet are included.
- Optional latches available.

Finish -

#4 brushed finish on all exterior surfaces. Optional panels are powder coated white.

IS5 - Industry Standards -

NEMA Type 4, 4X, 12 & Type 13
UL Listed Type 4, 4X & 12
CSA Type 4, 4X & 12
IEC 60529 IP66

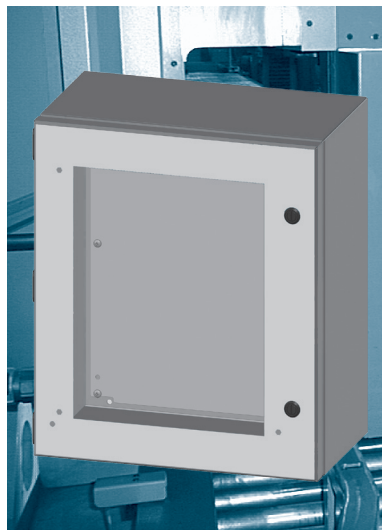
304 Stainless Steel Enviroline® Series Junction Enclosures with Viewing Window

ENCLOSURE PRODUCT CODE S6							SUB-PANEL (P3)	
Catalog No.	Height (A)	Width (B)	Depth (C)	Window Viewing Size	Industry Standard	List Price	Catalog No.	List Price
SCE-1008ELJWSS	10.00	8.00	4.00	6.00 x 3.375	IS5	359.33	SCE-10P8J	5.70
SCE-10086ELJWSS	10.00	8.00	6.00	6.00 x 3.375	IS5	378.97	SCE-10P8J	5.70
SCE-1210ELJWSS	12.00	10.00	6.00	8.00 x 5.375	IS5	418.25	SCE-12P10J	7.72
SCE-12108ELJWSS	12.00	10.00	8.00	8.00 x 5.375	IS5	432.12	SCE-12P10J	7.72
SCE-1614ELJWSS	16.00	14.00	6.00	12.00 x 9.375	IS5	563.84	SCE-16P14J	19.96
SCE-16148ELJWSS	16.00	14.00	8.00	12.00 x 9.375	IS5	597.34	SCE-16P14J	19.96

316 Stainless Steel Enviroline® Series Junction Enclosures with Viewing Window

ENCLOSURE PRODUCT CODE S7							SUB-PANEL (P3)	
Catalog No.	Height (A)	Width (B)	Depth (C)	Window Viewing Size	Industry Standard	List Price	Catalog No.	List Price
SCE-1008ELJWSS6	10.00	8.00	4.00	6.00 x 3.375	IS5	431.20	SCE-10P8J	5.70
SCE-10086ELJWSS6	10.00	8.00	6.00	6.00 x 3.375	IS5	454.77	SCE-10P8J	5.70
SCE-1210ELJWSS6	12.00	10.00	6.00	8.00 x 5.375	IS5	501.91	SCE-12P10J	7.72
SCE-12108ELJWSS6	12.00	10.00	8.00	8.00 x 5.375	IS5	518.54	SCE-12P10J	7.72
SCE-1614ELJWSS6	16.00	14.00	6.00	12.00 x 9.375	IS5	676.60	SCE-16P14J	19.96
SCE-16148ELJWSS6	16.00	14.00	8.00	12.00 X 9.375	IS5	716.81	SCE-16P14J	19.96

Available within 10 working days if not in stock

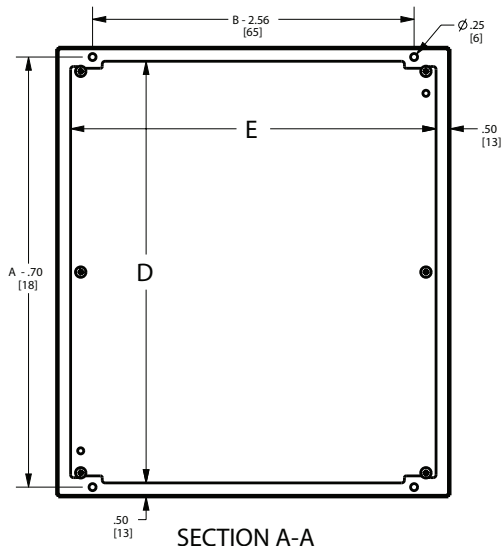
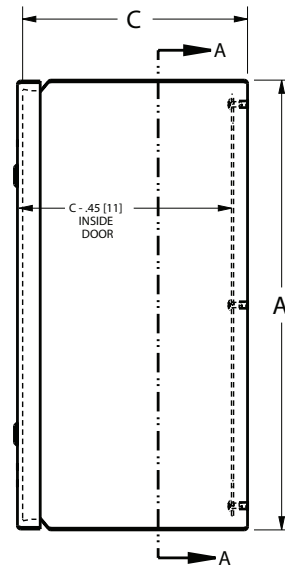
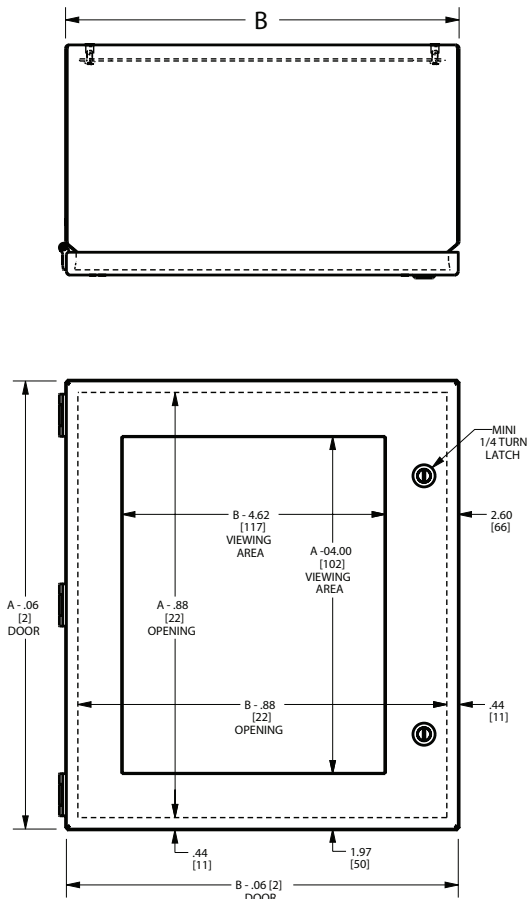


Phone (989) 799-6871
Fax (989) 799-4524



STAINLESS STEEL ENVIROLINE® SERIES JUNCTION ENCLOSURES WITH VIEWING WINDOW

TECHNICAL DATA



LATCH NOTES:
 One latch centered on the door vertically if height is ≤ 14.00 [356]
 Two latches located 3.00 [76] from top & bottom of door if height is > 14.00 [356]