

# DOOR HARDWARE

## 1/4 Turn Door Latch Inserts

Designed to replace black quarter turn latches when additional security is required.

### Slotted 2 x 4 Door Latch (28mm cam included)

Catalog No.	Qty. Per Kit	Finish	Product Code	List Price
SCE-DLSB	1	Chrome	P2	17.38
SCE-DLSBB	1	Black	P2	17.38
SCE-DLSSB	1	Stainless	P2	42.22



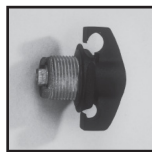
### Wing Knob Door Latch (28mm cam included)

Catalog No.	Qty. Per Kit	Finish	Product Code	List Price
SCE-DLWKC	1	Chrome	P2	17.38
SCE-DLWKF	1	Black	P2	17.38
SCE-DLWKF-25	25	Black	V1	284.83



### Padlocking Wing Knob Latch (28mm cam included)

Catalog No.	Qty. Per Kit	Finish	Product Code	List Price
SCE-PLWKB	1	Black	P2	19.87
SCE-PLWKB-50	50	Black	V1	651.65



### 7mm Triangular Latch with Key (28mm cam included)

(Key: SCE-107930)

Catalog No.	Qty. Per Kit	Finish	Product Code	List Price
SCE-DL7TE	1	Chrome	P2	17.38



### Coinproof Door Latch (28mm cam included)

Catalog No.	Qty. Per Kit	Finish	Product Code	List Price
SCE-DLCA	1	Chrome	P2	14.90



### 5mm Double Bit Door Latch with Key (28mm cam included)

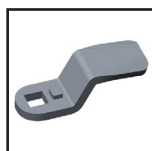
(Key: SCE-110047)

Catalog No.	Qty. Per Kit	Finish	Product Code	List Price
SCE-DL5MDB	1	Chrome	P2	12.91
SCE-DL5MDBB	1	Black	P2	12.91



### 6 mm External Stop Cam, Plated Steel for use with Quarter Turn Latch.

Catalog No.	Qty. Per Kit	Product Code	List Price
SCE-100814	10	P2	24.00



### Padlocking Housing Latch (28mm cam included)

Catalog No.	Qty. Per Kit	Finish	Product Code	List Price
SCE-PLHG	1	Black	P2	17.38



### Keylocking Wing Knob Latch (28mm cam included)

(Key: SCE-K333)

Catalog No.	Qty. Per Kit	Finish	Product Code	List Price
SCE-KLWN	1	Chrome	P2	34.77
SCE-KLWNB	1	Black	P2	34.77



### Keylocking Door Latch (28mm cam included)

(Key: SCE-K333)

Catalog No.	Qty. Per Kit	Finish	Product Code	List Price
SCE-DLKLDB	1	Black	P2	27.99
SCE-DLKLDB-25	25	Black	V1	543.12



### 7mm Square Door Latch with Key (28mm cam included)

(Key: SCE-101695)

Catalog No.	Qty. Per Kit	Finish	Product Code	List Price
SCE-DL7SC	1	Chrome	P2	17.38



### 8mm Square Door Latch with Key (28mm cam included)

(Key: SCE-101697)

Catalog No.	Qty. Per Kit	Finish	Product Code	List Price
SCE-DL8SB	1	Black	P2	12.91
SCE-DL8SC	1	Chrome	P2	12.91



### Non-Locking "T" Handle (28mm cam included)

Catalog No.	Qty. Per Kit	Finish	Product Code	List Price
SCE-NLTH	1	Chrome	P2	24.84



### Keylocking "T" Handle (28mm cam included)

(Key: SCE-K333)

Catalog No.	Qty. Per Kit	Finish	Product Code	List Price
SCE-ELKLT	1	Chrome	P2	39.19



### 28 mm External Stop Cam, Plated Steel for use with Quarter Turn Latch.

Catalog No.	Qty. Per Kit	Product Code	List Price
SCE-102804	10	P2	24.00