

Pushbutton Enclosures for 22.5 mm Pushbuttons

Application -

Designed to offer protection for miniature oil-tight pushbuttons, switches, and pilot lights from dust, water, dirt and oil. For installation information, consult our Installation Manual at www.saginawcontrol.com.

Construction -

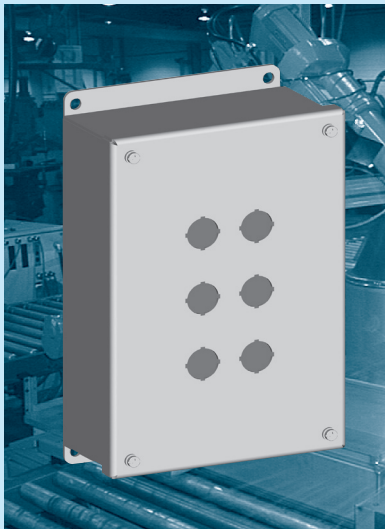
- 0.063" carbon steel.
- Continuously welded seams.
- Captivated cover screws thread into sealed wells.
- 4-way miniature pushbutton holes accept all brands of oil-tight pushbuttons, switches and pilot lights. Hole diameter is 0.87" (22.5 mm).
- Immediate removal of cover is permitted.
- Oil-resistant gasket.

Finish -

ANSI-61 gray powder coated inside and out.

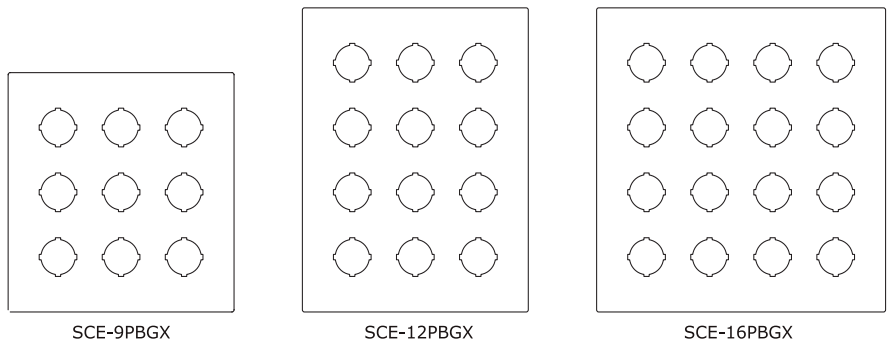
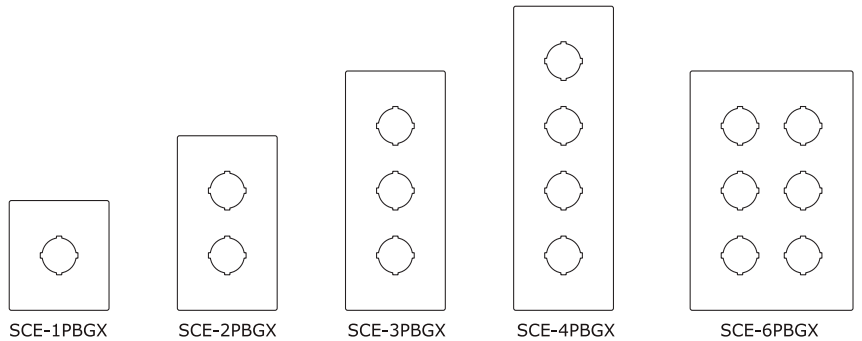
IS2 - Industry Standards -

NEMA Type 4, 12 & Type 13
UL Listed Type 4 & 12
CSA Type 4 & 12
IEC 60529 IP66



PUSHBUTTON ENCLOSURES FOR 22.5 mm PUSHBUTTONS

ENCLOSURE PRODUCT CODE A1					
Catalog No.	Height (A)	Width (B)	Depth (C)	Industry Standard	List Price
SCE-1PBGX	3.25	2.75	3.50	IS2	50.17
SCE-2PBGX	5.13	2.75	3.50	IS2	55.18
SCE-3PBGX	7.00	2.75	3.50	IS2	61.45
SCE-4PBGX	8.88	2.75	3.50	IS2	67.71
SCE-6PBGX	8.50	5.00	4.25	IS2	86.52
SCE-9PBGX	8.50	6.50	4.25	IS2	95.31
SCE-12PBGX	10.38	6.50	4.25	IS2	106.60
SCE-16PBGX	10.38	8.00	4.25	IS2	142.96

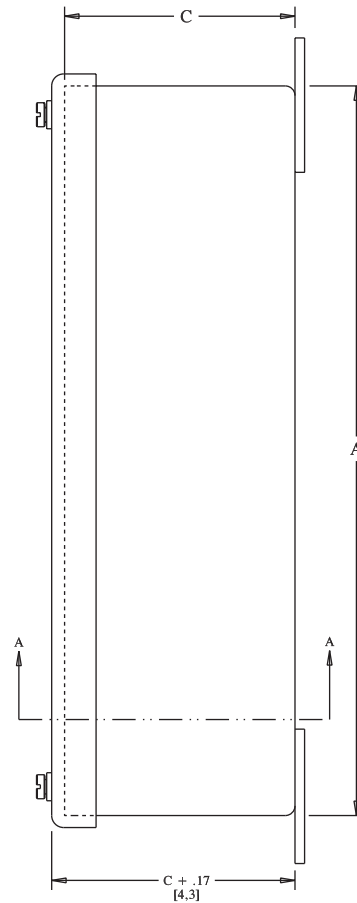
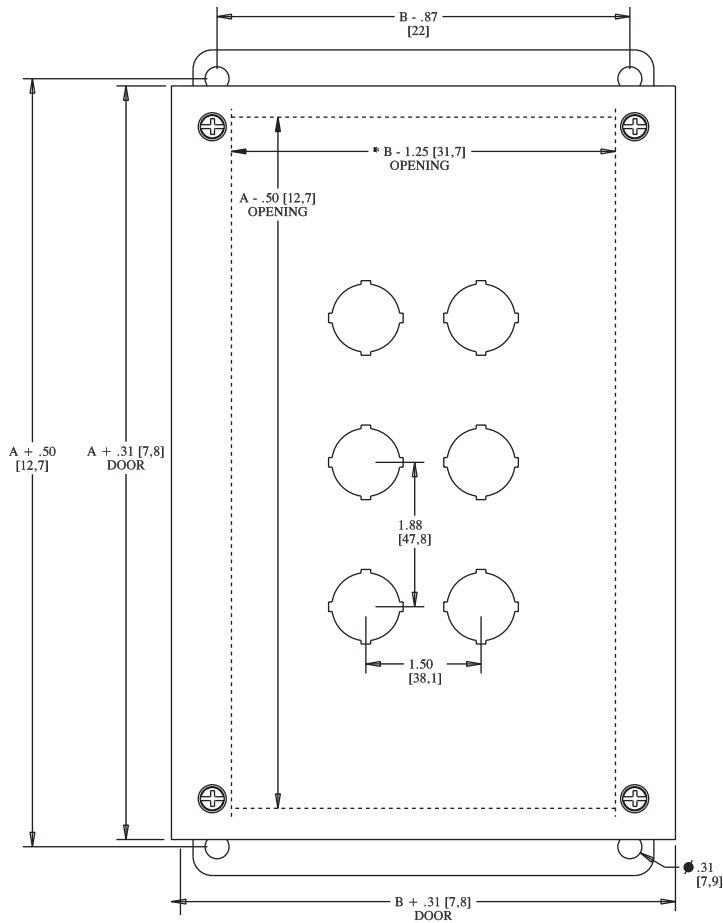


Phone (989) 799-6871
Fax (989) 799-4524

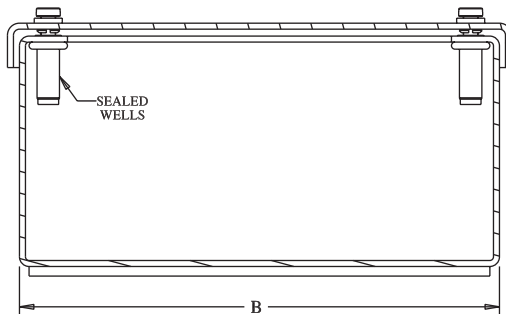


PUSHBUTTON ENCLOSURE FOR 22.5 mm PUSHBUTTONS

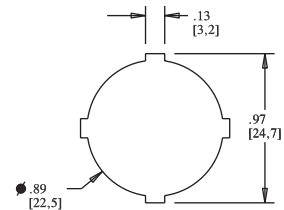
TECHNICAL DATA



NOTE:
* B - .50 [12.7] ONE COLUMN OF PUSHBUTTONS



SECTION A-A



MINIATURE 4-WAY