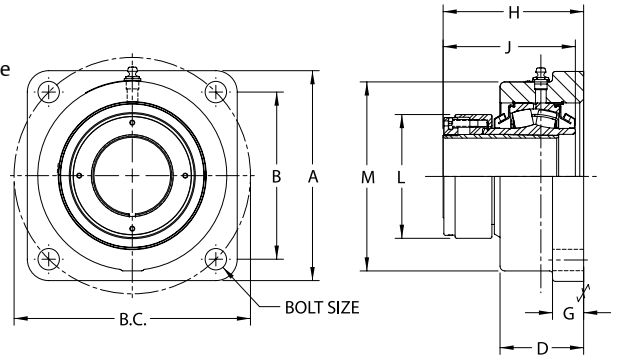


Performance Mounted Spherical Roller Bearings **SEALMASTER**[®]



- Rolling Elements:** Spherical Roller
- Housing:** Ductile Iron Four Bolt Flange
- Self Alignment:** +/- 2 Degrees
- Lock:** Adapter
- Seal:** Felt
- Optional Seal:** Double Lip Contact
- Temperature:** -20° to 220° F



USFBE5000A Series Four-Bolt Flange Units - Adapter Mount, Type E Mounting Dimensions

Bore Diameter	Part No.	Basic Dynamic Rating lb/N	Dimensions inch / mm										Unit Wt. lb/kg	
			A	B	B.C.	D	G	H*	J	L	M	Bolt Size		
1 15/16	USFBE5000A-115	23520	5 1/2	4 3/8	6 3/16	2 9/16	7/8	3 51/64	3 1/2	3 11/64	4 31/32	1/2	12.0	
2	USFBE5000A-200	104617	139.7	111.1	157.2	65.1	22.2	96.4	88.9	80.6	126.2		5.48	
2 3/16	USFBE5000A-203	28087 124931	6 3/16	4 7/8	6 57/64	2 5/8	1	4 1/16	3 7/8	3 7/16	5 15/32	5/8	15.5 7.04	
2 7/16	USFBE5000A-207	44691	6 3/4	5 3/8	7 19/32	2 11/16	1	4 13/32	4 5/16	3 63/64	6 3/32		5/8	20.0 9.10
2 1/2	USFBE5000A-208	198786	171.5	136.5	192.9	68.3	25.4	111.9	109.5	101.2	154.8	3/4		9.10
2 11/16	USFBE5000A-211	47447	7 5/8	6	8 31/64	2 3/4	1 1/16	4 19/32	4 31/64	4 25/64	6 53/64		3/4	26.5
2 3/4	USFBE5000A-212													
2 15/16	USFBE5000A-215	211044	193.7	152.4	215.5	69.9	27.0	116.7	113.9	111.5	173.4		3/4	12.04
3	USFBE5000A-300													
3 3/16	USFBE5000A-303	72640 323103	8 5/8	7	9 29/32	3 1/4	1 1/4	5 43/64	5 35/64	5 15/32	7 31/32	3/4	42.3 19.23	
3 7/16	USFBE5000A-307													
3 1/2	USFBE5000A-308													
3 11/16	USFBE5000A-311	96050 427230	9 1/2	7 19/32	10 3/4	3 11/16	1 1/4	6 5/64	5 15/16	5 13/16	8 7/8	7/8	53.0 24.10	
3 15/16	USFBE5000A-315													
4	USFBE5000A-400		241.3	192.9	273.1	93.7	31.8	154.4	150.8	147.6	225.4			

*For expansion bearings, this dimension can increase by the corresponding value in table VIII on page I-69. One expansion unit is to be used in conjunction with one non-expansion unit for applications using an adapter lock unit. Failure to utilize one expansion and one non-expansion unit is likely to result in reduced bearing performance.