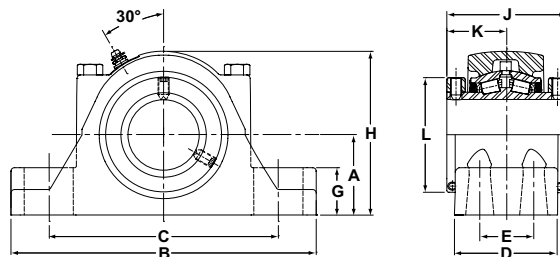


- Rolling Elements:** Tapered Roller
- Housing:** Cast Iron Four Bolt Pillow Block
- Self Alignment:** +/- 3 Degrees
- Lock:** Setscrew, Double Collar
- Seal:** Felt
- Optional Seal:** Single Lip Contact
- Temperature:** -20°F to 220°F



RPB Series Four-Bolt Base Pillow Blocks

Bore Diameter		Part No.	Bearing Insert No.	Basic Dynamic Rating lb/N	Dimensions inch / mm											Unit Wt. lb/kg	
					A	B	C		D	E	G	H	J	K	L		Bolt Size
inch	mm						Min.	Max.									
2 1/4	60	RPB-204-4	RCI-204	9030 40167	2 3/4 69.9	10 3/8 263.5	7 3/4 196.9	8 3/4 222.3	3 1/2 88.9	1 7/8 47.6	1 5/8 41.3	5 5/8 142.9	4 101.6	2 50.8	3 15/16 100.0	5/8	22.4 10.16
		RPB-60MM-4	RCI-60MM														
2 7/16	65	RPB-207-4	RCI-207	9630 42836	2 3/4 69.9	10 3/8 263.5	7 3/4 196.9	8 3/4 222.3	3 1/2 88.9	1 7/8 47.6	1 5/8 41.3	5 5/8 142.9	4 101.6	2 50.8	3 15/16 100.0	5/8	22.4 10.16
2 1/2		RPB-208-4	RCI-208														
2 11/16	70	RPB-211-4	RCI-211	9630 42836	3 1/8 79.4	11 3/4 298.5	8 3/4 222.3	10 254.0	3 3/4 95.3	2 1/8 54.0	1 3/4 44.5	6 3/8 161.9	4 1/2 114.3	2 1/4 57.2	4 23/32 119.9	5/8	31.5 14.29
		2 3/4	RPB-212-4														
2 15/16	75	RPB-70MM-4	RCI-70MM	15320 68147	3 1/8 79.4	11 3/4 298.5	8 3/4 222.3	10 254.0	3 3/4 95.3	2 1/8 54.0	1 3/4 44.5	6 3/8 161.9	4 1/2 114.3	2 1/4 57.2	4 23/32 119.9	5/8	31.5 14.29
2 1/2		RPB-215-4	RCI-215														
3	75	RPB-75MM-4	RCI-75MM	15320 68147	3 1/8 79.4	11 3/4 298.5	8 3/4 222.3	10 254.0	3 3/4 95.3	2 1/8 54.0	1 3/4 44.5	6 3/8 161.9	4 1/2 114.3	2 1/4 57.2	4 23/32 119.9	5/8	31.5 14.29
	RPB-300-4	RCI-300															
3 3/16	80	RPB-80MM-4	RCI-80MM	15320 68147	3 3/4 95.3	13 3/4 349.3	10 9/16 268.3	11 1/2 292.1	4 1/2 114.3	2 3/8 60.3	2 1/16 52.4	7 3/4 196.9	5 127.0	2 1/2 63.5	5 7/16 138.1	3/4	59.6 27.03
		3 1/4	RPB-303-4														
3 7/16	85	RPB-85MM-4	RCI-85MM	15320 68147	3 3/4 95.3	13 3/4 349.3	10 9/16 268.3	11 1/2 292.1	4 1/2 114.3	2 3/8 60.3	2 1/16 52.4	7 3/4 196.9	5 127.0	2 1/2 63.5	5 7/16 138.1	3/4	59.6 27.03
3 1/2		RPB-307-4	RCI-307														
3 15/16	90	RPB-308-4	RCI-308	15320 68147	3 3/4 95.3	13 3/4 349.3	10 9/16 268.3	11 1/2 292.1	4 1/2 114.3	2 3/8 60.3	2 1/16 52.4	7 3/4 196.9	5 127.0	2 1/2 63.5	5 7/16 138.1	3/4	59.6 27.03
			RPB-90MM-4														
4	95	RPB-95MM-4	RCI-95MM	20980 93324	4 1/4 108.0	15 1/4 387.4	11 279.4	13 330.2	4 1/2 114.3	2 1/4 57.2	2 7/16 61.9	8 5/8 219.1	6 1/4 158.8	3 1/8 79.4	5 15/16 150.8	3/4	76.9 34.88
	RPB-315-4	RCI-315															
4 7/16	110	RPB-100MM-4	RCI-100MM	25750 114542	4 3/4 120.7	16 1/2 419.1	11 279.4	13 330.2	4 1/2 114.3	2 1/4 57.2	2 7/16 61.9	8 5/8 219.1	6 1/4 158.8	3 1/8 79.4	5 15/16 150.8	3/4	76.9 34.88
		4	RPB-400-4														
4 1/2	115	RPB-105MM-4	RCI-105MM	25750 114542	4 3/4 120.7	16 1/2 419.1	11 279.4	13 330.2	4 1/2 114.3	2 1/4 57.2	2 7/16 61.9	8 5/8 219.1	6 1/4 158.8	3 1/8 79.4	5 15/16 150.8	3/4	76.9 34.88
		RPB-110MM-4	RCI-110MM														
4 7/16	120	RPB-407-4	RCI-407	25750 114542	4 3/4 120.7	16 1/2 419.1	11 3/4 298.5	13 7/8 352.4	4 5/8 117.5	2 1/2 63.5	2 3/4 69.9	9 5/8 244.5	6 3/4 171.5	3 3/8 85.7	6 13/32 162.7	3/4	95.6 43.36
		4 1/2	RPB-408-4														
4 15/16	125	RPB-115MM-4	RCI-115MM	35520 158001	5 1/2 139.7	18 1/2 469.9	13 1/2 342.9	15 7/8 403.2	5 1/8 130.2	2 3/4 69.9	3 1/8 79.4	11 279.4	7 1/4 184.2	3 5/8 92.1	7 13/32 188.1	7/8	143.6 65.14
		5	RPB-415-4														
	125	RPB-500-4	RCI-500	35520 158001	5 1/2 139.7	18 1/2 469.9	13 1/2 342.9	15 7/8 403.2	5 1/8 130.2	2 3/4 69.9	3 1/8 79.4	11 279.4	7 1/4 184.2	3 5/8 92.1	7 13/32 188.1	7/8	143.6 65.14