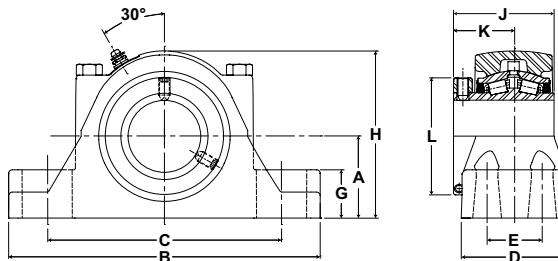




- Rolling Elements:** Tapered Roller
- Housing:** Cast Iron Four Bolt Pillow Block
- Self Alignment:** +/- 3 Degrees
- Lock:** Setscrew, Single Collar
- Seal:** Felt
- Optional Seal:** Single Lip Contact
- Temperature:** -20°F to 220°F



## RPBA Series Four-Bolt Base Pillow Blocks

Bore Diameter		Part No.	Bearing Insert No.	Basic Dynamic Rating lb/N	Dimensions inch / mm											Unit Wt. lb/kg		
					A	B	C		D	E	G	H	J	K	L		Bolt Size	
inch	mm						Min.	Max.										
2 1/4	60	RPBA-204-4	RCIA-204	9030 40167	2 3/4 69.9	10 3/8 263.5	7 3/4 196.9	8 3/4 222.3	3 1/2 88.9	1 7/8 47.6	1 5/8 41.3	5 5/8 142.9	3 5/16 84.1	2 50.8	3 15/16 100.0	5/8	22.4 10.16	
		RPBA-60MM-4	RCI-60MM															
		RPBA-207-4	RCIA-207															
2 1/2	65	RPBA-208-4	RCIA-208	9630 42836	3 1/8 79.4	11 3/4 298.5	8 3/4 222.3	10 254.0	3 3/4 95.3	2 1/8 54.0	1 3/4 44.5	6 3/8 161.9	3 11/16 93.7	2 1/2 63.5	4 23/32 119.9	5/8	31.5 14.29	
RPBA-211-4		RCIA-211																
2 3/4	70	RPBA-212-4	RCIA-212	15320 68147	3 3/4 95.3	13 3/4 349.3	10 9/16 268.3	11 1/2 292.1	4 1/2 114.3	2 3/8 60.3	2 1/16 52.4	7 3/4 196.9	4 3/16 106.4	2 1/2 63.5	5 7/16 138.1	3/4	59.8 27.12	
2 15/16		RPBA-70MM-4	RCI-70MM															
3		RPBA-215-4	RCIA-215															
3 3/16	80	RPBA-303-4	RCIA-303	20980 93324	4 1/4 108.0	15 1/4 387.4	11 279.4	13 330.2	4 1/2 114.3	2 1/4 57.2	2 7/16 61.9	8 5/8 219.1	5 1/4 133.4	3 1/8 79.4	5 15/16 150.8	3/4	76.9 34.88	
		3 1/4	RPBA-304-4															RCIA-304
		3 7/16	RPBA-85MM-4															RCI-85MM
3 1/2	85	RPBA-307-4	RCIA-307	25750 114542	4 3/4 120.7	16 1/2 419.1	11 3/4 298.5	13 7/8 352.4	4 5/8 117.5	2 1/2 63.5	2 7/8 73.0	9 5/8 244.5	5 1/2 139.7	3 3/8 85.7	6 13/32 162.7	3/4	95.6 43.36	
		3 1/2	RPBA-308-4															RCIA-308
		3 15/16	RPBA-90MM-4															RCI-90MM
4	100	RPBA-315-4	RCIA-315	35520 158001	5 1/2 139.7	18 1/2 469.9	13 1/2 342.9	15 7/8 403.2	5 1/8 130.2	2 3/4 69.9	3 1/8 79.4	11 279.4	6 13/64 157.6	3 5/8 92.1	7 13/32 188.1	7/8	143.6 65.14	
		4	RPBA-100MM-4															RCI-100MM
		4 1/2	RPBA-400-4															RCIA-400
4 7/16	105	RPBA-105MM-4	RCI-105MM	25750 114542	4 3/4 120.7	16 1/2 419.1	11 3/4 298.5	13 7/8 352.4	4 5/8 117.5	2 1/2 63.5	2 7/8 73.0	9 5/8 244.5	5 1/2 139.7	3 3/8 85.7	6 13/32 162.7	3/4	95.6 43.36	
		4 1/2	RPBA-110MM-4															RCI-110MM
		4 7/16	RPBA-407-4															RCIA-407
4 1/2	110	RPBA-408-4	RCIA-408	35520 158001	5 1/2 139.7	18 1/2 469.9	13 1/2 342.9	15 7/8 403.2	5 1/8 130.2	2 3/4 69.9	3 1/8 79.4	11 279.4	6 13/64 157.6	3 5/8 92.1	7 13/32 188.1	7/8	143.6 65.14	
		4 1/2	RPBA-115MM-4															RCI-115MM
		4 15/16	RPBA-120MM-4															RCI-120MM
5	120	RPBA-125MM-4	RCI-125MM	35520 158001	5 1/2 139.7	18 1/2 469.9	13 1/2 342.9	15 7/8 403.2	5 1/8 130.2	2 3/4 69.9	3 1/8 79.4	11 279.4	6 13/64 157.6	3 5/8 92.1	7 13/32 188.1	7/8	143.6 65.14	
		5	RPBA-415-4															RCIA-415
		5	RPBA-500-4															RCIA-500