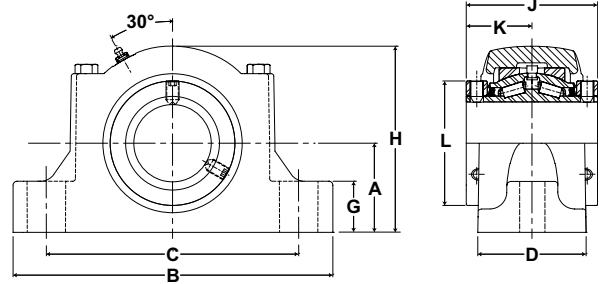




- Rolling Elements:** Tapered Roller
- Housing:** Cast Iron Two Bolt Pillow Block
- Self Alignment:** +/- 3 Degrees
- Lock:** Setscrew, Double Collar
- Seal:** Felt
- Optional Seal:** Single Lip Contact
- Temperature:** -20°F to 220°F



Mtd. Tapered Bearings



## ERP Expansion Series Two-Bolt Base Pillow Blocks

Bore Diameter		Part No.	Bearing Insert No.	Basic Dynamic Rating lb/N	Dimensions inch / mm											Unit Wt. lb/kg	
					A	B	C		D	G	H	J	K	L	Bolt Size		Total Expansion
inch	mm						Min.	Max.									
1 3/4	45	ERP-112-2	ERCI-112	8070 35897	2 1/4 57.2	8 7/8 225.4	6 5/16 160.3	7 3/16 182.6	2 57/64 73.4	1 1/4 31.8	4 7/8 123.8	3 1/2 88.9	1 3/4 44.5	3 1/4 82.6	5/8	3/16 4.8	14.9 6.76
		ERP-115-2	ERCI-115														
2	50	ERP-200-2	ERCI-200														
2 3/16	55	ERP-55MM-2	ERCI-55MM	8570	2 1/2	9 5/8	6 11/16	7 15/16	3 1/32	1 7/16	5 5/16	3 3/4	1 7/8	3 5/8	5/8	3/16	17.8
		ERP-203-2	ERCI-203	38121	63.5	244.5	169.9	201.6	77.0	36.5	134.9	95.3	47.6	92.1		4.8	8.07
2 1/4	60	ERP-204-2	ERCI-204	9030 40167	2 3/4 69.9	10 3/8 263.5	6 15/16 176.2	8 11/16 220.7	3 13/32 86.5	1 5/8 41.3	5 3/4 146.1	4 101.6	2 50.8	3 15/16 100.0	5/8	1/4	23.0
		ERP-207-2	ERCI-207													ERP-208-2	ERCI-208
2 1/2	65	ERP-65MM-2	ERCI-65MM														
2 11/16	70	ERP-211-2	ERCI-211	9630 42836	3 1/8 79.4	11 3/4 298.5	8 1/16 204.8	9 11/16 246.1	3 31/64 88.5	1 3/4 44.5	6 9/16 166.7	4 33/64 114.7	2 1/4 57.3	4 23/32 119.9	3/4	5/16	32.0
		ERP-212-2	ERCI-212													ERP-70MM-2	ERCI-70MM
2 15/16	75	ERP-75MM-2	ERCI-75MM														
3	80	ERP-300-2	ERCI-300														
3 3/16	85	ERP-80MM-2	ERCI-80MM	15320 68147	3 3/4 95.3	13 3/4 349.3	10 1/8 257.2	11 1/4 285.8	4 33/64 114.7	2 1/16 52.4	7 15/16 201.6	5 127.0	2 1/2 63.5	5 7/16 138.1	7/8	5/16	64.0
		ERP-303-2	ERCI-303													ERP-304-2	ERCI-304
3 1/4	90	ERP-90MM-2	ERCI-90MM														
3 7/16	95	ERP-95MM-2	ERCI-95MM														

Metric dimensions for reference only.

Not all parts are available from stock. Please contact customer service for availability (800) 626-2120.

For more information on bearing capabilities outside of our standard offering, please contact Application Engineering (800) 626-2093.