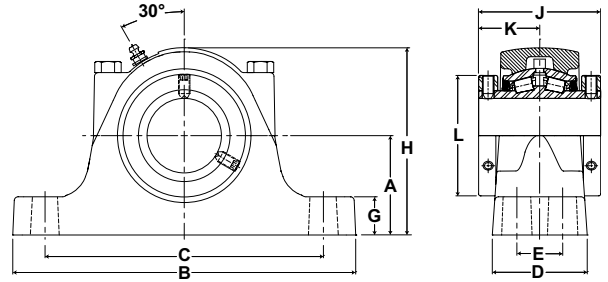




- Rolling Elements:** Tapered Roller
- Housing:** Cast Iron Four Bolt Pillow Block
- Self Alignment:** +/- 3 Degrees
- Lock:** Setscrew, Double Collar
- Seal:** Felt
- Optional Seal:** Single Lip Contact
- Temperature:** -20°F to 220°F



RPBXT Series Four-Bolt Base Pillow Blocks - SAF Mounting Dimensions

Bore Diameter		Part No.	Bearing Insert No.	Basic Dynamic Rating lb/N	Dimensions inch / mm											Unit Wt. lb/kg	
					A	B	C		D	E	G	H	J	K	L		Bolt Size
inch	mm						Min.	Max.									
2 1/4	60	RPBXT-204-4	RCI-204	9030 40167	3 1/4 82.6	11 1/4 285.8	8 5/8 219.1	9 5/8 244.5	3 1/8 79.4	1 7/8 47.6	1 1/4 31.8	6 1/8 155.6	4 101.6	2 50.8	3 15/16 100.0	1/2	25.5 11.57
		RPBXT-60MM-4	RCI-60MM														
2 7/16	65	RPBXT-207-4	RCI-207	9630 42836	3 3/4 95.3	13 330.2	10 254.0	11 279.4	3 1/2 88.9	2 1/8 54.0	1 1/2 38.1	7 177.8	4 1/2 114.3	2 1/4 57.2	4 23/32 119.9	5/8	36.2 16.42
2 1/2		RPBXT-208-4	RCI-208														
2 11/16	70	RPBXT-211-4	RCI-211	15320 68147	4 1/2 114.3	15 1/4 387.4	11 3/4 298.5	12 3/4 323.9	4 3/8 111.1	2 3/8 60.3	1 3/4 44.5	8 1/2 215.9	5 127.0	2 1/2 63.5	5 7/16 138.1	3/4	67.8 30.75
		2 3/4	RPBXT-212-4														
2 15/16	75	RPBXT-70MM-4	RCI-70MM	20980 93324	4 15/16 125.4	16 1/2 419.1	12 7/8 327.0	14 1/8 358.8	4 3/4 120.7	2 3/4 69.9	2 50.8	9 5/16 236.5	6 1/4 158.8	3 1/8 79.4	5 15/16 150.8	3/4	93 42.18
		3	RPBXT-215-4														
3 3/16	80	RPBXT-211-4	RCI-211	25750 114542	6 152.4	18 3/8 466.7	14 1/2 368.3	16 406.4	5 1/4 133.4	3 1/4 82.6	2 1/2 63.5	10 7/8 276.2	6 3/4 171.5	3 3/8 85.7	6 13/32 162.7	7/8	114.7 52.03
		3 1/4	RPBXT-303-4														
3 1/4	85	RPBXT-304-4	RCI-304	35520 158001	6 152.4	20 1/8 511.2	15 5/8 396.9	17 3/8 441.3	6 152.4	3 3/8 85.7	2 1/2 63.5	11 1/2 292.1	7 1/4 184.2	3 5/8 92.1	7 13/32 188.1	1	172.4 78.20
		3 7/16	RPBXT-85MM-4														
3 1/2	90	RPBXT-307-4	RCI-307	158001	152.4	511.2	396.9	441.3	152.4	85.7	63.5	292.1	184.2	92.1	188.1	1	172.4 78.20
		3 1/2	RPBXT-308-4														
3 15/16	100	RPBXT-90MM-4	RCI-90MM	158001	152.4	511.2	396.9	441.3	152.4	85.7	63.5	292.1	184.2	92.1	188.1	1	172.4 78.20
		4	RPBXT-100MM-4														
4	105	RPBXT-400-4	RCI-400	158001	152.4	511.2	396.9	441.3	152.4	85.7	63.5	292.1	184.2	92.1	188.1	1	172.4 78.20
		4	RPBXT-105MM-4														
4 7/16	110	RPBXT-110MM-4	RCI-110MM	158001	152.4	511.2	396.9	441.3	152.4	85.7	63.5	292.1	184.2	92.1	188.1	1	172.4 78.20
		4 1/2	RPBXT-407-4														
4 1/2	115	RPBXT-408-4	RCI-408	158001	152.4	511.2	396.9	441.3	152.4	85.7	63.5	292.1	184.2	92.1	188.1	1	172.4 78.20
		4 1/2	RPBXT-115MM-4														
4 15/16	120	RPBXT-120MM-4	RCI-120MM	158001	152.4	511.2	396.9	441.3	152.4	85.7	63.5	292.1	184.2	92.1	188.1	1	172.4 78.20
		5	RPBXT-500-4														

Metric dimensions for reference only.
 Not all parts are available from stock. Please contact customer service for availability (800) 626-2120.
 For more information on bearing capabilities outside of our standard offering, please contact Application Engineering (800) 626-2093.