



State Motor and Control Solutions
 1977 Congressional Drive
 St. Louis, MO 63146
 314-569-2140
 314-569-2488 (fax)
 866-354-0063
www.motorsandcontrol.com

Electric Motors, Motor Controls, & Power Transmission Equipment

Electrical & Control Products	Mechanical & Power Transmission Products
-------------------------------	--

Automation (PLC/HMI)

ABB
Siemens

AC Motors

ABB
A.O. Smith
Baldor Electric
Brook Compton
Century
Lafert
Leroy Summer
Leeson Electric
Lincoln Electric
Magnetek Electric
Reuland Electric
U.S. Electrical/Nidec
WEG Electric

AC Variable Frequency Drives

ABB
Baldor Electric
Leeson Electric
WEG Electric
Yaskawa

Brakes/Clutches

Stearns

Cable Management Products

ABB/Entrelec
EMM
IBOCO
Icotek
Kabelschlepp
Mencom
Niedax USA

DC Motors

A.O. Smith
Baldor Electric
Bodine Electric
Leeson Electric
U.S. Electrical Motors/Nidec

DC Variable Speed Drives

ABB
Baldor Electric
Bodine Electric
KB Electronics

Electric Enclosures

Akron Electric
Hammond
Saginaw
Vynckier

Fuses

Littelfuse

Motor Control Products

ABB
Mars
Siemens/Furnas Electric
WEG Electric

Photo/Proximity Sensors

HTM Sensors

Relays/Timers

ABB/Entrelec
Diversified
IDEC
Time Mark
Siemens

Soft Starters

ABB
Benshaw
Motortronics
Siemens
WEG Electric

Transformers/Line Reactors

ABB
Hammond Power
Hevi-Duty
Micron
Olsen Transformer
TCI

Actuators

Accu Tech USA
Joyce Dayton
PBC Linear

Bearings

AMI
Amec
Bearings 2000
Browning
Hub City
IKO
Lee Linear
Nachi
PCI Pro Cal
PT International
PBC Linear
SealMaster

Couplings

Browning
Koplex
Lovejoy

Gear Boxes/Gear Motors

Baldor Electric
Bodine Electric
Boston Gear
Browning
Grove Gear
Hub City
Leeson Electric
Morse
Nord
SEW Eurodrive
Winsmith

Linear Systems

Accu Tech USA
Bishop Wisecarver
IKO
Lee Linear
PBC Linear

Motor Bases

Overly Hautz

Sheaves/V-Belts

Browning
B&B Mfg.
Maska
Maurey Mfg.
Van Gorp

Sprockets/Chain

Allied Locke
Browning
G&G Manufacturing
KVP/Rainblow Tabletop Chain
Linn Gear
Peer
UST

Why Purchase from State

- * Super-Fast Response and Shipping
- * Large Local Stock
- * Expert Technical Customer Service/Support
- * On-Staff Controls Engineer
- * Up-to-Date Interactive Website w/Product Data
- * After Sale Service & Support

24 Hour Emergency Service



State Motor and Control Solutions
 1977 Congressional Drive
 St. Louis, MO 63146
 314-569-2140
 314-569-2488 (fax)
 866-354-0063
www.motorsandcontrol.com

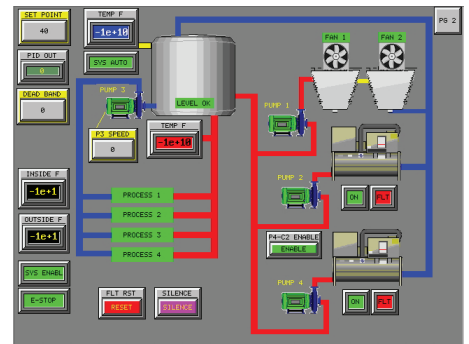
UL 508 Panel Shop - Motor/Pump Repair Capabilities

UL 508 Control Panel Engineering/Fabrication

State Motor & Control Solutions has been designing and fabricating Industrial & Commercial Control Panels and Automation Systems for a multitude of industries & applications for over 30 years. We are known for our technical expertise, well designed and fabricated Control Panels & Automation Systems, complete documentation, and quick response.

Electrical Control Panel & Automation System Capabilities:

- * UL508 Electrical Control Panel Certified
- * Engineer, Design, Fabricate a Solution based on your Specifications/Process/Sequence of Events
- * Retrofit an Existing Control Panel or Automation System
- * Quick Quote Response and Delivery based on your Needs
- * Complete Electrical Control System Start-up Capabilities
- * Variable Speed AC/DC Drive Control Panels & Systems
- * PLC/HMI Control Panels & Systems
- * Custom Electric Motor Control Centers
- * Combination Electric Motor Starter Panels & Systems
- * MMI (Man Machine Interface) Control Systems
- * Process Control Systems



Motor & Pump Repair, Rebuild, Rewind

Our Extensive Service and Repair capabilities will help you reduce your downtime - 24 hours a day, seven days a week.

Services Include:

- * Rebuild/Rewind Electric Motors
- * Gearbox Mechanical Repairs
- * Pump Repair
- * On-Site Bearing Replacement
- * Laser Alignment

Equipment Serviced

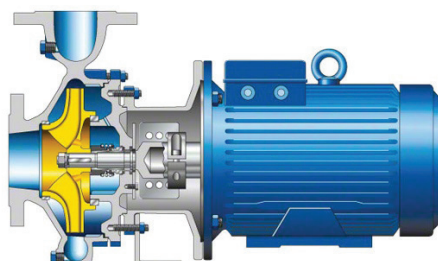
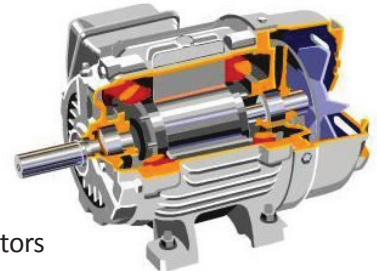
- * AC/DC Motors from Fractional to 500HP
- * Pumps
- * Brake/Clutches
- * Eddy Current Clutch Drives
- * Gear Boxes
- * Varidrives

Warranty

- * One Year Parts and Labor Warranty on all Motor Rewinds
- * 90 Day Warranty on Mechanical Repairs

Authorized Service/Warranty for:

- A.O. Smith
- Baldor Electric
- Leeson Electric
- Lincoln Motors
- Magnetek
- Marathon
- Stearns Brakes
- U.S. Electric/Nidec Motors
- Weg Electric



24 Hour Emergency Service