



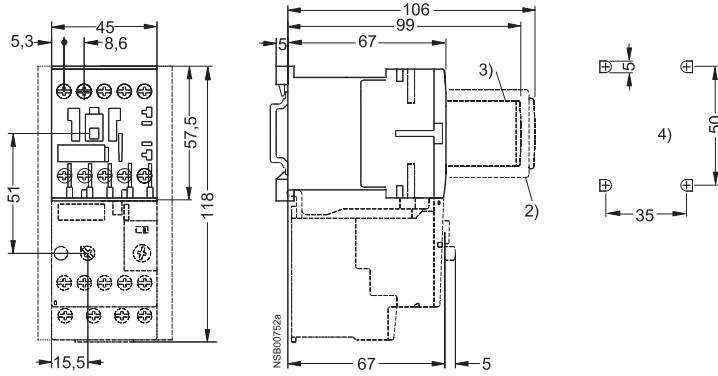
3RT10 contactors, 3-pole

Dimension drawings

3RT10 1 contactors

Size S00 and NEMA Size 0, screw connection
with surge suppressor, auxiliary switch block and mounted overload relay

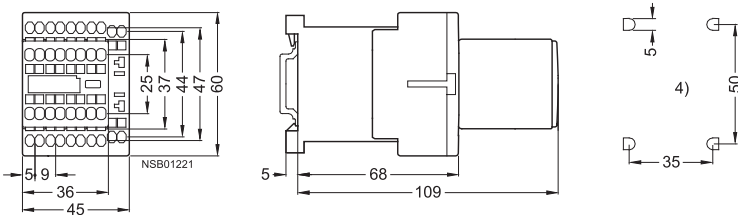
Lateral clearance from
earthed parts = 6 mm



- 2) Auxiliary switch block
(also 3RH19 11- . NF . . solid-state compatible design)
- 3) Surge suppressor
(also 3RT19 16-1GA00 additional load module)
- 4) Drilling pattern

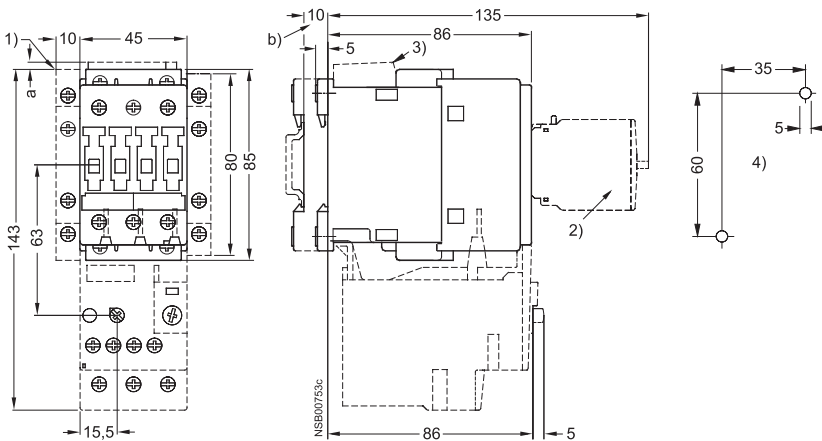
3RT10 1 contactors

Size S00, Cage Clamp connection
with auxiliary switch block



3RT10 2 contactors, 3RT10 2 coupling relays

Size S0 and NEMA Size 1, screw connection
with surge suppressor, auxiliary switch blocks and mounted overload relay



For size S0:

- a = 3 mm at < 240 V
- a = 7 mm at > 240 V
- b = DC 10 mm deeper than AC

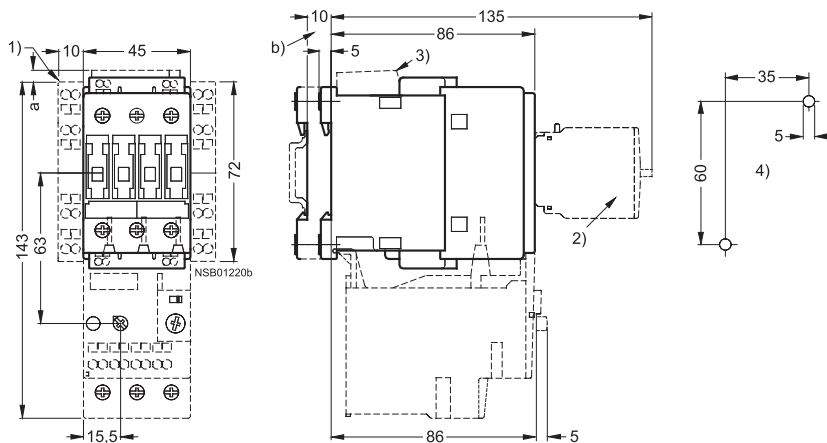
- 1) Auxiliary switch block, laterally mountable
- 2) Auxiliary switch block, mountable on the front,
1, 2 and 4-pole (also 3RH19 21- . FE22
solid-state compatible design)
- 3) Surge suppressor
- 4) Drilling pattern



Dimension drawings

3RT10 2 contactors, 3RT10 2 coupling relays

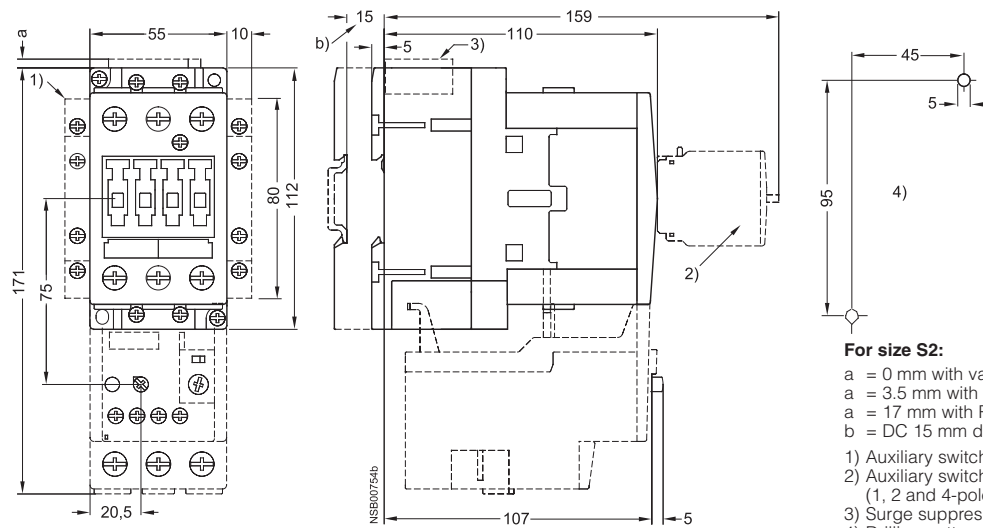
Size S0, Cage Clamp connection
with surge suppressor, auxiliary switch blocks and mounted overload relay



- For size S0:**
- a = 0 mm with varistor < 240 V, diode assembly
 - a = 3.5 mm with varistor > 240 V
 - a = 17 mm with RC element
 - b = DC 15 mm deeper than AC
- 1) Auxiliary switch block, laterally mountable
 - 2) Auxiliary switch block, mountable on the front (1, 2 and 4-pole)
 - 3) Surge suppressor
 - 4) Drilling pattern

3RT10 3 contactors

Size S2 and NEMA Size 2, screw connection
with surge suppressor, auxiliary switch blocks and mounted overload relay



- For size S2:**
- a = 0 mm with varistor < 240 V, diode assembly
 - a = 3.5 mm with varistor > 240 V
 - a = 17 mm with RC element
 - b = DC 15 mm deeper than AC
- 1) Auxiliary switch block, laterally mountable
 - 2) Auxiliary switch block, mountable on the front (1, 2 and 4-pole)
 - 3) Surge suppressor
 - 4) Drilling pattern

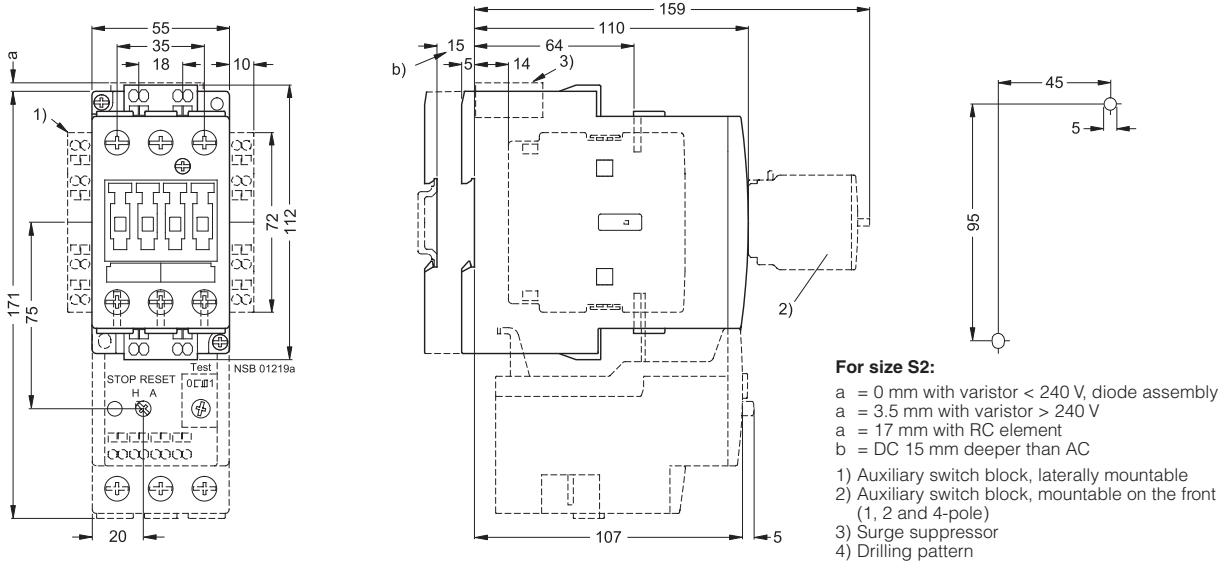


3RT10 and 3RT14 contactors, 3-pole

Dimension drawings

3RT10 3 contactors

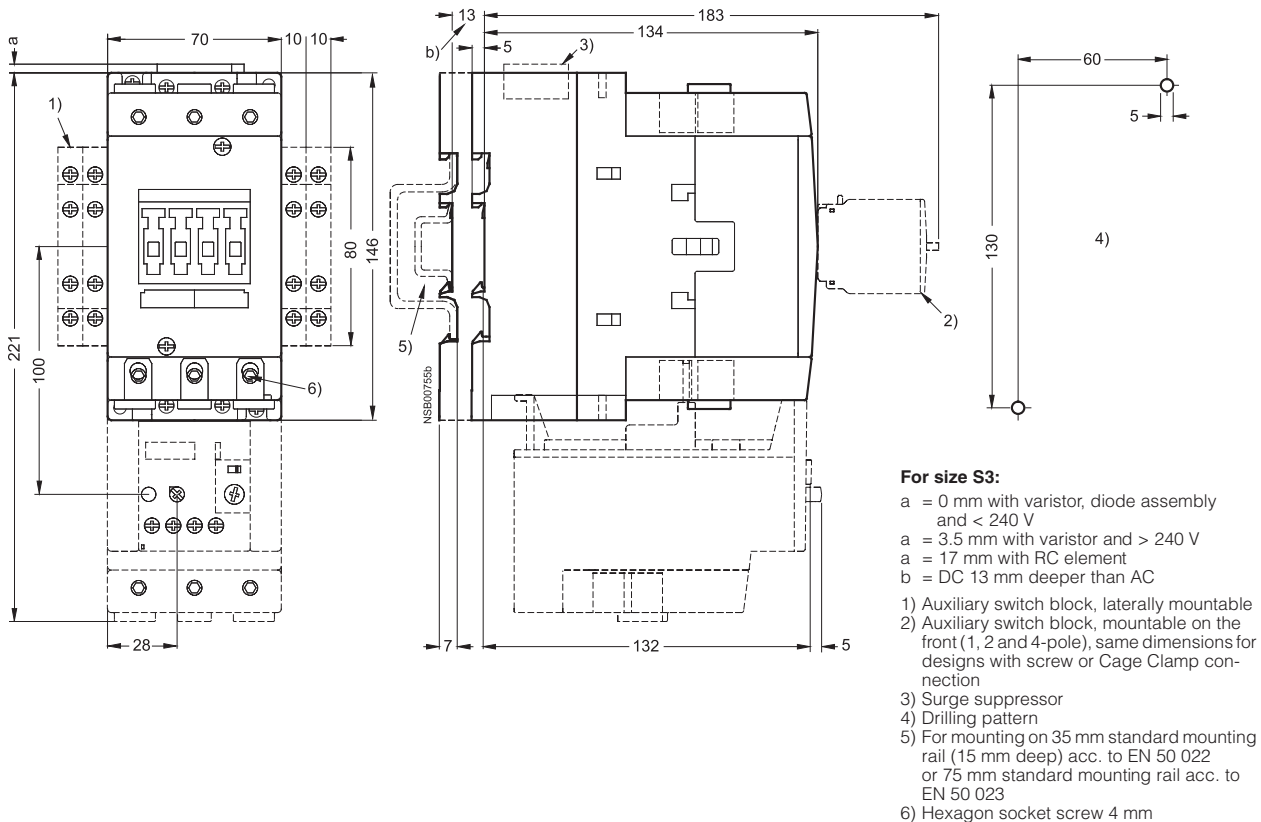
Size S2, Cage Clamp connection with surge suppressor, auxiliary switch blocks and mounted overload relay



3RT10 4, 3RT14 46 contactors

Size S3 and NEMA Size 3, screw connection with surge suppressor, auxiliary switch blocks and mounted overload relay

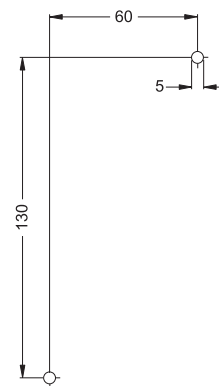
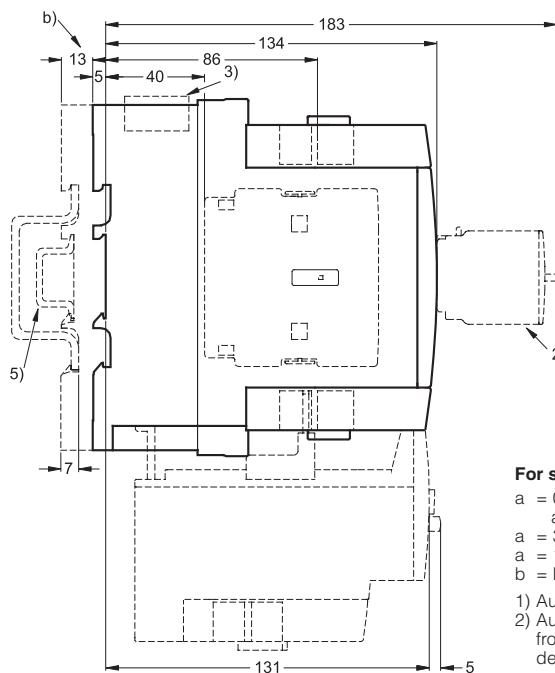
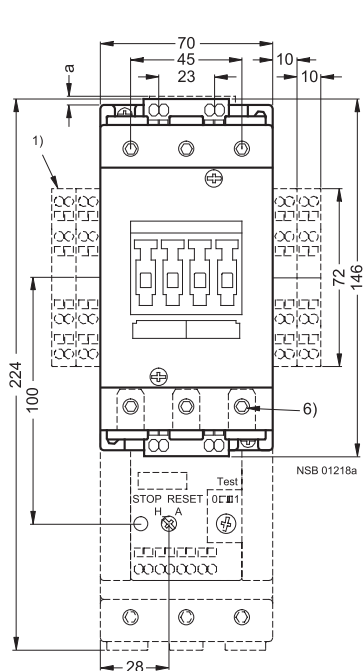
Lateral clearance from earthed parts = 6 mm





Dimension drawings

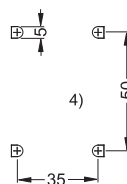
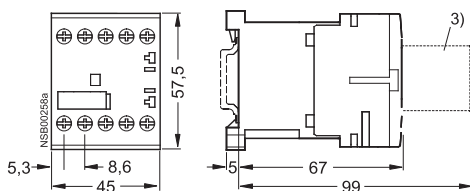
**3RT10 4 contactors,
Size S3,** Cage Clamp connection
with surge suppressor, auxiliary switch blocks
and mounted overload relay



For size S3:

- a = 0 mm with varistor, diode assembly and < 240 V
- a = 3.5 mm with varistor and > 240 V
- a = 17 mm with RC element
- b = DC 13 mm deeper than AC
- 1) Auxiliary switch block, laterally mountable
- 2) Auxiliary switch block, mountable on the front (1, 2 and 4-pole), same dimensions for designs with screw or Cage Clamp connection
- 3) Surge suppressor
- 4) Drilling pattern
- 5) For mounting on 35 mm standard mounting rail (15 mm deep) acc. to EN 50 022 or 75 mm standard mounting rail acc. to EN 50 023
- 6) Hexagon socket screw 4 mm

**3RT10 coupling relays
Size S00**
with surge suppressor



Deviating dimensions for coupling relays
with **Cage Clamp connection**:
Height: 60 mm

- 3) Surge suppressor
- 4) Drilling pattern



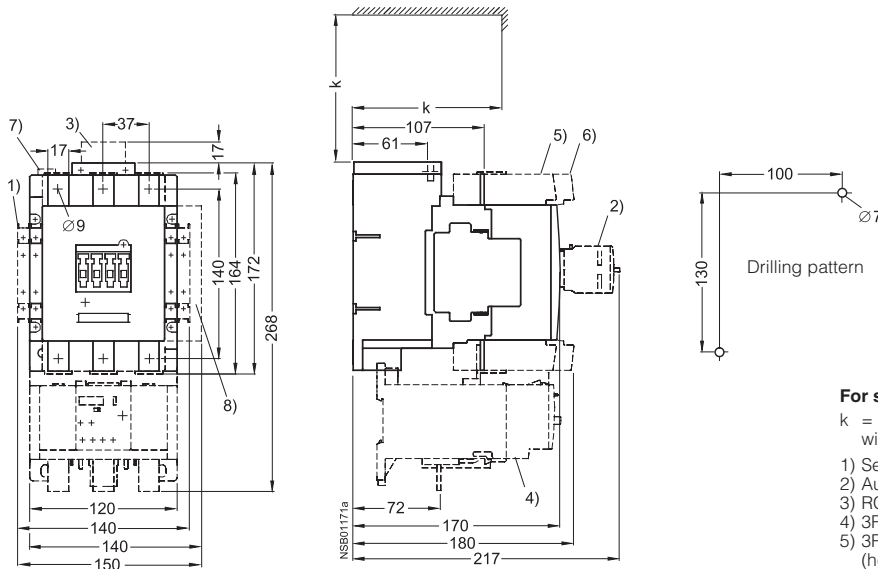
3RT10 and 3RT14 contactors, 3-pole

Dimension drawings

3RT10 5, 3RT14 5 contactors Size S6 and NEMA Size 4

with auxiliary switch block, laterally mountable and mountable on the front,
mounted overload relay and box terminals,
laterally mounted electronics module with remaining lifetime indication

Clearance from earthed parts with
directly mounted overload relay:
lateral: 10 mm
front: 20 mm



For size S6:

k = 120 mm (minimum clearance for removing the withdrawable coil)

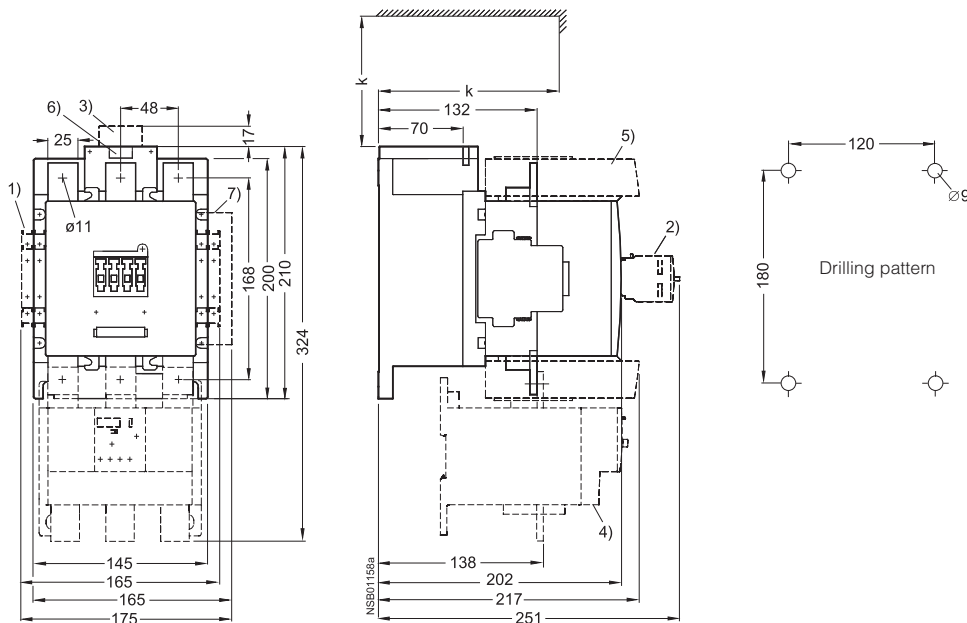
- 1) Second auxiliary switch block, laterally mountable
- 2) Auxiliary switch block, mountable on the front
- 3) RC element
- 4) 3RB10 overload relay, mounted
- 5) 3RT19 55-4G box terminal block (hexagon socket 4 mm)
- 6) 3RT19 56-4G box terminal block (hexagon socket 4 mm)
- 7) PLC connection DC 24 V and changeover switch (with 3RT1...-N)
- 8) Electronics module with remaining lifetime indication (auxiliary switch block not mountable on right-hand side)



Dimension drawings

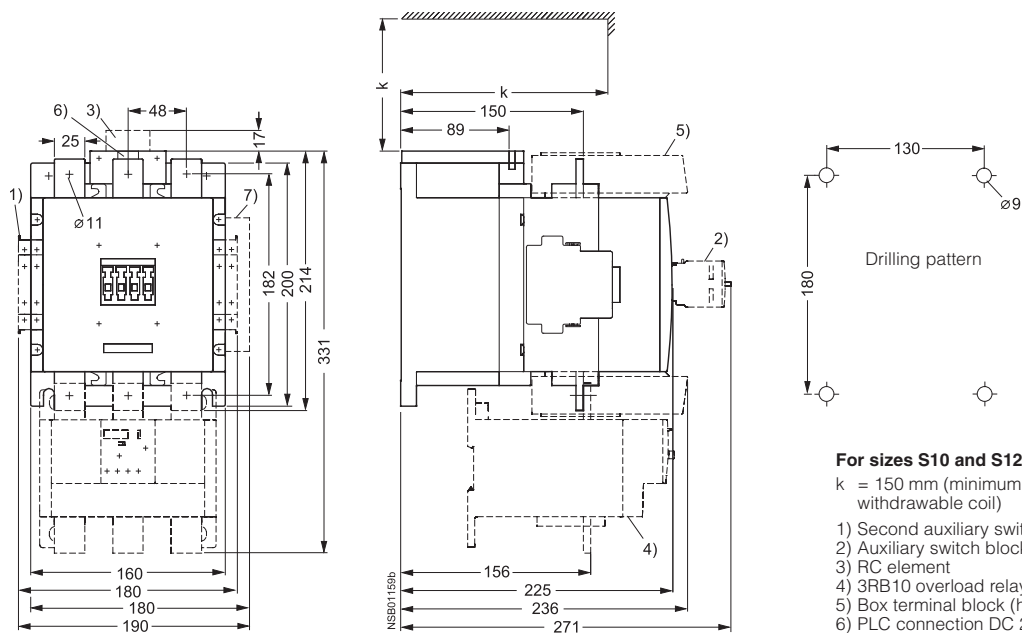
3RT10 6, 3RT14 6 contactors Size S10

with auxiliary switch block, laterally mountable and mountable on the front, mounted overload relay and box terminals, laterally mounted electronics module with remaining lifetime indication



3RT10 7, 3RT14 7 contactors Size S12

with auxiliary switch block, laterally mountable and mountable on the front, mounted overload relay and box terminals, laterally mounted electronics module with remaining lifetime indication



For sizes S10 and S12:

Clearance from earthed parts with directly mounted overload relay:
lateral: 10 mm
front: 20 mm

For sizes S10 and S12:

k = 150 mm (minimum clearance for removing the withdrawable coil)

- 1) Second auxiliary switch block, laterally mountable
- 2) Auxiliary switch block, mountable on the front
- 3) RC element
- 4) 3RB10 overload relay, mounted
- 5) Box terminal block (hexagon socket 6 mm)
- 6) PLC connection DC 24 V and changeover switch (with 3RT1...-N)
- 7) Electronics module with remaining lifetime indication (auxiliary switch block not mountable on right-hand side)