

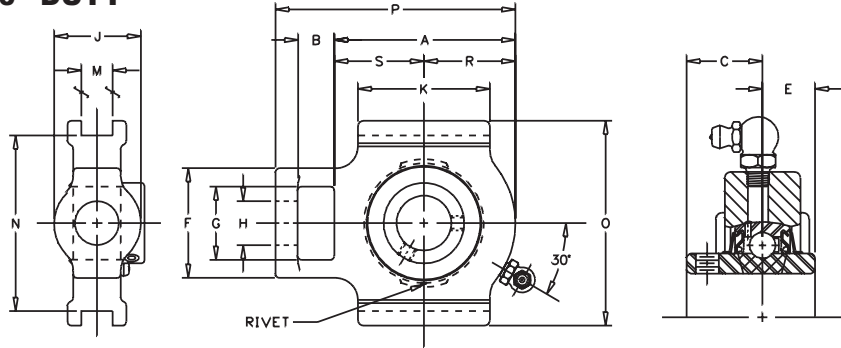
VTWS-200

Lock: Set Screw
Seal: Contact
Housing: Cast Iron
Temperature: -20°F to 200°F
Self Alignment: ±1.5°
Inserts: VS-200
 Dimensions pg 18
 Ratings pg 19

V VALUE & QUALITY
T TAKE-UP
W WIDE SLOT
S SET SCREW

2 200
0 NORMAL
0 DUTY

Bore Size	Fitting
1/2" - 1 1/4" S	1/4" - 28NF
1 1/4" - 2 7/16" S	1/8" NPT



SHAFT DIA. IN	UNIT NO.	BRG NO.	Dimensions In Inches															UNIT WT.
			A	B	C	E	F	G	H CORE	J HUB	K	M	N	O	P	R	S	
1/2	VTWS-208	VS-208	2 11/16	5/8	5/8	13/32	1 7/8	1 1/4	3/4	1 3/8	2	17/32	3	3 1/2	3 11/16	1 5/16	1 3/8	1.5
5/8	VTWS-210	VS-210																
3/4	VTWS-212	VS-212	3	5/8	23/32	1/2	1 7/8	1 1/4	3/4	1 3/8	2 1/4	17/32	3	3 1/2	4	1 7/16	1 9/16	1.7
7/8	VTWS-214	VS-214																
15/16	VTWS-215	VS-215	3 3/32	5/8	13/16	9/16	1 7/8	1 1/4	3/4	1 1/2	2 1/4	17/32	3	3 1/2	4 3/32	1 9/16	1 17/32	1.6
1	VTWS-216	VS-216																
1 1/8	VTWS-218	VS-218	3 3/8	3/4	7/8	5/8	2 1/8	1 7/16	7/8	1 3/4	2 1/2	17/32	3 1/2	4	4 5/8	1 25/32	1 19/32	2.4
1 3/16	VTWS-219	VS-219																
1 1/4	VTWS-220	VS-220																
1 3/8	VTWS-222	VS-222	3 3/4	3/4	1	11/16	2 1/8	1 7/16	7/8	1 3/4	2 3/4	17/32	3 1/2	4	5	2	1 3/4	3.3
1 7/16	VTWS-223	VS-223																
1 1/2	VTWS-224	VS-224	4 7/32	3/4	1 3/16	3/4	2 3/4	1 15/16	1 1/8	2 1/8	3 1/4	11/16	4	4 1/2	5 19/32	2 3/16	2 1/32	5.0
1 5/8	VTWS-226	VS-226																
1 11/16	VTWS-227	VS-227	4 3/8	3/4	1 3/16	3/4	2 3/4	1 15/16	1 1/8	2 1/8	3 1/4	11/16	4	4 1/2	5 3/4	2 1/4	2 1/8	5.6
1 3/4	VTWS-228	VS-228																
1 15/16	VTWS-231	VS-231	4 17/32	3/4	1 9/32	3/4	2 3/4	1 15/16	1 1/8	2 1/8	3 3/8	11/16	4	4 1/2	5 29/32	2 5/16	2 7/32	5.8
2	VTWS-232	VS-232																
2 3/16	VTWS-235	VS-235	5 3/32	1	1 5/16	7/8	3 5/8	2 1/2	1 3/8	2 1/2	3 3/4	1 1/16	5 1/8	5 3/4	6 27/32	2 9/16	2 17/32	8.4
2 7/16	VTWS-239	VS-239	5 1/2	1	1 9/16	1	3 5/8	2 1/2	1 3/8	2 1/2	4	1 1/16	5 1/8	5 3/4	7 1/4	2 27/32	2 21/32	9.3

CROSS REFERENCE TO COMPETITORS PRODUCTS

REPLACES DODGE WSTU-SC	REPLACES MB TC-25	REPLACES SKF TBY-TM	
FAFNIR YTU	REPLACES LINK-BELT TH3-U200N		

Refer to Interchange Section Page 166 for more detail.