

Set Screw



300

VF4S-300

Lock: Set Screw
 Seal: Contact
 Housing: Cast Iron
 Temperature: -20°F to 200°F
 Self Alignment: ±1.5°
 Inserts: VS-300
 Dimensions pg 26
 Ratings pg 27

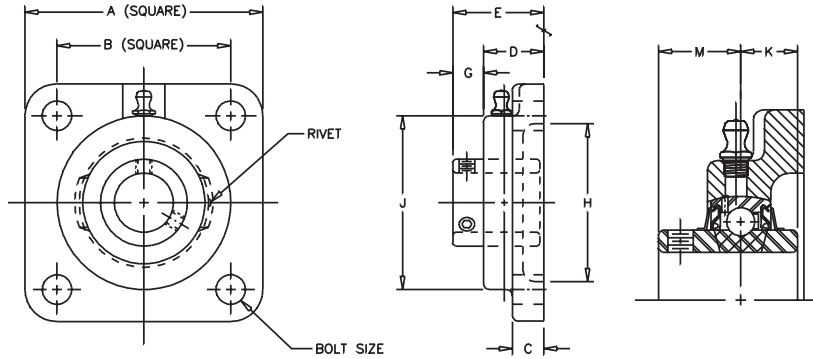
Bore Size	Fitting
1"	1/4" - 28NF
1 3/16" - 3 15/16" S	1/8" NPT

V VALUE & QUALITY
F FLANGE
4 FOUR BOLT
S SET SCREW

3 300
0 MEDIUM
0 DUTY

Browning®

Ball Bearings



SHAFT DIA. IN	UNIT NO.	BRG. NO.	Dimensions in Inches										BOLT SIZE IN.	UNIT WT.
			A	B	C	D	E	G	H CORED	J	K	M		
1	VF4S-316	VS-316	4 1/4	3 1/4	17/32	1 5/64	1 9/16	31/64	2 7/8	3 1/8	5/8	7/8	7/16	2.9
1 3/16	VF4S-319	VS-319	4 5/8	3 5/8	19/32	1 5/32	1 3/4	19/32	3 1/4	3 5/8	11/16	1	1/2	2.9
1 7/16	VF4S-323	VS-323	5 1/8	4	5/8	1 19/64	2 1/64	23/32	3 1/2	4 1/8	3/4	1 3/16	1/2	5.0
1 1/2	VF4S-324	VS-324	5 3/8	4 1/8	5/8	1 21/64	2 3/64	23/32	3 7/8	4 3/8	3/4	1 3/16	9/16	5.0
1 11/16	VF4S-327	VS-327	5 5/8	4 3/8	5/8	1 23/64	2 5/32	51/64	4	4 9/16	3/4	1 9/32	9/16	5.8
1 3/4	VF4S-328	VS-328	6 3/8	5 1/8	13/16	1 33/64	2 5/16	51/64	4 1/4	5 1/4	7/8	1 5/16	5/8	8.0
2	VF4S-332	VS-232	6 7/8	5 5/8	13/16	1 11/16	2 11/16	1	5	5 7/16	1	1 9/16	5/8	9.9
2 3/16	VF4S-335	VS-335	7 3/8	5 7/8	13/16	1 49/64	2 7/8	1 7/64	5 1/8	6 1/8	1 1/16	1 11/16	5/8	13.3
2 1/4	VF4S-336	VS-236	7 3/8	5 7/8	13/16	1 49/64	2 7/8	1 7/64	5 1/8	6 1/8	1 1/16	1 11/16	5/8	13.3
2 7/16	VF4S-339	VS-339	7 3/4	6	1	2 3/64	3 3/16	1 9/64	5 3/4	6 1/2	1 5/16	1 3/4	3/4	16.7
2 1/2	VF4S-340	VS-340	7 3/4	6	1	2 3/64	3 3/16	1 9/64	5 3/4	6 1/2	1 5/16	1 3/4	3/4	16.7
2 11/16	VF4S-343	VS-343	7 3/4	6	1	2 3/64	3 3/16	1 9/64	5 3/4	6 1/2	1 5/16	1 3/4	3/4	16.7
2 15/16	VF4S-347	VS-347	7 3/4	6	1	2 1/8	3 3/8	1 1/4	5 23/32	6 3/4	1 5/16	1 15/16	3/4	17.4
3	VF4S-348	VS-348	7 3/4	6	1	2 1/8	3 3/8	1 1/4	5 23/32	6 3/4	1 5/16	1 15/16	3/4	17.4
3 7/16	VF4S-355	VS-355	8 7/16	6 3/4	1 1/8	2 31/64	3 15/16	1 29/64	6 15/32	7 3/4	1 9/16	2 7/32	7/8	24.4
3 1/2	VF4S-356	VS-256	8 7/16	6 3/4	1 1/8	2 31/64	3 15/16	1 29/64	6 15/32	7 3/4	1 9/16	2 7/32	7/8	24.4
3 15/16	VF4S-363	VS-363	10 9/16	8 5/16	1 3/8	2 31/32	4 25/32	1 13/16	7 23/32	9 1/4	1 15/16	2 11/16	1	44.7

⊗ Air Handling (AH) To order specify AH suffix, i.e. VF4S-316 AH (See page 50)

CROSS REFERENCE TO COMPETITORS PRODUCTS

REPLACES DODGE F4B-SCM	REPLACES MB FC4-35	REPLACES SKF FYM-TM	REPLACES NTN UCFX
FAFNIR YCJM		REPLACES HUB CITY FB350**	REPLACES BOSTON MBF

Refer to Interchange Section Page 166 for more detail.
 **-Narrow length through bore