

Browning

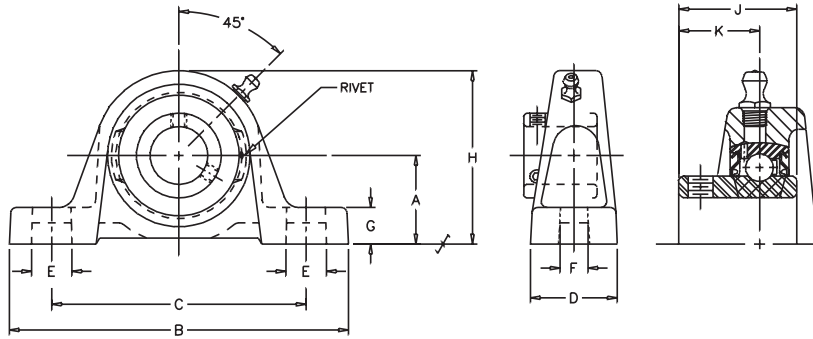
Ball Bearings

**VALUE & QUALITY V
PILLOW BLOCK P
LOW BASE L
SET SCREW S**

VPLS-100

**100 1
INTERMEDIATE 0
DUTY 0**

Lock: Set Screw
Seal: Contact
Housing: Cast Iron
Temperature: -20°F to 200°F
Self Alignment: ±1.5°
Inserts: VS-100
Dimension pg 47
Ratings pg 48



Bore Size	Fitting
1/2" - 1 1/4" S	1/4" - 28NF
1 1/4" - 2 3/16"	1/8" NPT

SHAFT DIA. IN	UNIT NO.	BRG NO.	Dimensions In Inches										BOLT SIZE IN.	UNIT WT.
			A	B	C	D	E	F	G	H	J	K		
1/2	VPLS-108	VS-108	1 1/16	4 7/8	3 5/8	1 7/32	7/8	7/16	11/32	2 3/32	15/16	5/8	3/8	.7
5/8	VPLS-110	VS-110												
3/4	VPLS-112	VS-112	1 1/4	5	3 25/32	1 11/32	25/32	7/16	15/32	2 15/32	1 1/16	23/32	3/8	1.3
7/8	VPLS-114	VS-114												
15/16	VPLS-115	VS-115	1 5/16	5 1/2	4 1/8	1 13/32	13/16	7/16	15/32	2 11/16	1 7/64	49/64	3/8	1.4
1	VPLS-116	VS-116												
1 1/8	VPLS-118	VS-118												
1 3/16	VPLS-119	VS-119	1 9/16	6 3/16	4 5/8	1 3/4	15/16	9/16	17/32	3 5/32	1 5/32	25/32	1/2	2.4
1 1/4	VPLS-120S	VS-120S												
1 1/4	VPLS-120	VS-120												
1 3/8	VPLS-122	VS-122	1 13/16	6 3/4	5	1 3/4	7/8	9/16	21/32	3 5/8	1 9/32	55/64	1/2	3.5
1 7/16	VPLS-123	VS-123												
1 1/2	VPLS-124	VS-124	1 15/16	7 1/8	5 3/8	1 15/16	1	9/16	3/4	3 15/16	1 27/64	15/16	1/2	4.5
1 11/16	VPLS-127	VS-127												
1 3/4	VPLS-128	VS-128	2 1/16	7 3/8	5 21/32	2	29/32	9/16	11/16	4 3/16	1 7/16	61/64	1/2	5.5
1 15/16	VPLS-131	VS-131												
2	VPLS-132S	VS-132S	2 3/16	8	6 3/16	2 3/16	15/16	11/16	11/16	4 1/2	1 35/64	1 3/64	5/8	5.9
2	VPLS-132	VS-132												
2 3/16	VPLS-135	VS-135	2 7/16	8 13/16	6 15/16	2 5/16	1	11/16	13/16	4 29/32	1 21/32	1 7/64	5/8	7.6

CROSS REFERENCE TO COMPETITORS PRODUCTS

REPLACES DODGE P2B-VSCB	REPLACES MB CL-25		REPLACES NTN ASPL 2
REPLACES FAFNIR SAK	REPLACES LINK-BELT PL3S 200E	REPLACES HUB CITY PB 250	

Refer to Interchange Section Page 166 for more detail.

See page 156 for trademark acknowledgments.

