



Ball Bearings

VALUE & QUALITY V
SET SCREW S

VS-100



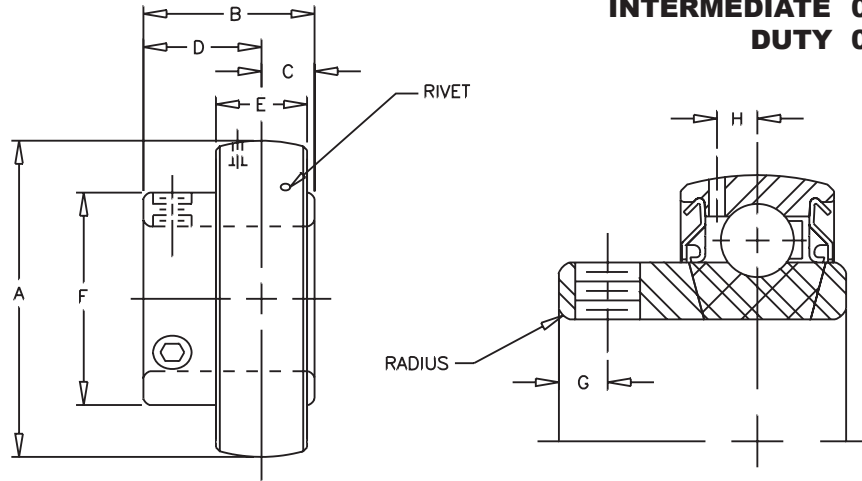
100

100 1

INTERMEDIATE 0

DUTY 0

Lock: Set Screw
Seal: Contact
Temperature: -20°F to 200°F
Ratings: Page 48



SHAFT DIA. IN	BRG NO.	Dimensions in Inches									SET SCREW TAP	UNIT WT.
		A	B	C	D	E	F	G	H	RADIUS		
1/2	VS-108	40MM	15/16	5/16	5/8	.512	31/32	5/32	9/64	.055	10-32	.3
5/8	VS-110	1.5748										
3/4	VS-112	47MM 1.8504	1 1/16	11/32	23/32	.591	1 3/16	3/16	5/32	.070	1/4-28	.4
7/8	VS-114	52MM	1 7/64	11/32	49/64	.591	1 3/8	3/16	5/32	.070	1/4-28	.5
15/16	VS-115	2.0472										
1	VS-116											
1 1/8	VS-118	62MM	1 5/32	3/8	25/32	.709	1 19/32	7/32	13/64	.080	1/4-28	.7
1 3/16	VS-119	2.4409										
1 1/4	VS-120S											
1 1/4	VS-120	72MM	1 9/32	27/64	55/64	.748	1 55/64	1/4	15/64	.080	5/16-24	1.0
1 3/8	VS-122	2.8346										
1 7/16	VS-123											
1 1/2	VS-124	80MM 3.1496	1 27/64	31/64	15/16	.866	2 1/16	9/32	17/64	.095	5/16-24	1.2
1 11/16	VS-127	85MM	1 7/16	31/64	61/64	.866	2 19/64	5/16	17/64	.110	5/16-24	1.4
1 3/4	VS-128	3.3465										
1 15/16	VS-131	90MM	1 35/64	1/2	1 3/64	.906	2 15/32	3/8	9/32	.110	3/8-24	1.6
2	VS-132S	3.5433										
2	VS-132	100MM	1 21/32	35/64	1 7/64	.984	2 23/32	3/8	5/16	.125	3/8-24	2.2
2 3/16	VS-135	3.9370										

CROSS REFERENCE TO COMPETITORS PRODUCTS

For insert interchange information, contact EPT Mounted Bearing Technical Support.
See page 260 for contact information.