

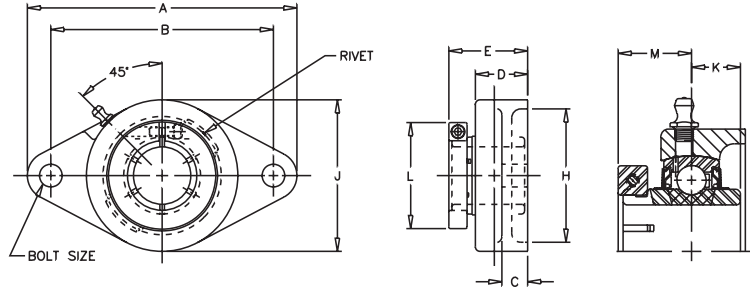


# VF2B-200

**Lock:** BOA Concentric  
**Seal:** Contact  
**Housing:** Cast Iron  
**Temperature:** -20°F to 200°F  
**Self Alignment:** +/-1.5  
**Inserts:** VB-200  
 Dimensions pg 62  
 Ratings pg 63

**V VALUE & QUALITY**  
**F FLANGE**  
**2 TWO BOLT**  
**B BOA**  
  
**2 200**  
**0 NORMAL**  
**0 DUTY**

Bore Size	Fitting
3/4" - 1 1/4" S	1/4" - 28NF
1 1/4" - 2 3/16"	1/8" NPT



SHAFT DIA. IN.	UNIT NO.	BRG NO.	Dimensions in Inches										BOLT SIZE IN.	UNIT WT.
			A	B	C	D	E	H CORED	J	K	L	M		
3/4	VF2B-212	VB-212	4 13/32	3 17/32	7/16	57/64	1 11/32	2	2 1/2	1/2	1 3/4	25/32	3/8	1.1
7/8	VF2B-214	VB-214												
15/16	VF2B-215	VB-215	4 7/8	3 57/64	1/2	61/64	1 1/2	2 5/16	2 3/4	9/16	1 15/16	7/8	7/16	1.3
1	VF2B-216	VB-216												
1 1/8	VF2B-218	VB-218												
1 3/16	VF2B-219	VE-219	5 9/16	4 19/32	17/32	1 5/64	1 5/8	2 3/4	3 1/8	5/8	2 1/2	15/16	7/16	2.0
1 1/4	VF2B-220S	VB-220S												
1 1/4	VF2B-220	VB-220									2 7/16			
1 3/8	VF2B-222	VB-222	6 1/8	5 1/8	19/32	1 5/32	1 13/16	3 3/16	3 5/8	11/16	2 9/16	1 1/16	1/2	3.0
1 7/16	VF2B-223	VB-223												
1 1/2	VF2B-224	VB-224	6 3/4	5 21/32	5/8	1 19/64	2 5/64	3 1/2	4 1/8	3/4	2 11/16	1 1/4	1/2	3.3
1 5/8	VF2B-226	VB-226									2 13/16			
1 11/16	VF2B-227	VB-227	7 1/16	5 27/32	5/8	1 21/64	2 7/64	3 3/4	4 3/8	3/4	2 15/16	1 1/4	9/16	4.0
1 3/4	VF2B-228	VB-228												
1 15/16	VF2B-231	VB-231	7 7/16	6 3/16	5/8	1 23/64	2 7/32	4	4 9/16	3/4	3 3/8	1 11/32	9/16	4.2
2	VF2B-232S	VB-232S												
2	VF2B-232	VB-232	8 1/2	7 1/4	13/16	1 33/64	2 3/8	4 1/4	5 1/4	7/8	3 1/2	1 3/8	5/8	7.1
2 3/16	VF2B-235	VB-235									3 5/8			

## CROSS REFERENCE TO COMPETITORS PRODUCTS

REPLACES DODGE F2B-DL	REPLACES MB KFC2-45/25		

Refer to Interchange Section Page 166 for more detail.