

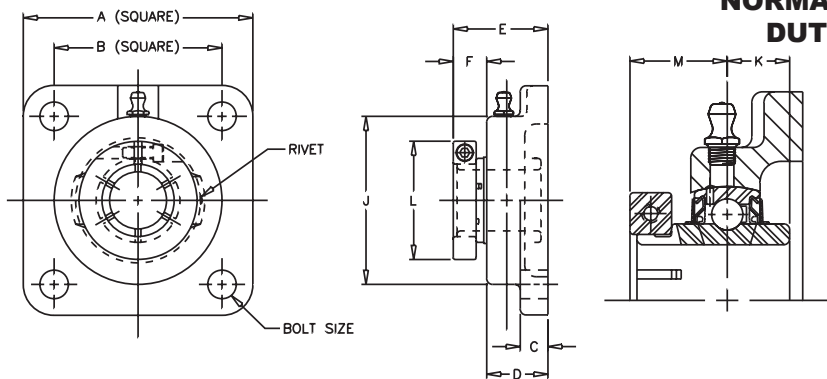


**BOA CONCENTRIC**

**VALUE & QUALITY V**  
**FLANGE F**  
**FOUR BOLT 4**  
**BOA B**  
**200 2**  
**NORMAL 0**  
**DUTY 0**

# VF4B-200

**Lock:** BOA Concentric  
**Seal:** Contact  
**Housing:** Cast Iron  
**Temperature:** -20°F to 200°F  
**Self Alignment:** ±1.5°  
**Inserts:** VB-200  
 Dimensions pg 62  
 Ratings pg 63



Bore Size	Fitting
3/4" - 1 1/4" S	1/4" - 28NF
1 1/4" - 2 7/16"	1/8" NPT

SHAFT DIA. IN.	UNIT NO.	BRG. NO.	Dimensions In Inches										BOLT SIZE IN.	UNIT WT.
			A	B	C	D	E	F	J	K	L	M		
3/4	VF4B-212	VB-212	3 3/8	2 1/2	7/16	57/64	1 11/32	29/64	2 1/2	1/2	1 3/4	25/32	3/8	1.5
7/8	VF4B-214	VB-214												
15/16	VF4B-215	VB-215	3 3/4	2 3/4	1/2	61/64	1 1/2	35/64	2 3/4	9/16	1 15/16	7/8	7/16	1.8
1	VF4B-216	VB-216												
1 1/8	VF4B-218	VB-218												
1 3/16	VF4B-219	VB-219	4 1/4	3 1/4	17/32	1 5/64	1 5/8	35/64	3 1/8	5/8	2 3/16	15/16	7/16	2.8
1 1/4	VF4B-220S	VB-220S												
1 1/4	VF4B-220	VB-220									2 7/16			
1 3/8	VF4B-222	VB-222	4 5/8	3 5/8	19/32	1 5/32	1 13/16	21/32	3 5/8	11/16	2 9/16	1 1/16	1/2	3.9
1 7/16	VF4B-223	VB-223												
1 1/2	VF4B-224	VB-224	5 1/8	4	5/8	1 19/64	2 5/64	25/32	4 1/8	3/4	2 11/16	1 1/4	1/2	5.2
1 5/8	VF4B-226	VB-226									2 13/16			
1 11/16	VF4B-227	VB-227	5 3/8	4 1/8	5/8	1 21/64	2 7/64	25/32	4 3/8	3/4	2 15/16	1 1/4	9/16	5.5
1 3/4	VF4B-228	VB-228												
1 15/16	VF4B-231	VB-231	5 5/8	4 3/8	5/8	1 23/64	2 7/32	55/64	4 9/16	3/4	3 3/8	1 11/32	9/16	6.2
2	VF4B-232S	VB-232S												
2	VF4B-232	VB-232									3 1/2			
2 3/16	VF4B-235	VB-235	6 3/8	5 1/8	13/16	1 33/64	2 3/8	55/64	5 1/4	7/8	3 5/8	1 3/8	5/8	8.5
2 1/4	VF4B-236	VB-236									4 1/16			
2 7/16	VF4B-239	VB-239	6 7/8	5 5/8	13/16	1 11/16	2 3/4	1 1/16	5 7/16	1	4 1/8	1 5/8	5/8	10.8

## CROSS REFERENCE TO COMPETITORS PRODUCTS

REPLACES DODGE F4B-DL	REPLACES MB KFC4-45/25		

Refer to Interchange Section Page 166 for more detail.