



200

Browning[®]

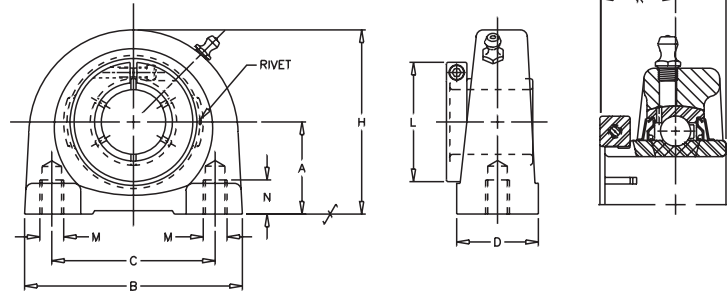
BOA CONCENTRIC

VTBB-200

Lock: BOA Concentric
Seal: Contact
Housing: Cast Iron
Temperature: -20°F to 200°F
Self Alignment: ±1.5°
Inserts: VB-200
 Dimensions pg 62
 Ratings pg 63

V VALUE & QUALITY
T TAPPED
B BASE
B BOA
2 200
0 NORMAL
0 DUTY

Bore Size	Fitting
3/4" - 1 1/4" S	1/4" - 28NF
1 1/4" - 2"	1/8" NPT



SHAFT DIA. IN.	UNIT NO.	BRG. NO.	Dimensions In Inches								M BOLT HOLES UNC-THREAD	N MIN TAP DEPTH	UNIT WT.
			A	B	C	D	H	J	K	L			
3/4	VTBB-212	VB-212	1 5/16	2 7/8	2	1 1/2	2 9/16	1 9/32	25/32	1 3/4	3/8-16	1/2	1.7
7/8	VTBB-214	VB-214											
15/16	VTBB-215	VB-215	1 7/16	3	2	1 1/2	2 13/16	1 7/16	7/8	1 15/16	3/8-16	1/2	1.8
1	VTBB-216	VB-216											
1 1/8	VTBB-218	VB-218											
1 3/16	VTBB-219	VB-219	1 11/16	4	3	1 1/2	3 3/8	1 9/16	15/16	2 3/16	7/16-14	5/8	2.8
1 1/4	VTBB-220S	VB-220S											
1 1/4	VTBB-220	VB-220								2 7/16			
1 3/8	VTBB-222	VB-222	1 7/8	4 1/4	3 1/4	1 7/8	3 3/4	1 3/4	1 1/16	2 9/16	1/2-13	3/4	4
1 7/16	VTBB-223	VB-223											
1 1/2	VTBB-224	VB-224	1 15/16	4 5/8	3 1/2	1 7/8	3 15/16	2	1 1/4	2 11/16	1/2-13	3/4	4.5
1 5/8	VTBB-226	VB-226								2 13/16			
1 11/16	VTBB-227	VB-227	2 1/8	5	3 3/4	2	4 1/4	2	1 1/4	2 15/16	1/2-13	3/4	5.6
1 3/4	VTBB-228	VB-228											
1 15/16	VTBB-231	VB-231											
2	VTBB-232S	VB-232S	2 1/4	5 1/2	4	2	4 5/8	2 3/32	1 11/32	3 3/8	5/8-11	7/8	6.9

CROSS REFERENCE TO COMPETITORS PRODUCTS

REPLACES DODGE TB-DL			

Refer to Interchange Section Page 166 for more detail.

