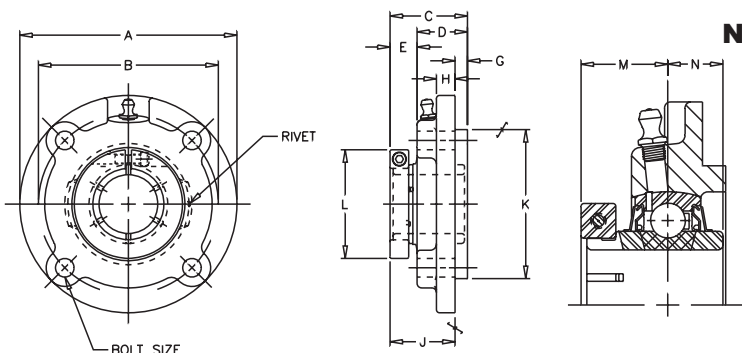


200

VALUE & QUALITY V
 FLANGE F
 CARTRIDGE C
 BOA B
 200 2
 NORMAL 0
 DUTY 0

VFCB-200

Lock: BOA Concentric
 Seal: Contact
 Housing: Cast Iron
 Temperature: -20°F to 200°F
 Self Alignment: ±1.5°
 Inserts: VB-200
 Dimensions pg 62
 Ratings pg 63



Bore Size	Fitting
1 1/8" - 2 3/16"	1/4" - 28NF
2 1/4" - 2 7/16"	1/8" NPT

SHAFT DIA. IN.	UNIT NO.	BRG. NO.	Dimensions in Inches													BOLT SIZE IN.	UNIT WT.
			A	B	C	D	E	G	H	J	K*	L	M	N			
1 1/8	VFCB-218	VB-218	4 3/8	3 5/8	1 9/16	1 1/64	35/64	1/4	3/8	1 5/16	3	2 3/16	15/16	5/8	5/16	2.6	
1 3/16	VFCB-219	VB-219															
1 1/4	VFCB-220	VB-220	5	4 1/8	1 3/4	1 3/32	21/32	3/8	3/8	1 3/8	3 3/8	2 7/16	1 1/16	11/16	3/8	3.5	
1 3/8	VFCB-222	VB-222										2 9/16					
1 7/16	VFCB-223	VB-223															
1 1/2	VFCB-224	VB-224	5 1/4	4 3/8	2	1 7/32	25/32	7/16	3/8	1 9/16	3 5/8	2 11/16	1 1/4	3/4	3/8	3.9	
1 5/8	VFCB-226	VB-226										2 13/16					
1 11/16	VFCB-227	VB-227	6 1/8	5 1/8	2	1 7/32	25/32	7/16	3/8	1 9/16	4 1/4	2 15/16	1 1/4	3/4	7/16	5.2	
1 3/4	VFCB-228	VB-228															
1 15/16	VFCB-231	VB-231	6 1/8	5 1/8	2 1/8	1 17/64	55/64	15/32	3/8	1 21/32	4 1/4	3 3/8	1 11/32	3/4	7/16	6.3	
2	VFCB-232S	VB-232S															
2	VFCB-232	VB-232	6 3/8	5 3/8	2 17/64	1 13/32	55/64	5/8	3/8	1 41/64	4 1/2	3 1/2	1 3/8	7/8	7/16	6.6	
2 3/16	VFCB-235	VB-235										3 5/8					
2 1/4	VFCB-236	VB-236	7 1/8	6	2 15/16	1 7/8	1 1/16	7/8	1/2	2 1/16	5	4 1/16	1 5/8	1	1/2	8.3	
2 7/16	VFCB-239	VB-239										4 1/8					

*Tolerance ±.001"

CROSS REFERENCE TO COMPETITORS PRODUCTS

REPLACES DODGE TB-DL			

Refer to Interchange Section Page 166 for more detail.

See page 156 for trademark acknowledgments.