



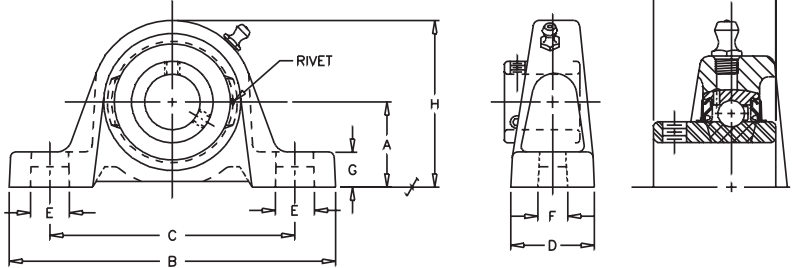
# Ball Bearings VALUE and QUALITY V PILLOW BLOCK P LOW BASE L SET SCREW S

**200 2**  
**NORMAL 0**  
**DUTY 0**

# VPLS-200

**Lock:** Set Screw  
**Seal:** Contact  
**Housing:** Cast Iron  
**Temperature:** -20°F to 200°F  
**Self Alignment:** ±1.5°  
**Inserts:** VS-200  
Dimensions pg 18  
Ratings pg 19

Bore Size	Fitting
1/2" - 1 1/4" S	1/4" - 28NF
1 1/4" - 2 15/16"	1/8" NPT



SHAFT DIA. IN	UNIT NO.	BRG. NO.	Dimensions In Inches										BOLT SIZE IN.	UNIT WT.
			A	B	C	D	E	F	G	H	J	K		
1/2	VPLS-208	VS-208	1 1/16	4 7/8	3 5/8	1 7/32	7/8	7/16	11/32	2 3/32	1 1/32	13/32	3/8	.7
5/8	VPLS-210	VS-210												
3/4	VPLS-212	VS-212	1 1/4	5	3 25/32	1 11/32	25/32	7/16	15/32	2 15/32	1 7/32	1/2	3/8	1.3
7/8	VPLS-214	VS-214												
15/16	VPLS-215	VS-215	1 5/16	5 1/2	4 1/8	1 13/32	13/16	7/16	15/32	2 11/16	1 3/8	9/16	3/8	1.4
1	VPLS-216	VS-216												
1 1/8	VPLS-218	VS-218												
1 3/16	VPLS-219	VS-219	1 9/16	6 3/16	4 5/8	1 3/4	15/16	9/16	17/32	3 5/32	1 1/2	5/8	1/2	2.4
1 1/4	VPLS-220S	VS-220S												
1 1/4	VPLS-220	VS-220												
1 3/8	VPLS-222	VS-222	1 13/16	6 3/4	5	1 3/4	7/8	9/16	21/32	3 5/8	1 11/16	11/16	1/2	3.5
1 7/16	VPLS-223	VS-223												
1 1/2	VPLS-224	VS-224	1 15/16	7 1/8	5 3/8	1 15/16	1	9/16	3/4	3 15/16	1 15/16	3/4	1/2	4.5
1 5/8	VPLS-226	VS-226												
1 11/16	VPLS-227	VS-227	2 1/16	7 3/8	5 21/32	2	29/32	9/16	11/16	4 3/16	1 15/16	3/4	1/2	5.5
1 3/4	VPLS-228	VS-228												
1 15/16	VPLS-231	VS-231	2 3/16	8	6 3/16	2 3/16	15/16	11/16	11/16	4 1/2	2 1/32	3/4	5/8	5.9
2	VPLS-232S													
2	VPLS-232	VS-232	2 7/16	8 13/16	6 15/16	2 5/16	1	11/16	13/16	4 29/32	2 3/16	7/8	5/8	7.6
2 3/16	VPLS-235	VS-235												
2 1/4	VPLS-236	VS-236	2 11/16	9 1/2	7 13/32	2 3/8	1 5/32	11/16	13/16	5 1/2	2 9/16	1	5/8	9.7
2 7/16	VPLS-239	VS-239												
2 11/16	VPLS-243	VS-243	3	10 3/4	8 1/4	2 11/16	1 3/8	13/16	15/16	6 3/16	2 3/4	1 1/16	3/4	12.5
2 15/16	VPLS-247	VS-247	3 1/4	12	9 1/2	2 7/8	1 1/4	15/16	15/16	6 9/16	3 1/16	1 5/16	7/8	16.9

⊗ Air Handling (AH) to order specify AH suffix, i.e. VPLS-216 AH (See page 50)

## CROSS REFERENCE TO COMPETITORS PRODUCTS

REPLACES DODGE P2B-SCB		REPLACES SKF SYH-TM	REPLACES NTN UCPL2
REPLACES FAFNIR YAK	REPLACES LINK-BELT PL3-U200N	REPLACES HUB CITY P250 HW*	REPLACES BOSTON SL

Refer to Interchange Section Page 166 for more detail.

\*-Malleable Casting

See page 156 for trademark acknowledgments.