



Ball Bearings

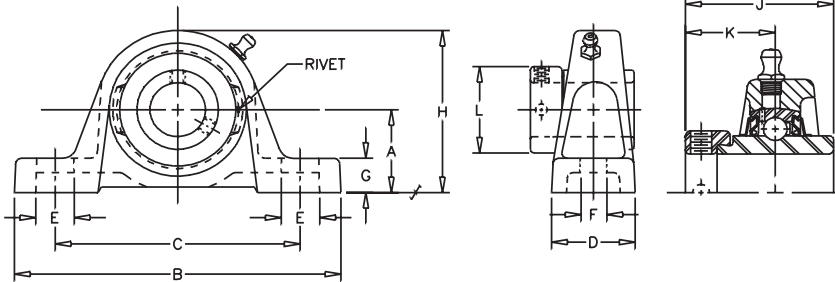
VALUE & QUALITY V
PILLOW BLOCK P
LOW BASE L
ECCENTRIC E

200 2
NORMAL 0
DUTY 0

VPLE-200

Lock: Eccentric
Seal: Contact
Housing: Cast Iron
Temperature: -20°F to 200°F
Self Alignment: ±1.5°
Inserts: VE-200
 Dimensions pg 78
 Ratings pg 79

Bore Size	Fitting
1/2" - 1 1/4" S	1/4" - 28NF
1 1/4" - 2 15/16"	1/8" NPT



SHAFT DIA. IN	UNIT NO.	BRG. NO.	Dimensions in Inches											BOLT SIZE IN.	UNIT WT.
			A	B	C	D	E	F	G	H	J	K	L		
1/2	VPLE-208	VE-208	1 1/16	4 7/8	3 5/8	1 7/32	7/8	7/16	11/32	2 3/32	1 15/32	59/64	1 3/16	3/8	.8
5/8	VPLE-210	VE-210	1 1/4	5	3 25/32	1 11/32	25/32	7/16	15/32	2 15/32	1 23/32	1 3/64	1 5/16	3/8	1.4
3/4	VPLE-212	VE-212	1 1/4	5	3 25/32	1 11/32	25/32	7/16	15/32	2 15/32	1 23/32	1 3/64	1 5/16	3/8	1.4
7/8	VPLE-214	VE-214	1 5/16	5 1/2	4 1/8	1 13/32	13/16	7/16	15/32	2 11/16	1 3/4	1 1/16	1 1/2	3/8	1.7
15/16	VPLE-215	VE-215	1 5/16	5 1/2	4 1/8	1 13/32	13/16	7/16	15/32	2 11/16	1 3/4	1 1/16	1 1/2	3/8	1.7
1	VPLE-216	VE-216	1 5/16	5 1/2	4 1/8	1 13/32	13/16	7/16	15/32	2 11/16	1 3/4	1 1/16	1 1/2	3/8	1.7
1 1/8	VPLE-218	VE-218	1 9/16	6 3/16	4 5/8	1 3/4	15/16	9/16	17/32	3 5/32	1 29/32	1 3/16	1 3/4	1/2	2.8
1 3/16	VPLE-219	VE-219	1 9/16	6 3/16	4 5/8	1 3/4	15/16	9/16	17/32	3 5/32	1 29/32	1 3/16	1 3/4	1/2	2.8
1 1/4	VPLE-220S	VE-220S	1 1/4	5	3 25/32	1 11/32	25/32	7/16	15/32	2 15/32	1 23/32	1 3/64	1 5/16	3/8	1.4
1 1/4	VPLE-220	VE-220	1 13/16	6 3/4	5	1 3/4	7/8	9/16	21/32	3 5/8	2 1/64	1 9/32	2 3/16	1/2	3.7
1 3/8	VPLE-222	VE-222	1 13/16	6 3/4	5	1 3/4	7/8	9/16	21/32	3 5/8	2 1/64	1 9/32	2 3/16	1/2	3.7
1 7/16	VPLE-223	VE-223	1 13/16	6 3/4	5	1 3/4	7/8	9/16	21/32	3 5/8	2 1/64	1 9/32	2 3/16	1/2	3.7
1 1/2	VPLE-224	VE-224	1 15/16	7 1/8	5 3/8	1 15/16	1	9/16	3/4	3 15/16	2 7/32	1 3/8	2 3/8	1/2	4.8
1 5/8	VPLE-226	VE-226	2 1/16	7 3/8	5 21/32	2	29/32	9/16	11/16	4 3/16	2 7/32	1 3/8	2 1/2	1/2	5.6
1 11/16	VPLE-227	VE-227	2 1/16	7 3/8	5 21/32	2	29/32	9/16	11/16	4 3/16	2 7/32	1 3/8	2 1/2	1/2	5.6
1 3/4	VPLE-228	VE-228	2 3/16	8	6 3/16	2 3/16	15/16	11/16	11/16	4 1/2	2 15/32	1 1/2	2 3/4	5/8	6.2
1 15/16	VPLE-231	VE-231	2 3/16	8	6 3/16	2 3/16	15/16	11/16	11/16	4 1/2	2 15/32	1 1/2	2 3/4	5/8	6.2
2	VPLE-232	VE-232	2 7/16	8 13/16	6 15/16	2 5/16	1	11/16	13/16	4 29/32	2 13/16	1 23/32	3	5/8	7.9
2 3/16	VPLE-235	VE-235	2 7/16	8 13/16	6 15/16	2 5/16	1	11/16	13/16	4 29/32	2 13/16	1 23/32	3	5/8	7.9
2 1/4	VPLE-236	VE-236	2 11/16	9 1/2	7 13/32	2 3/8	1 5/32	11/16	13/16	5 1/2	3 1/16	1 27/32	3 3/8	5/8	10.0
2 7/16	VPLE-239	VE-239	2 11/16	9 1/2	7 13/32	2 3/8	1 5/32	11/16	13/16	5 1/2	3 1/16	1 27/32	3 3/8	5/8	10.0
2 11/16	VPLE-243	VE-243	3	10 3/4	8 1/4	2 11/16	1 3/8	13/16	15/16	6 3/16	3 3/8	2 1/32	3 13/16	3/4	18.5
2 15/16	VPLE-247	VE-247	3 1/4	12	9 1/2	2 7/8	1 1/4	15/16	15/16	6 9/16	3 5/8	2 5/32	4	7/8	19.5

⊗ Air Handling (AH) To order specify AH suffix, i.e. VPLE-216 AH, See page 50

CROSS REFERENCE TO COMPETITORS PRODUCTS

REPLACES DODGE P2B-SXRB	REPLACES SKF SYH-WM		REPLACES NTN UEL PL2
REPLACES FAFNIR RAK	REPLACES LINK-BELT PL3Y200N	REPLACES HUB CITY PB 220HW*	

Refer to Interchange Section Page 166 for more detail.
 *-Malleable Casting

See page 156 for trademark acknowledgments.