



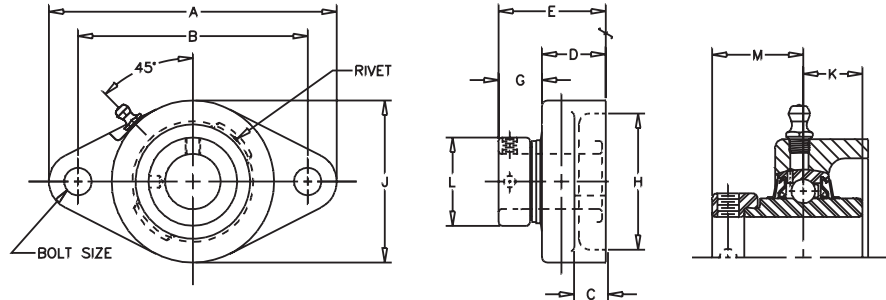
VF2E-200

V VALUE & QUALITY
F FLANGE
2 TWO BOLT
E ECCENTRIC

2 200
0 NORMAL
0 DUTY

Lock: Eccentric
Seal: Contact
Housing: Cast Iron
Temperature: -20°F to 200°F
Self Alignment: ±1.5°
Inserts: VE-200
 Dimensions pg 78
 Ratings pg 79

Bore Size	Fitting
1/2" - 1 1/4" S	1/4" - 28NF
1 1/4" - 2 15/16"	1/8" NPT



SHAFT DIA. IN	UNIT NO.	BRG NO.	Dimensions In Inches											BOLT SIZE IN.	UNIT WT.
			A	B	C	D	E	G	H CORED	J	K	L	M		
1/2	VF2E-208	VE-208	3 7/8	3	1/2	1 1/32	1 43/64	41/64	1 3/4	2 3/8	35/64	1 3/16	59/64	3/8	1.0
5/8	VF2E-210	VE-210													
3/4	VF2E-212	VE-212	4 13/32	3 17/32	1/2	1 5/64	1 51/64	23/32	2	2 3/8	43/64	1 5/16	1 3/64	3/8	1.1
7/8	VF2E-214	VE-214													
15/16	VF2E-215	VE-215	4 7/8	3 57/64	17/32	1 5/64	1 13/16	47/64	2 5/16	2 3/4	11/16	1 1/2	1 1/16	7/16	1.5
1	VF2E-216	VE-216													
1 1/8	VF2E-218	VE-218													
1 3/16	VF2E-219	VE-219	5 9/16	4 19/32	17/32	1 13/64	2	51/64	2 3/4	3 1/8	23/32	1 3/4	1 3/16	7/16	2.1
1 1/4	VF2E-220S	VE-220S													
1 1/4	VF2E-220	VE-220													
1 3/8	VF2E-222	VE-222	6 1/8	5 1/8	5/8	1 1/4	2 1/8	7/8	3 3/16	3 5/8	3/4	2 3/16	1 9/32	1/2	2.9
1 7/16	VF2E-223	VE-223													
1 1/2	VF2E-224	VE-224	6 3/4	5 21/32	5/8	1 13/32	2 5/16	29/32	3 1/2	4 1/8	27/32	2 3/8	1 3/8	1/2	3.8
1 5/8	VF2E-226	VE-226													
1 11/16	VF2E-227	VE-227	7 1/16	5 27/32	5/8	1 13/32	2 5/16	29/32	3 3/4	4 3/8	27/32	2 1/2	1 3/8	9/16	3.9
1 3/4	VF2E-228	VE-228													
1 15/16	VF2E-231	VE-231	7 7/16	6 3/16	11/16	1 39/64	2 5/8	1 1/64	4	4 9/16	31/32	2 3/4	1 1/2	9/16	4.8
2	VF2E-232	VE-232													
2 7/16	VF2E-235	VE-235	8 1/2	7 1/4	13/16	1 49/64	2 31/32	1 13/64	4 1/4	5 1/4	1 3/32	3	1 23/32	5/8	6.2
2 1/4	VF2E-236	VE-236													
2 7/16	VF2E-239	VE-239	9 1/4	7 15/16	13/16	1 31/32	3 1/4	1 9/32	4 3/4	5 7/16	1 7/32	3 3/8	1 27/32	5/8	9.6
2 11/16	VF2E-243	VE-243	10 1/8	8 5/16	13/16	2 3/64	3 1/2	1 29/64	5 1/8	6 1/8	1 11/32	3 13/16	2 1/32	5/8	17.0
2 15/16	VF2E-247	VE-247	10 1/2	8 1/2	1	2 15/64	3 25/32	1 35/64	5 3/4	6 1/2	1 15/32	4	2 5/32	3/4	19.5

CROSS REFERENCE TO COMPETITORS PRODUCTS

REPLACES DODGE F2B-SXR		REPLACES SKF FYT-WM	REPLACES NTN UELFL2 or UELFL U2
REPLACES FAFNIR RCJT	REPLACES LINK-BELT FX3 Y200N	REPLACES HUB CITY FB220 HW*	

Refer to Interchange Section Page 166 for more detail.
 *-Malleable Casting