



Ball Bearings VALUE and QUALITY V

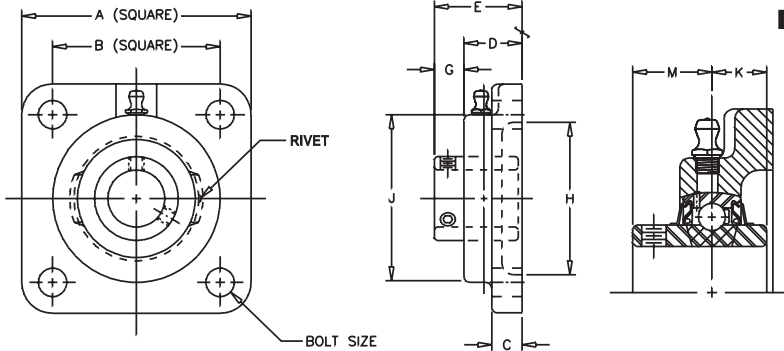
FLANGE F
FOUR BOLT 4
SET SCREW S

200 2
NORMAL 0
DUTY 0

VF4S-200

Lock: Set Screw
Seal: Contact
Housing: Cast Iron
Temperature: -20°F to 200°F
Self Alignment: ±1.5°
Inserts: VS-200
Dimensions pg 18
Ratings pg 19

Bore Size	Fitting
1/2" - 1 1/4" S	1/4" - 28NF
1 1/4" - 2 15/16"	1/8" NPT



SHAFT DIA. IN	UNIT NO.	BRG. NO.	Dimensions In Inches										BOLT SIZE IN.	UNIT WT.
			A	B	C	D	E	G	H CORED	J	K	M		
1/2	VF4S-208	VS-208	3	2 1/8	3/8	23/32	1 5/64	23/64	1 3/4	2 1/8	13/32	5/8	3/8	1.1
5/8	VF4S-210	VS-210	3	2 1/8	3/8	23/32	1 5/64	23/64	1 3/4	2 1/8	13/32	5/8	3/8	1.1
3/4	VF4S-212	VS-212	3 3/8	2 1/2	7/16	57/64	1 9/32	25/64	2	2 1/2	1/2	23/32	3/8	1.4
7/8	VF4S-214	VS-214												
15/16	VF4S-215	VS-215	3 3/4	2 3/4	1/2	61/64	1 7/16	31/64	2 1/2	2 3/4	9/16	13/16	7/16	1.6
1	VF4S-216	VS-216												
1 1/8	VF4S-218	VS-218												
1 3/16	VF4S-219	VS-219	4 1/4	3 1/4	17/32	1 5/64	1 9/16	31/64	2 7/8	3 1/8	5/8	7/8	7/16	2.6
1 1/4	VF4S-220S	VS-220S												
1 1/4	VF4S-220	VS-220												
1 3/8	VF4S-222	VS-222	4 5/8	3 5/8	19/32	1 5/32	1 3/4	19/32	3 1/4	3 5/8	11/16	1	1/2	3.6
1 7/16	VF4S-223	VS-223												
1 1/2	VF4S-224	VS-224	5 1/8	4	5/8	1 19/64	2 1/64	23/32	3 1/2	4 1/8	3/4	1 3/16	1/2	4.9
1 5/8	VF4S-226	VS-226												
1 11/16	VF4S-227	VS-227	5 3/8	4 1/8	5/8	1 21/64	2 3/64	23/32	3 7/8	4 3/8	3/4	1 3/16	9/16	5.2
1 3/4	VF4S-228	VS-228												
1 15/16	VF4S-231	VS-231	5 5/8	4 3/8	5/8	1 23/64	2 5/32	51/64	4	4 9/16	3/4	1 9/32	9/16	5.6
2	VF4S-232S	VS-232S												
2	VF4S-232	VS-232												
2 3/16	VF4S-235	VS-235	6 3/8	5 1/8	13/16	1 33/64	2 5/16	51/64	4 1/4	5 1/4	7/8	1 5/16	5/8	7.9
2 1/4	VF4S-236	VS-236												
2 7/16	VF4S-239	VS-239	6 7/8	5 5/8	13/16	1 11/16	2 11/16	1	5	5 7/16	1	1 9/16	5/8	9.6
2 11/16	VF4S-243	VS-243	7 3/8	5 7/8	13/16	1 49/64	2 7/8	1 7/64	5 1/8	6 1/8	1 1/16	1 11/16	5/8	13.1
2 15/16	VF4S-247	VS-247	7 3/4	6	1	2 3/64	3 3/16	1 9/64	5 3/4	6 1/2	1 5/16	1 3/4	3/4	16.4

Air Handling (AH) to order specify AH suffix, i.e. VF4S-216 AH (See page 50)

Nickel Plated (NK) to order specify NK suffix, i.e. VF4S-216 NK

CROSS REFERENCE TO COMPETITORS PRODUCTS

REPLACES DODGE F4B-SC		REPLACES SKF FY-TM	REPLACES NTN UCF2
REPLACES FAFNIR YCJ/RCJC	REPLACES LINK-BELT F3U200N	REPLACES HUB CITY FB250 HW*	

Refer to Interchange Section Page 166 for more detail
*-Malleable Casting

See page 156 for trademark acknowledgments.