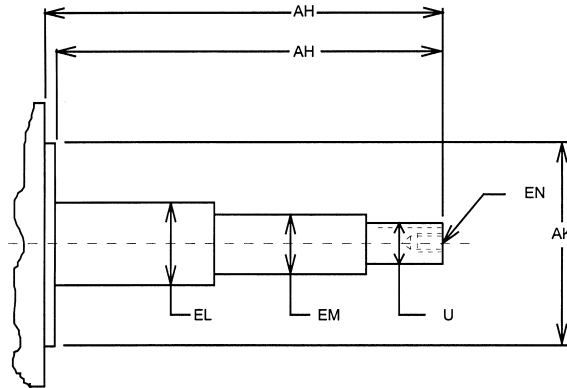


CLOSE COUPLED PUMP SHAFT DIMENSIONS



JP Shaft

Frame	AH	U	EM	EL	EN	AK	UT-1	D-1
							C	C
143	7.31	0.88	1.00	1.16	.38-16 x .75	4.50	16.75	16.38
145	7.31	0.88	1.00	1.16	.38-16 x .75	4.50	16.75	17.38
182	7.31	0.88	1.00	1.25	.38-16 x .75	4.50	20.81	19.13
184	7.31	0.88	1.00	1.25	.38-16 x .75	4.50	20.81	19.13
213	8.13	1.25	1.38	1.75	.50-13 x 1.00	8.50	23.63	21.25
215	8.13	1.25	1.38	1.75	.50-13 x 1.00	8.50	25.13	22.75
254	8.13	1.25	1.38	1.75	.50-13 x 1.00	8.50	28.25	25.00
256	8.13	1.25	1.38	1.75	.50-13 x 1.00	8.50	30.00	27.00
284	8.13	1.25	1.38	1.75	.50-13 x 1.00	12.50	30.50	27.50
286	8.13	1.25	1.38	1.75	.50-13 x 1.00	12.50	32.00	29.00
324	8.13	1.25	1.38	1.75	.50-13 x 1.00	12.50	-	30.38
326	8.13	1.25	1.38	1.75	.50-13 x 1.00	12.50	-	30.38

JM Shaft

Frame	AH	U	EM	EL	EN	AK	UT-4/UTE-4	D-4/DE-4
							C	C
143	4.25	0.88	1.00	1.16	.38-16 x .75	4.50	15.41	13.31
145	4.25	0.88	1.00	1.16	.38-16 x .75	4.50	15.41	14.31
182	4.25	0.88	1.00	1.25	.38-16 x .75	4.50	17.47	14.31
184	4.25	0.88	1.00	1.25	.38-16 x .75	4.50	18.47	14.31
213	4.25	0.88	1.00	1.25	.38-16 x .75	8.50	20.44	14.31
215	4.25	0.88	1.00	1.25	.38-16 x .75	8.50	21.94	14.31
254	5.25	1.25	1.38	1.75	.50-13 x 1.00	8.50	25.06	14.31
256	5.25	1.25	1.38	1.75	.50-13 x 1.00	8.50	26.81	14.31
284	5.25	1.25	1.38	1.75	.50-13 x 1.00	12.50	27.63	24.63
286	5.25	1.25	1.38	1.75	.50-13 x 1.00	12.50	29.13	26.13
324	5.25	1.25	1.38	1.75	.50-13 x 1.00	12.50	-	27.50
326	5.25	1.25	1.38	1.75	.50-13 x 1.00	12.50	-	27.50

West Coast Shaft

Frame	AH	U	EM	EL	EN	AK	UT-3	D-3
							C	C
213	7.31	0.88	1.00	1.25	.38-16 x .75	8.50	29.13	20.44
215	7.31	0.88	1.00	1.25	.38-16 x .75	8.50	29.13	21.94