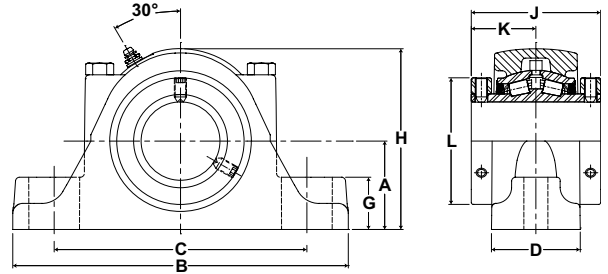




- Rolling Elements:** Tapered Roller
- Housing:** Cast Steel Two Bolt Pillow Block
- Self Alignment:** +/- 3 Degrees
- Lock:** Setscrew, Double Collar
- Seal:** Felt
- Optional Seal:** Single Lip Contact
- Temperature:** -20°F to 220°F



SPB Series Two-Bolt Base Pillow Blocks - Cast Steel Housing

Bore Diameter		Part No.	Bearing Insert No.	Basic Dynamic Rating lb/N	Dimensions inch / mm										Unit Wt. lb/kg	
inch	mm				A	B	C		D	G	H	J	K	L		Bolt Size
						Min.	Max.									
1 1/2	40	SPB-108-2	RCI-108	6140 27312	2 1/8 54.0	7 3/4 196.9	5 9/16 141.3	6 7/16 163.5	2 5/16 58.7	1 1/4 31.8	4 3/8 111.1	3 3/8 85.7	1 11/16 42.9	2 7/8 73.0	1/2	12.0 5.44
		SPB-40MM-2	RCI-40MM													
		SPB-110-2	RCI-110													
1 11/16		SPB-111-2	RCI-111													
1 3/4	45	SPB-112-2	RCI-112	8070 35897	2 1/4 57.2	8 7/8 225.4	6 5/16 160.3	7 3/16 182.6	2 7/16 61.9	1 1/4 31.8	4 5/8 117.5	3 1/2 88.9	1 3/4 44.5	3 1/4 82.6	5/8	14.5 6.58
		SPB-45MM-2	RCI-45MM													
		SPB-115-2	RCI-115													
1 15/16		SPB-50MM-2	RCI-50MM													
2		SPB-200-2	RCI-200													
2 3/16	55	SPB-55MM-2	RCI-55MM	8570 38121	2 1/2 63.5	9 5/8 244.5	6 11/16 169.9	7 15/16 201.6	2 9/16 65.1	1 7/16 36.5	5 1/8 130.2	3 3/4 95.3	1 7/8 47.6	3 5/8 92.1	5/8	17.3 7.85
		SPB-203-2	RCI-203													
2 1/4	60	SPB-204-2	RCI-204	9030 40167	2 3/4 69.9	10 3/8 263.5	6 15/16 176.2	8 11/16 220.7	2 3/4 69.9	1 5/8 41.3	5 5/8 142.9	4 101.6	2 50.8	3 15/16 100.0	5/8	22.8 10.34
		SPB-60MM-2	RCI-60MM													
		SPB-207-2	RCI-207													
		SPB-208-2	RCI-208													
2 1/2		SPB-65MM-2	RCI-65MM													
2 11/16	70	SPB-211-2	RCI-211	9630 42836	3 1/8 79.4	11 3/4 298.5	8 1/16 204.8	9 11/16 246.1	3 76.2	1 3/4 44.5	6 3/8 161.9	4 1/2 114.3	2 1/4 57.2	4 23/32 119.9	3/4	32.2 14.61
		SPB-212-2	RCI-212													
		SPB-70MM-2	RCI-70MM													
		SPB-215-2	RCI-215													
		SPB-75MM-2	RCI-75MM													
2 15/16		SPB-300-2	RCI-300													
3 3/16	80	SPB-80MM-2	RCI-80MM	15320 68147	3 3/4 95.3	13 3/4 349.3	10 1/8 257.2	11 1/4 285.8	4 1/8 104.8	2 1/16 52.4	7 3/4 196.9	5 127.0	2 1/2 63.5	5 7/16 138.1	7/8	65.6 29.76
		SPB-303-2	RCI-303													
		SPB-304-2	RCI-304													
		SPB-85MM-2	RCI-85MM													
		SPB-307-2	RCI-307													
		SPB-308-2	RCI-308													
3 1/4		SPB-90MM-2	RCI-90MM													
3 7/16		SPB-95MM-2	RCI-95MM													
3 1/2																

Metric dimensions for reference only.

Not all parts are available from stock. Please contact customer service for availability (800) 626-2120.

For more information on bearing capabilities outside of our standard offering, please contact Application Engineering (800) 626-2093.