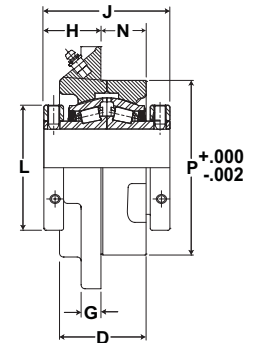
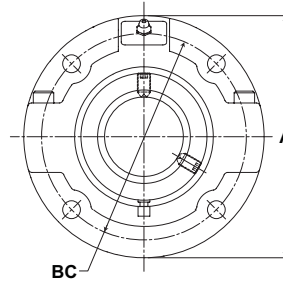




- Rolling Elements:** Tapered Roller
- Housing:** Cast Iron Piloted Flange
- Self Alignment:** +/- 3 Degrees
- Lock:** Setscrew, Double Collar
- Seal:** Felt
- Optional Seal:** Single Lip Contact
- Temperature:** -20°F to 220°F



RFP Series Piloted Flange Cartridge Units

Bore Diameter		Part No.	Bearing Insert No.	Basic Dynamic Rating lb/N	Dimensions inch / mm									Unit Wt. lb/kg	
					A	B.C.	D	G	H	J	L	N	P		Bolt Size
1 3/16		RFP-103	RCI-103	2975	5	4 1/8	1 3/4	7/16	1 5/16	2 3/4	2 1/4	7/8	3 3/8	3/8	5.5
1 1/4		RFP-104	RCI-104	13233	127.0	104.8	44.5	11.1	33.3	69.9	57.2		85.7		2.49
1 3/8	35	RFP-106	RCI-106	4760	5 1/4	4 3/8	2	1/2	1 1/2	3	2 5/8	15/16	3 5/8	3/8	6.8
1 7/16		RFP-35MM	RCI-35MM	21174	133.4	111.1	50.8	12.7	38.1	76.2	66.7		92.1		3.08
1 1/2	40	RFP-108	RCI-108	6140	6 1/8	5 1/8	2 1/4	1/2	1 9/16	3 3/8	2 7/8	1 1/8	4 1/4	7/16	10.1
1 5/8		RFP-40MM	RCI-40MM	27312	155.6	130.2	57.2	12.7	39.7	85.7	73.0		108.0		4.58
1 11/16		RFP-110	RCI-110												
		RFP-111	RCI-111												
1 3/4	45	RFP-112	RCI-112	8070	6 3/8	5 3/8	2 5/16	9/16	1 9/16	3 1/2	3 1/4	1 1/4	4 1/2	7/16	11.6
1 15/16		RFP-45MM	RCI-45MM	35897	161.9	136.5	58.7	14.3	39.7	88.9	82.6		114.3		5.26
	50	RFP-115	RCI-115												
		RFP-50MM	RCI-50MM												
		RFP-200	RCI-200												
2 3/16	55	RFP-55MM	RCI-55MM	8570	7 1/8	6	2 1/2	9/16	1 11/16	3 3/4	3 5/8	1 15/16	5	1/2	14.5
		RFP-203	RCI-203	38121	181.0	152.4	63.5	14.3	42.9	95.3	92.1	49.2	127.0		6.58
2 1/4	60	RFP-204	RCI-204	9030	7 5/8	6 1/2	2 3/4	5/8	1 13/16	4	3 15/16	1 7/16	5 1/2	1/2	19
2 7/16		RFP-60MM	RCI-60MM	40167	193.7	165.1	69.9	15.9	46.0	101.6	100.0	36.5	139.7		8.62
2 1/2	65	RFP-207	RCI-207												
		RFP-208	RCI-208												
		RFP-65MM	RCI-65MM												
2 11/16	70	RFP-211	RCI-211	9630	8 3/4	7 1/2	2 7/8	3/4	2	4 1/2	4 23/32	1 9/16	6 3/8	5/8	26.7
2 3/4		RFP-212	RCI-212	42836	222.3	190.5	73.0	19.1	50.8	114.3	119.9	39.7	161.9		12.11
2 15/16	75	RFP-70MM	RCI-70MM												
		RFP-215	RCI-215												
		RFP-75MM	RCI-75MM												
		RFP-300	RCI-300												
3 3/16	80	RFP-80MM	RCI-80MM												
3 1/4		RFP-303	RCI-303												
		RFP-304	RCI-304												
3 7/16	85	RFP-85MM	RCI-85MM	15320	10 1/4	8 5/8	3 3/8	7/8	2 7/16	5	5 7/16	1 5/8	7 3/8	3/4	42.6
3 1/2		RFP-307	RCI-307	68147	260.4	219.1	85.7	22.2	61.9	127.0	138.1	41.3	187.3		19.32
	90	RFP-308	RCI-308												
		RFP-90MM	RCI-90MM												
		RFP-95MM	RCI-95MM												
3 15/16	100	RFP-315	RCI-315	20980	10 7/8	9 3/8	4 3/8	15/16	2 11/16	6 1/4	5 15/16	2 7/16	8 1/8	3/4	55.2
4		RFP-100MM	RCI-100MM	93324	276.2	238.1	111.1	23.8	68.3	158.8	150.8	61.9	206.4		25.04
	105	RFP-400	RCI-400												
		RFP-105MM	RCI-105MM												
4 7/16	110	RFP-110MM	RCI-110MM	25750	13 1/2	11 3/4	4 5/8	1	3 1/32	6 3/4	6 13/32	2 3/8	10 1/4	3/4	91
4 1/2		RFP-407	RCI-407	114542	342.9	298.5	117.5	25.4	77.0	171.5	162.7	60.3	260.4		41.28
	115	RFP-408	RCI-408												
		RFP-115MM	RCI-115MM												
4 15/16	120	RFP-120MM	RCI-120MM	35520	14 3/4	12 3/4	5 3/8	1 1/4	2 31/32	7 1/4	7 13/32	2 7/8	11	7/8	115
5		RFP-125MM	RCI-125MM	158001	374.7	323.9	136.5	31.8	75.4	184.2	188.1	73.0	279.4		52.16
		RFP-415	RCI-415												
		RFP-500	RCI-500												

Metric dimensions for reference only.