

# ESW/PESW



WEG offers non-reversing and non-combination magnetic starters up to 75HP at 460Vac (105A). Featuring components that meet IEC design standards and UL horsepower ratings, incorporating WEG contactors and overload relays, the magnetic starters are ideal to protect and operate motors, ensuring smooth operation year-after year.

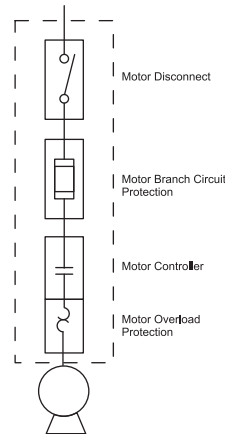
Three series are available:

- Metallic Type 1 – ESW Series
- Non-Metallic Type 4X – PESW Series
- Metallic Type NEMA 7/9 - ESWX Series

WEG ESW and PESW starters are pre-wired from the factory and recommended for all single and three phase applications where magnetic starters can be applied.

### Standard Features

- High horsepower ratings in four compact sizes
- Fast acceleration and high initial torque
- Bimetallic Overload Relays – class 10
- Adjustable trip current
- Ambient temperature compensated
- Phase-loss sensitivity protection
- Selectable Manual or Automatic RESET
- Electrically isolated NO-NC auxiliary contacts
- Easy to install and setup



Types A through D combination starters

# Enclosed Motor Controls



Enclosed Starters - PESW

PESW Series - Non-combination Across the line starter  
Three-Phase Enclosure Type - 4X



Max. UL Horsepower				Box	Setting Range	Coil Voltage	RESET only <sup>5</sup>		START/STOP + RESET		Multiplier
200V	230V	460V	575V				Catalog Number	List Price	Catalog Number	List Price	
-	1/3	1/2	-	04	0.8 - 1.2	120	PESW-9V18EX-R23	\$157	PESW-9V18AX-R23	\$210	
						208-240	PESW-9V24EX-R23		PESW-9V24AX-R23		
						480	PESW-9V47EX-R23		PESW-9V47AX-R23		
-	-	1	1	04	1.2 - 1.8	120	PESW-9V18EX-R24	\$157	PESW-9V18AX-R24	\$210	
						208-240	PESW-9V24EX-R24		PESW-9V24AX-R24		
						480	PESW-9V47EX-R24		PESW-9V47AX-R24		
1/2	3/4	1-1/2	2	04	1.8 - 2.8	120	PESW-9V18EX-R25	\$157	PESW-9V18AX-R25	\$210	
						208-240	PESW-9V24EX-R25		PESW-9V24AX-R25		
						480	PESW-9V47EX-R25		PESW-9V47AX-R25		
1	1	2	3	04	2.8 - 4.0	120	PESW-9V18EX-R26	\$157	PESW-9V18AX-R26	\$210	
						208-240	PESW-9V24EX-R26		PESW-9V24AX-R26		
						480	PESW-9V47EX-R26		PESW-9V47AX-R26		
1-1/2	1-1/2	3	5	04	4.0 - 6.3	120	PESW-9V18EX-R27	\$157	PESW-9V18AX-R27	\$210	
						208-240	PESW-9V24EX-R27		PESW-9V24AX-R27		
						480	PESW-9V47EX-R27		PESW-9V47AX-R27		
2	2	5	-	04	5.6 - 8.0	120	PESW-9V18EX-R28	\$157	PESW-9V18AX-R28	\$210	
						208-240	PESW-9V24EX-R28		PESW-9V24AX-R28		
						480	PESW-9V47EX-R28		PESW-9V47AX-R28		
3	3	-	7-1/2	04	7.0 - 10	120	PESW-9V18EX-R29	\$157	PESW-9V18AX-R29	\$210	
						208-240	PESW-9V24EX-R29		PESW-9V24AX-R29		
						480	PESW-9V47EX-R29				
-	-	7-1/2	10	04	8.0 - 12.5	120	PESW-12V18EX-R30	\$174	PESW-12V18AX-R30	\$227	
						208-240	PESW-12V24EX-R30		PESW-12V24AX-R30		
						480	PESW-12V47EX-R30				
5	5	10	15	04	11 - 17	120	PESW-18V18EX-R32	\$188	PESW-18V18AX-R32	\$241	
						208-240	PESW-18V24EX-R32		PESW-18V24AX-R32		
						480	PESW-18V47EX-R32		PESW-18V47AX-R32		
7-1/2	7-1/2	15	-	04	15 - 23	120	PESW-25V18EX-R33	\$223	PESW-25V18AX-R33	\$276	
						208-240	PESW-25V24EX-R33		PESW-25V24AX-R33		
						480	PESW-25V47EX-R33		PESW-25V47AX-R33		
10	10	20	25	06	22 - 32	120	PESW-32V18EX-R34	\$262	PESW-32V18AX-R34	\$298	
						208-240	PESW-32V24EX-R34		PESW-32V24AX-R34		
						480	PESW-32V47EX-R34		PESW-32V47AX-R34		
10	15	30	-	06	25 - 40	120	PESW-40V18EX-R35	\$321	PESW-40V18AX-R35	\$345	
						208-240	PESW-40V24EX-R35		PESW-40V24AX-R35		
						480	PESW-40V47EX-R35		PESW-40V47AX-R35		
15	15	30	40	08	32 - 50	120	PESW-50V18EX-R38	\$564	PESW-50V18AX-R38	\$579	
						208-240	PESW-50V24EX-R38		PESW-50V24AX-R38		
						480	PESW-50V47EX-R38		PESW-50V47AX-R38		
20	20	40	50	08	40 - 57	120	PESW-65V18EX-R39	\$589	PESW-65V18AX-R39	\$604	
						208-240	PESW-65V24EX-R39		PESW-65V24AX-R39		
						480	PESW-65V47EX-R39		PESW-65V47AX-R39		
-	25	50	60	08	57 - 70	120	PESW-80V18EX-R41	\$635	PESW-80V18AX-R41	\$650	
						208-240	PESW-80V24EX-R41		PESW-80V24AX-R41		
						480	PESW-80V47EX-R41		PESW-80V47AX-R41		
25	30	60	75	10	63 - 80	120	PESW-95V18EX-R43	\$1,085	PESW-95V18AX-R43	\$1,100	
						208-240	PESW-95V24EX-R43		PESW-95V24AX-R43		
						480	PESW-95V47EX-R43		PESW-95V47AX-R43		
30	-	75	-	10	75 - 97	120	PESW-105V18EX-R44	\$1,184	PESW-105V18AX-R44	\$1,199	
						208-240	PESW-105V24EX-R44		PESW-105V24AX-R44		
						480	PESW-105V47EX-R44		PESW-105V47AX-R44		
-	40	-	-	10	90 - 112	120	PESW-105V18EX-R45	\$1,184	PESW-105V18AX-R45	\$1,199	
						208-240	PESW-105V24EX-R45		PESW-105V24AX-R45		
						480					

Z3

Enclosed Motor Controls

Notes:  
 1) OLR must be set @115% of FLA  
 2) 3-phase starters with 120V coil are wired for separate control  
 3) 3-phase starters can be wired for single-phase applications (see diagram)



### PESW Series - Non-combination Across the line starter

#### Single Phase- Enclosure Type-4X

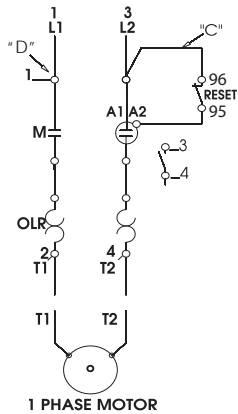
Max. UL Horsepower		Box	Setting Range	Coil Voltage	RESET only <sup>4</sup>		START/STOP + RESET		Multiplier
115V	230V				Catalog Number	List Price	Catalog Number	List Price	
-	1/2	04	2.8 - 4.0	208-240	<a href="#">PESWS-9V24EX-RM26</a>	\$140	<a href="#">PESWS-9V24AX-RM26</a>	\$155	Z3
-	3/4	04	4.0 - 6.3	208-240	<a href="#">PESWS-9V24EX-RM27</a>	\$140	<a href="#">PESWS-9V24AX-RM27</a>	\$155	
1/3	1	04	5.6 - 8.0	120	<a href="#">PESWS-9V18EX-RM28</a>	\$140	<a href="#">PESWS-9V18AX-RM28</a>	\$155	
				208-240	<a href="#">PESWS-9V24EX-RM28</a>		<a href="#">PESWS-9V24AX-RM28</a>		
1/2	-	04	7.0 - 10	120	<a href="#">PESWS-9V18EX-RM29</a>	\$140	<a href="#">PESWS-9V18AX-RM29</a>	\$155	
-	1-1/2	04	8.0 - 12.5	208-240	<a href="#">PESWS-9V24EX-RM30</a>	\$140	<a href="#">PESWS-9V24AX-RM30</a>	\$155	
3/4	2	04	10 - 15	120	<a href="#">PESWS-12V18EX-RM31</a>	\$161	<a href="#">PESWS-12V18AX-RM31</a>	\$170	
				208-240	<a href="#">PESWS-12V24EX-RM31</a>		<a href="#">PESWS-12V24AX-RM31</a>		
1	3	04	11 - 17	120	<a href="#">PESWS-18V18EX-RM32</a>	\$170	<a href="#">PESWS-18V18AX-RM32</a>	\$182	
				208-240	<a href="#">PESWS-18V24EX-RM32</a>		<a href="#">PESWS-18V24AX-RM32</a>		
1-1/2	5	04	15 - 23	120	<a href="#">PESWS-25V18EX-RM33</a>	\$180	<a href="#">PESWS-25V18AX-RM33</a>	\$195	
				208-240	<a href="#">PESWS-25V24EX-RM33</a>		<a href="#">PESWS-25V24AX-RM33</a>		
2	5	04	22 - 32	120	<a href="#">PESWS-25V18EX-RM34</a>	\$180	<a href="#">PESWS-25V18AX-RM34</a>	\$195	
				208-240	<a href="#">PESWS-25V24EX-RM34</a>		<a href="#">PESWS-25V24AX-RM34</a>		
3	-	06	25 - 40	120	<a href="#">PESWS-40V18EX-RM35</a>	\$274	<a href="#">PESWS-40V18AX-RM35</a>	\$300	
-	7-1/2	08	25 - 40	208-240	<a href="#">PESWS-50V24EX-RM36</a>	\$430	<a href="#">PESWS-50V24AX-RM36</a>	\$440	
-	7-1/2	08	32 - 50	208-240	<a href="#">PESWS-50V24EX-RM38</a>	\$430	<a href="#">PESWS-50V24AX-RM38</a>	\$440	
-	10	08	32 - 50	208-240	<a href="#">PESWS-65V24EX-RM38</a>	\$460	<a href="#">PESWS-65V24AX-RM38</a>	\$480	

**Notes:**

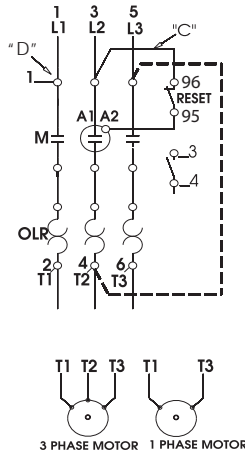
- 1) OLR must be set at 115% of motor FLA
- 2) Single-phase starters are assembled with special 2-pole contactors and 2 pole OL relays
- 3) Starters are pre-wired for common control, ie coil voltage matched power voltage
- 4) Items not stocked. Availability under request.

## Enclosed Starters - PESW WIRING DIAGRAM

### Single-phase Starter



### Three-phase Starter

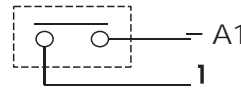


### Separate Control

FOR SEPARATE CONTROL, REMOVE WIRES "C" AND "D" IF SUPPLIED AND CONNECT SEPARATE CONTROL LINES TO TERMINAL N° 96 ON THE OVERLOAD RELAY AND TO TERMINAL N° 3 ON THE AUX. CONTACT BLOCK (FOR 3 WIRE CONTROL) OR TO THE CONTACTOR COIL N° A1 (FOR 2 WIRE CONTROL).

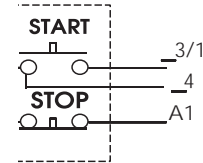
### Pilot Devices

#### 2 Wire Control



NOT FOR USE WITH AUTO RESET OL RELAYS.

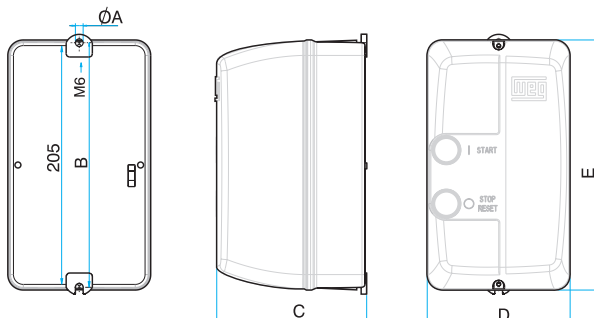
#### 3 Wire Control



## DIMENSIONS

SIZE 04 mm(in)	SIZE 06 mm (in)	SIZE 08 mm (in)	SIZE 10 mm (in)
øA = 4.5 (0.2)	øA = 6.5 (0.3)	øA = 6.0 (0.2)	øA = 7.0 (0.3)
B = 180 (7.1)	B = 205 (8.1)	B = 275 (10.8)	B = 355 (14.0)
C = 111 (4.4)	C = 126 (5.0)	C = 143 (5.6)	C = 167 (6.6)
D = 105 (4.1)	D = 120 (4.7)	D = 180 (7.1)	D = 250 (9.9)
E = 185 (7.3)	E = 210 (8.3)	E = 280 (11.0)	E = 360 (14.2)

Provision for cable gland fitting	Standard		
	Top	Bottom	Back
Size 04	2 x 1/2"	2 x 1/2"	ø18mm (0.7in)
Size 06	2 x 1/2" and 3/4"	2 x 1/2" and 3/4"	ø22mm (0.9in)
Size 08	2 x 3/4" and 1"	2 x 3/4" and 1"	-
Size 10	2 x 3/4" and 1"	2 x 3/4" and 1"	-
	1 x 1" and 1 1/4"	1 x 1" and 1 1/4"	-



For wall mounting on starters size 08 and 10, four screws with the following characteristics should be used:

- Pan, dome or rounded shaped head;
- Starter size 08:
  - \* Screws size 1/4 (or M6 – ISO Standard);
  - \* Dimensions: diameter thread shall be maximum 1/4 in and diameter head shall be maximum 15/64 in.
- Starter size 10:
  - \* Screws size 1/2 (or M5 – ISO Standard);
  - \* Dimensions: diameter thread shall be maximum 0.236 in and diameter head shall be maximum 0.394 in.