

# Enclosed Starters



PESW

**PESW Series - Non-combination Across the line starter**  
**Three-Phase Enclosure Type - 4X**



	Max. UL Horsepower				Box	Setting Range	Coil Voltage	RESET only		START/STOP + RESET		Multiplier
	200V	230V	460V	575V				Catalog Number	List Price	Catalog Number	List Price	
Disconnect Switches	-	1/3	1/2	-	04	0.8 - 1.2	120	PESW-B9D15EX-R57	\$157	PESW-B9D15AX-R57	\$210	Z3
							208-240	PESW-B9V24EX-R57		PESW-B9V24AX-R57		
							480	PESW-B9D39EX-R57		PESW-B9D39AX-R57		
Motor Protectors	-	-	1	1	04	1.2 - 1.8	120	PESW-B9D15EX-R58	\$157	PESW-B9D15AX-R58	\$210	
							208-240	PESW-B9V24EX-R58		PESW-B9V24AX-R58		
							480	PESW-B9D39EX-R58		PESW-B9D39AX-R58		
Contactors	1/2	3/4	1-1/2	2	04	1.8 - 2.8	120	PESW-B9D15EX-R59	\$157	PESW-B9V18AX-R59	\$210	
							208-240	PESW-B9V24EX-R59		PESW-B9V24AX-R59		
	1	1	2	3	04	2.8 - 4.0	120	PESW-B9D15EX-R60	\$157	PESW-B9D15AX-R60	\$210	
							208-240	PESW-B9V24EX-R60		PESW-B9V24AX-R60		
							480	PESW-B9D39EX-R60		PESW-B9D39AX-R60		
Overloads	1-1/2	1-1/2	3	5	04	4.0 - 6.3	120	PESW-B9D15EX-R27	\$157	PESW-B9D15AX-R61	\$210	
							208-240	PESW-B9V24EX-R61		PESW-B9V24AX-R61		
							480	PESW-B9D39EX-R61		PESW-B9D39AX-R61		
Enclosed Starters	2	2	5	-	04	5.6 - 8.0	120	PESW-B9D15EX-R62	\$157	PESW-B9D15AX-R62	\$210	
							208-240	PESW-B9V24EX-R62		PESW-B9V24AX-R62		
							480	PESW-B9D39EX-R62		PESW-B9D39AX-R62		
Relays	3	3	-	7-1/2	04	7.0 - 10	120	PESW-B9D15EX-R63	\$157	PESW-B9D15AX-R63	\$210	
							208-240	PESW-B9V24EX-R63		PESW-B9V24AX-R63		
							480	PESW-B9D39EX-R63		PESW-B9D39AX-R63		
	-	-	7-1/2	10	04	8.0 - 12.5	120	PESW-B12D15EX-R64	\$174	PESW-B12D15AX-R64	\$227	
							208-240	PESW-B12V24EX-R64		PESW-B12V24AX-R64		
							480	PESW-B12D39EX-R64		PESW-B12D39AX-R64		
Pushbuttons and Pilot Lights	5	5	10	15	04	11 - 17	120	PESW-B18D15EX-R66	\$188	PESW-B18D15AX-R66	\$241	
							208-240	PESW-B18V24EX-R66		PESW-B18V24AX-R66		
							480	PESW-B18D39EX-R66		PESW-B18D39AX-R66		
Terminal Blocks	7-1/2	7-1/2	15	-	04	15 - 23	120	PESW-B25D15EX-R67	\$223	PESW-B25D15AX-R67	\$276	
							208-240	PESW-B25V24EX-R67		PESW-B25V24AX-R67		
							480	PESW-B25D39EX-R67		PESW-B25D39AX-R67		
	10	10	20	25	06	22 - 32	120	PESW-B32D15EX-R68	\$262	PESW-B32D15AX-R68	\$298	
							208-240	PESW-B32V24EX-R68		PESW-B32V24AX-R68		
							480	PESW-B38D39EX-R68		PESW-B32D39AX-R68		
Power Factor Correction	10	10	25	25	06	25-40	120	PESW-B38D15EX-R69	\$321	PESW-B38D15AX-R69	\$345	
							208-240	PESW-B38V24EX-R69		PESW-B38V24AX-R69		
							480	PESW-B38D39EXR69		PESW-B38D39AX-R69		

continued on next page

Appendix A  
Appendix B

**PESW Series - Non-combination Across the line starter - continued**  
**Three-Phase Enclosure Type - 4X**

Max. UL Horsepower				Box	Setting Range	Coil Voltage	RESET only		START/STOP + RESET		Multiplier
200V	230V	460V	575V				Catalog Number	List Price	Catalog Number	List Price	
10	15	30	-	06	25 - 40	120	PESW-40V18EX-R35	\$321	PESW-40V18AX-R35	\$345	Z3
						208-240	PESW-40V24EX-R35		PESW-40V24AX-R35		
						480	PESW-40V47EX-R35		PESW-40V47AX-R35		
15	15	30	40	08	32 - 50	120	PESW-50V18EX-R38	\$564	PESW-50V18AX-R38	\$579	
						208-240	PESW-50V24EX-R38		PESW-50V24AX-R38		
						480	PESW-50V47EX-R38		PESW-50V47AX-R38		
20	20	40	50	08	40 - 57	120	PESW-65V18EX-R39	\$589	PESW-65V18AX-R39	\$604	
						208-240	PESW-65V24EX-R39		PESW-65V24AX-R39		
						480	PESW-65V47EX-R39		PESW-65V47AX-R39		
-	25	50	60	08	57 - 70	120	PESW-80V18EX-R41	\$635	PESW-80V18AX-R41	\$650	
						208-240	PESW-80V24EX-R41		PESW-80V24AX-R41		
						480	PESW-80V47EX-R41		PESW-80V47AX-R41		
25	30	60	75	10	63 - 80	120	PESW-95V18EX-R43	\$1,085	PESW-95V18AX-R43	\$1,100	
						208-240	PESW-95V24EX-R43		PESW-95V24AX-R43		
						480	PESW-95V47EX-R43		PESW-95V47AX-R43		
30	-	75	-	10	75 - 97	120	PESW-105V18EX-R44	\$1,184	PESW-105V18AX-R44	\$1,199	
						480	PESW-105V47EX-R44		PESW-105V47AX-R44		
-	40	-	-	10	90 - 112	120	PESW-105V18EX-R45	\$1,184	PESW-105V18AX-R45	\$1,199	
						208-240	PESW-105V24EX-R45		PESW-105V24AX-R45		

Notes:  
 1) OLR must be set @115% of FLA  
 2) 3-phase starters with 120V coil are wired for separate control  
 3) 3-phase starters can be wired for single-phase applications (see diagram)

- General Information
- Circuit Protection
- Disconnect Switches
- Motor Protectors
- Contactors
- Overloads
- Enclosed Starters
- Relays
- Pushbuttons and Pilot Lights
- Terminal Blocks
- Power Factor Correction
- Appendix A
- Appendix B

## PESW

**PESW Series - Non-combination Across the line starter**  
**Single Phase- Enclosure Type-4X**




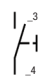

Max. UL Horsepower	Box	Setting Range	Coil Voltage	RESET only		START/STOP + RESET		Multiplier	
				Catalog Number	List Price	Catalog Number	List Price		
115V	230V								
-	1/2	04	2.8 - 4.0	120	PESWS-B9D15EX-RM60	\$140	PESWS-B9D15AX-RM60	\$155	Z3
			208-240	PESWS-B9V24EX-RM60	PESWS-B9V24AX-RM60				
-	3/4	04	4.0 - 6.3	120	PESWS-B9D15EX-RM61	\$140	PESWS-B9D15AX-RM61	\$155	
			208-240	PESWS-B9V24EX-RM61	PESWS-B9V24AX-RM61				
1/3	1	04	5.6 - 8.0	120	PESWS-B9D15EX-RM62	\$140	PESWS-B9D15AX-RM62	\$155	
			208-240	PESWS-B9V24EX-RM62	PESWS-B9V24AX-RM62				
1/2	-	04	7.0 - 10	120	PESWS-B9D15EX-RM63	\$140	PESWS-B9D15AX-RM63	\$155	
			208-240	PESWS-B9V24EX-RM63	PESWS-B9V24AX-RM63				
-	1-1/2	04	8.0 - 12.5	120	PESWS-B9D15EX-RM64	\$140	PESWS-B9D15AX-RM64	\$155	
			208-240	PESWS-B9V24EX-RM64	PESWS-B9V24AX-RM64				
3/4	2	04	10 - 15	120	PESWS-B12D15EX-RM65	\$161	PESWS-B12D15AX-RM65	\$170	
			208-240	PESWS-B12V24EX-RM65	PESWS-B12V24AX-RM65				
1	3	04	11 - 17	120	PESWS-B18D15EX-RM66	\$170	PESWS-B18D15AX-RM66	\$182	
			208-240	PESWS-B18V24EX-RM66	PESWS-B18V24AX-RM66				
1-1/2	5	04	15 - 23	120	PESWS-B25D15EX-RM67	\$180	PESWS-B25D15AX-RM67	\$195	
			208-240	PESWS-B25V24EX-RM67	PESWS-B25V24AX-RM67				
2	5	04	22 - 32	120	PESWS-B32D15EX-RM68	\$180	PESWS-B32D15AX-RM68	\$195	
			208-240	PESWS-B32V24EX-RM68	PESWS-B32V24AX-RM68				
3	7-1/2	04	32-40	120	PESWS-B38D15EX-RM69	\$274	PESWS-B38D15AX-RM69	\$300	
			208-240	PESWS-B38V24EX-RM69	PESWS-B38V24AX-RM69				
3	7-1/2	06	25 - 40	120	PESWS-40V18EX-RM35	\$274	PESWS-40V18AX-RM35	\$300	
			208-240	PESWS-40V24EX-RM35	PESWS-40V24AX-RM35				
3	10	08	32 - 50	120	PESWS-50V18EX-RM38	\$430	PESWS-50V18AX-RM38	\$440	
			208-240	PESWS-50V24EX-RM38	PESWS-50V24AX-RM38				

Note: OLR must be set at 115% of motor FLA

## Accessories - Mounting in Control Stations

### Contact Block<sup>2)</sup>

Replacement Base Mount Contact Blocks for PESWS(B) 9-38

Description	Contacts	Diagram	Standard packing	Catalog Number	Price	Multiplier
 Single contact blocks to mounting in control stations or DIN rail 35 mm 0.015 kg <sup>3)</sup>	1NO		1 piece	BC10B-CSW	\$5.00	Z5
	1NC		1 piece	BC01B-CSW	\$5.00	

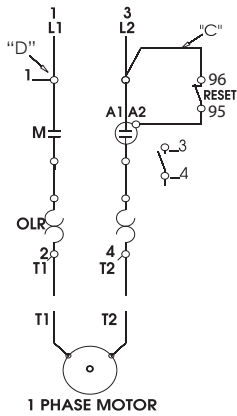
Notes: 1) Compatible with all single of the CSW line pushbuttons, selector switches and pilot lights. To avoid interferences and ensure the performance when use a mushroom pushbutton beside another pushbutton, WEG recommend maintaining an empty hole between the pushbuttons. To close the hole use the ATR accessory;

2) Blocks specific for mounting in base or PBW plastic control stations or DIN rail 35mm;

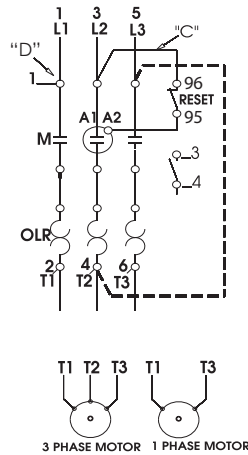
3) Unitary weight.

## WIRING DIAGRAM

### Single-phase Starter



### Three-phase Starter

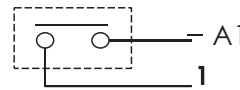


### Separate Control

FOR SEPARATE CONTROL, REMOVE WIRES "C" AND "D" IF SUPPLIED AND CONNECT SEPARATE CONTROL LINES TO TERMINAL N° 96 ON THE OVERLOAD RELAY AND TO TERMINAL N° \_3 ON THE AUX. CONTACT BLOCK (FOR 3 WIRE CONTROL) OR TO THE CONTACTOR COIL N° A1 (FOR 2 WIRE CONTROL).

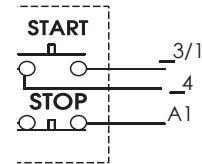
### Pilot Devices

#### 2 Wire Control



NOT FOR USE WITH AUTO RESET OL RELAYS.

#### 3 Wire Control

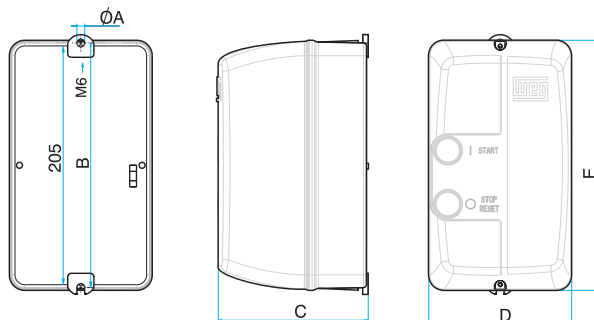


Conversion to single-phase, add jumper wire from L3 to T2 (follow dotted line connection above)

## DIMENSIONS

SIZE 04 mm(in)	SIZE 06 mm (in)	SIZE 08 mm (in)	SIZE 10 mm (in)
øA = 5.5 (0.2165)	øA = 6.5 (0.3)	øA = 6.0 (0.2)	øA = 7.0 (0.3)
B = 219.0 (8.622)	B = 205 (8.1)	B = 275 (10.8)	B = 355 (14.0)
C = 112 (4.4331)	C = 126 (5.0)	C = 143 (5.6)	C = 167 (6.6)
D = 114.0 (4.4882)	D = 120 (4.7)	D = 180 (7.1)	D = 250 (9.9)
E = 229.5 ( 9.0354)	E = 210 (8.3)	E = 280 (11.0)	E = 360 (14.2)

Provision for cable gland fitting	Standard		
	Top	Bottom	Back
Size 04	2 x 1/2" - 3/4" PG13.5	2 x 1/2" - 3/4" PG13.5	4 X 1/2" PG13.5
Size 06		2 x 1/2" and 3/4"	ø22mm (0.9in)
Size 08	2 x 3/4" and 1"	2 x 3/4" and 1"	-
Size 10	2 x 3/4" and 1"	2 x 3/4" and 1"	-
	1 x 1" and 1 1/4"	1 x 1" and 1 1/4"	-



For wall mounting on starters size 08 and 10, four screws with the following characteristics should be used:

- Pan, dome or rounded shaped head;
- Starter size 08:
  - Screws size 1/4 (or M6 – ISO Standard);
  - Dimensions: diameter thread shall be maximum 1/4 in and diameter head shall be maximum 15/64 in.
- Starter size 10:
  - Screws size 1/2 (or M5 – ISO Standard);
  - Dimensions: diameter thread shall be maximum 0.236 in and diameter head shall be maximum 0.394 in.